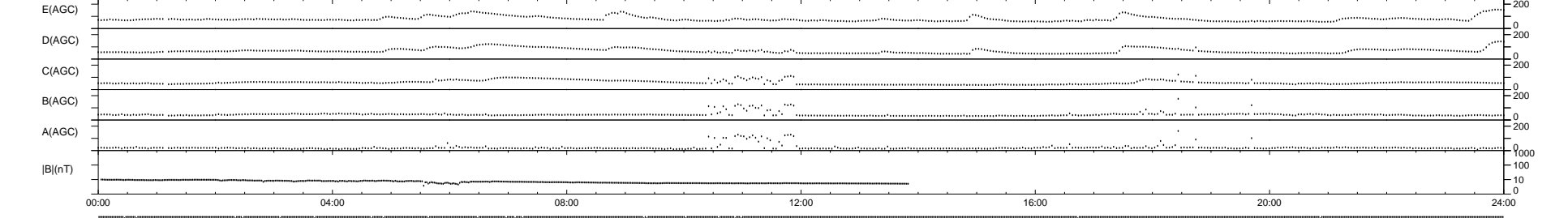
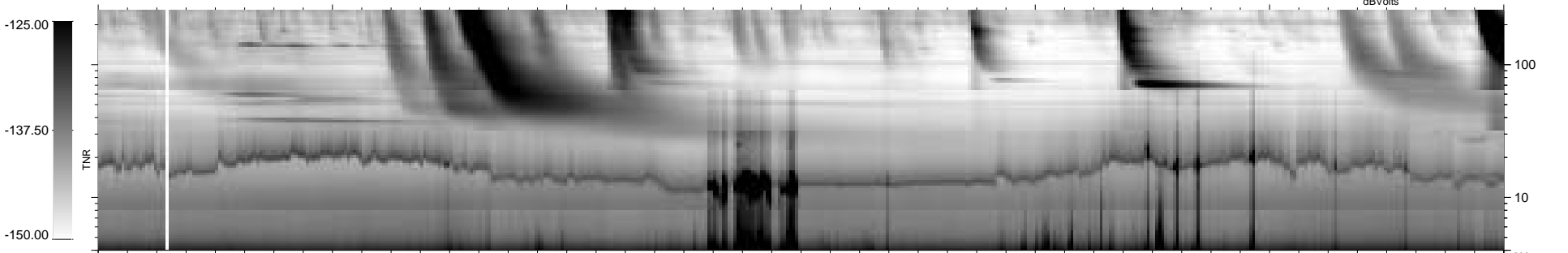
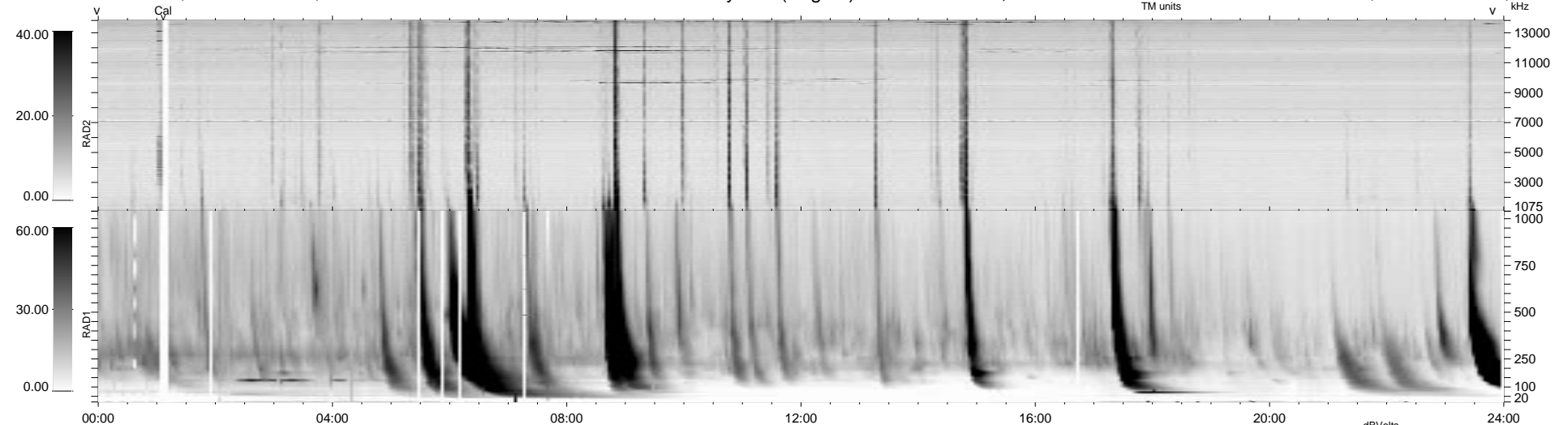


21 bad + 918 good MF/939MF projected (97%) - 0 missing MFs
 Avg interval = 180 secs
 Re = -207.32 (206.20, -21.48, 1.68 GSE)

1.7d VMS-SunOS LZ version = v02
 DAILY Mon Sep 15, 2008
 Re = 206.60 (205.52, -21.00, 2.16 GSE)

WIND/WAVES Summary Plot (Page 1) for 07-JUL-1999, DOY = 188



RAD2 Antenna Ey
 Mode LIN(1)
 SUM/SEP SEP
 Toggle OFF
 RAD1 Antenna Ex
 Mode LIS(2,3)
 SUM/SEP SUM
 Toggle OFF
 TNR Antenna ExEy
 Mode A-32
 Sweep ABCDE