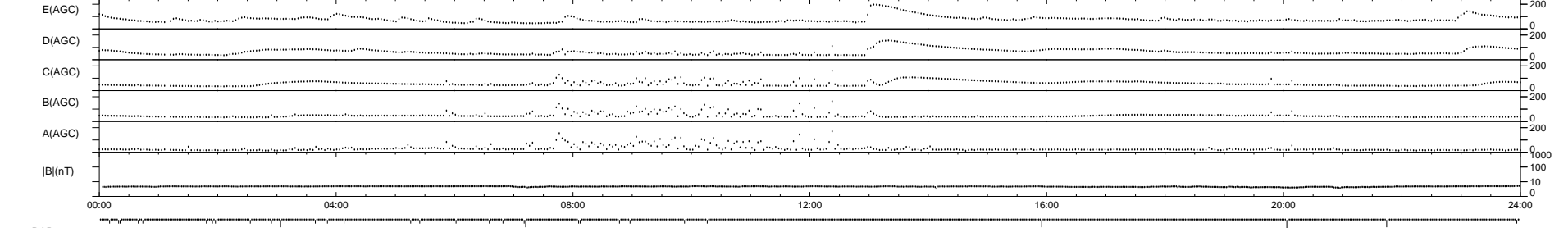
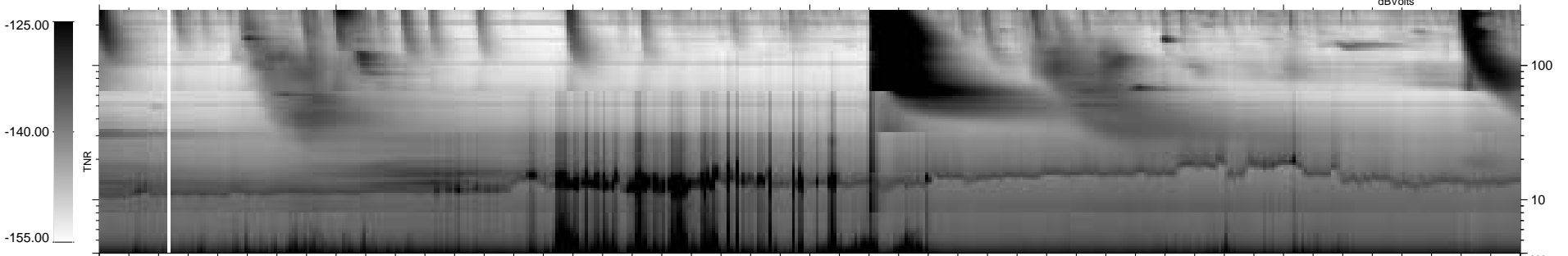
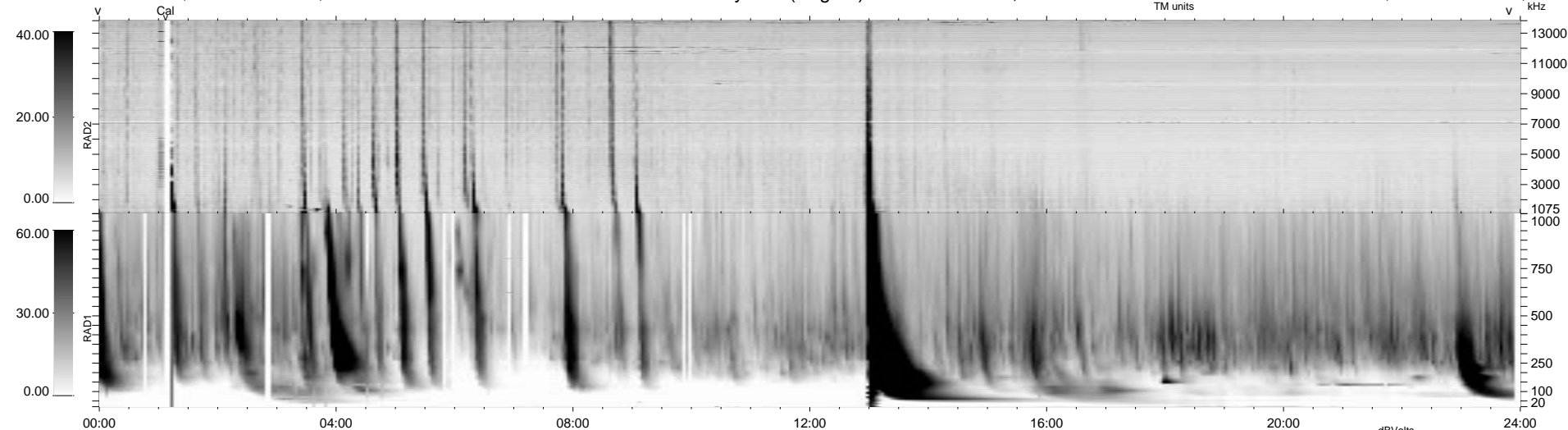


32 bad + 907 good MF/939MF projected (96%) - 0 missing MFs  
 Avg interval = 180 secs  
 Re = -208.50 (207.32, -22.18, 0.70 GSE)

1.7d VMS-SunOS LZ version = v02  
 DAILY Mon Sep 15, 2008  
 Re = 207.96 (206.80, -21.88, 1.18 GSE)

WIND/WAVES Summary Plot (Page 1) for 05-JUL-1999, DOY = 186



```

RAD2
Antenna Ey
Mode LIN(1)
SUM/SEP SEP
Toggle OFF

RAD1
Antenna Ex
Mode LIS(2,3)
SUM/SEP SUM
Toggle OFF

TNR
Antenna ExEy
Mode A-32
Sweep ABCDE
  
```