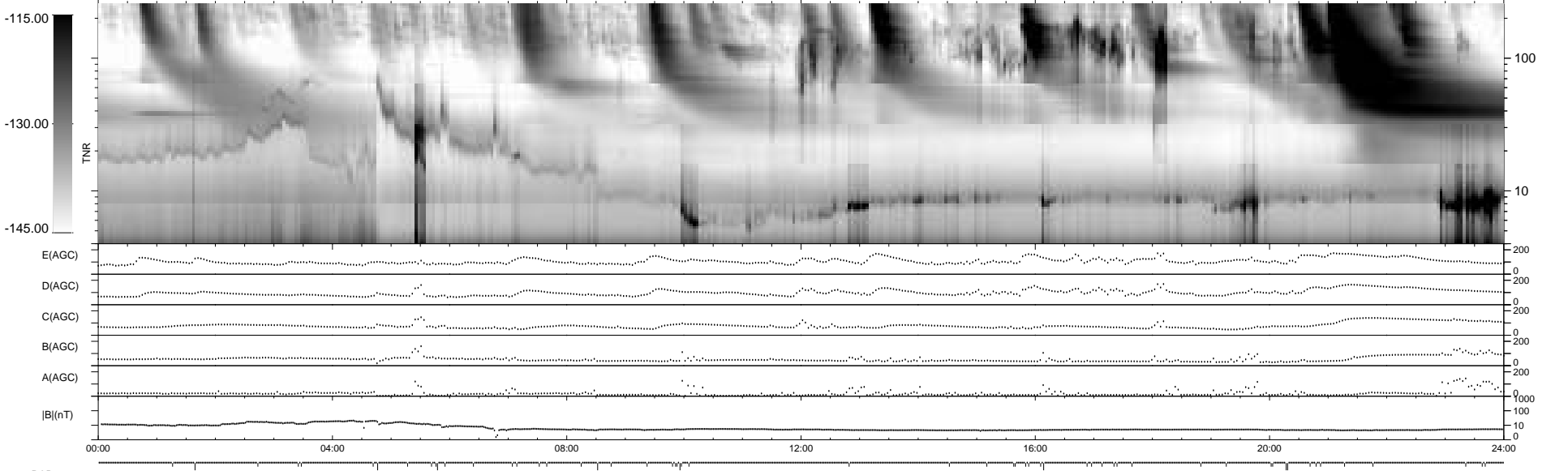
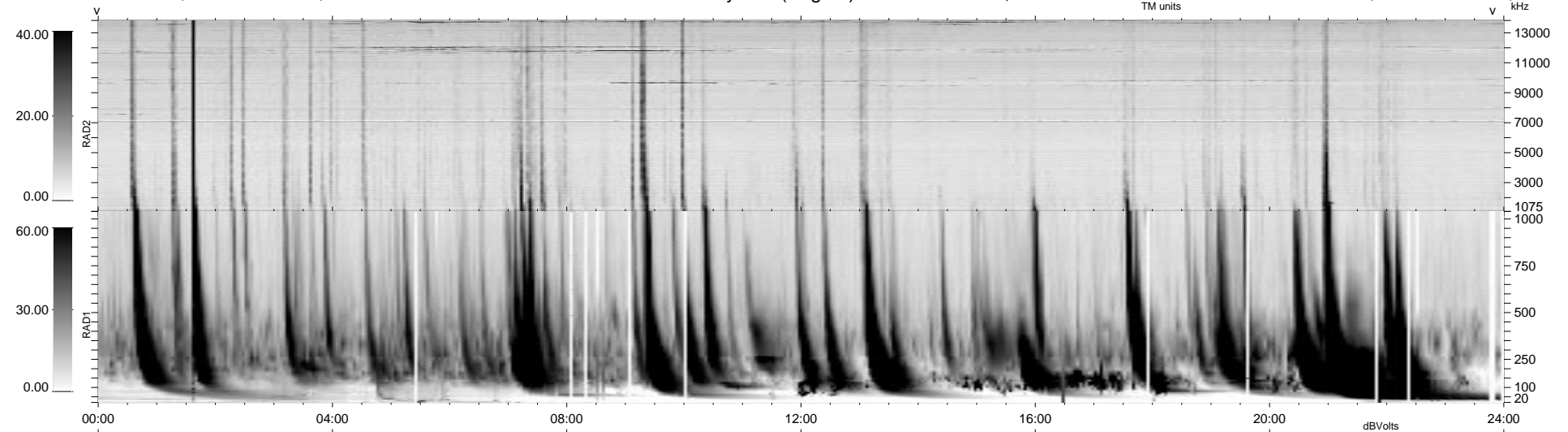


56 bad + 883 good MF/939MF projected (94%) - 0 missing MFs  
 Avg interval = 180 secs  
 Re = - 210.56 (209.34, -22.48, -2.67 GSE)

1.7d VMS-SunOS LZ version = v01  
 DAILY Mon Sep 15, 2008  
 Re = 210.44 (209.21, -22.58, -2.19 GSE)

WIND/WAVES Summary Plot (Page 1) for 28-JUN-1999, DOY = 179



RAD2  
 Antenna Ey  
 Mode LIN(1)  
 SUM/SEP SEP  
 Toggle OFF

RAD1  
 Antenna Ex  
 Mode LIS(2,3)  
 SUM/SEP SUM  
 Toggle OFF

TNR  
 Antenna ExEy  
 Mode A-32  
 Sweep ABCDE