

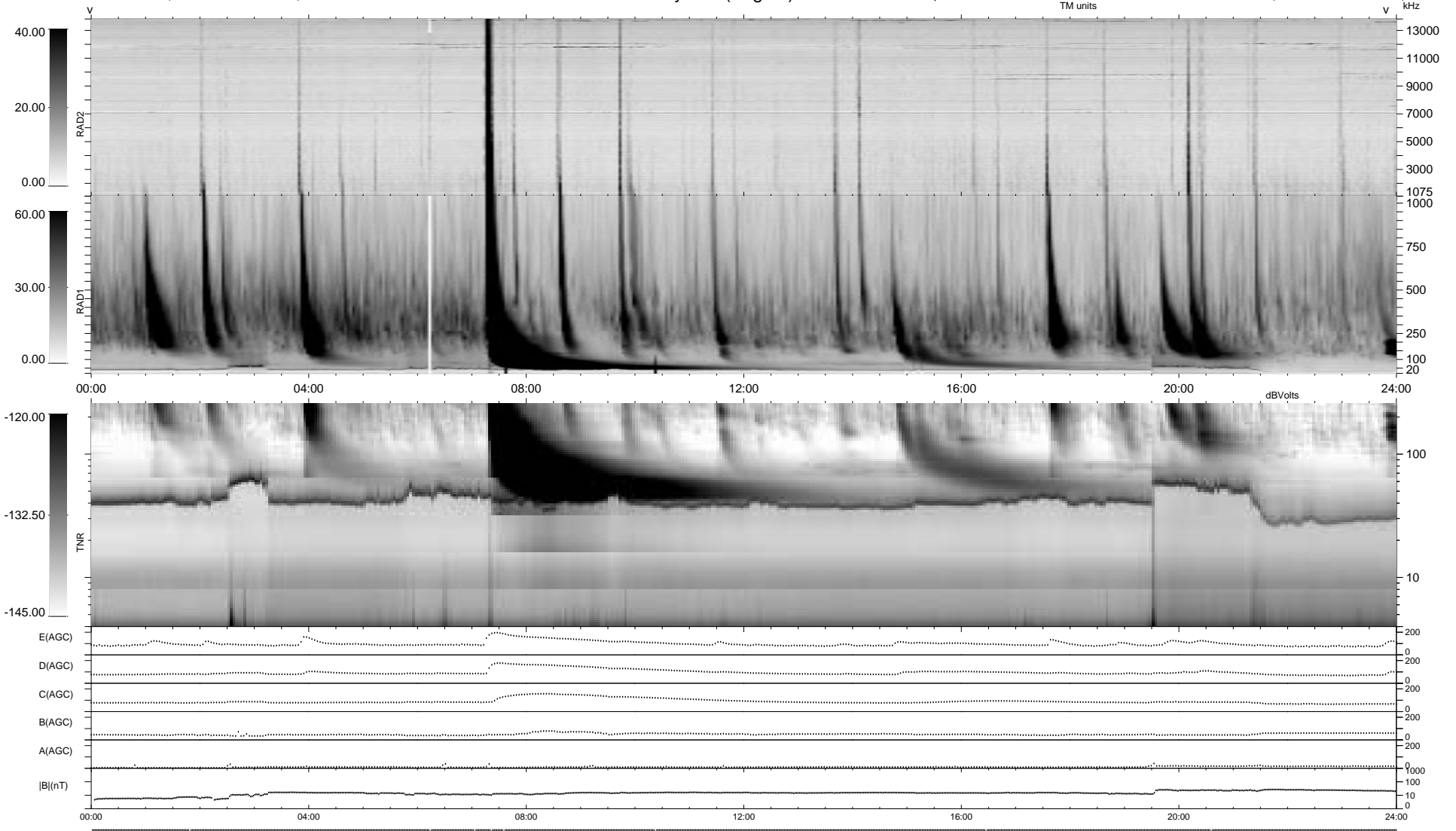
8 bad + 931 good MF/939MF projected (99%) - 0 missing MFs
Avg interval = 180 secs
Re = -210.64 (209.44, -22.19, -3.62 GSE)

1.7d VMS-SunOS

LZ version = v01

WIND/WAVES Summary Plot (Page 1) for 26-JUN-1999, DOY = 177

DAILY Mon Sep 15, 2008
Re = 210.62 (209.41, -22.34, -3.15 GSE)



RAD2
Antenna Ey
Mode LIN(1)
SUM/SEP SEP
Toggle OFF
RAD1
Antenna Ex
Mode LIS(2,3)
SUM/SEP SUM
Toggle OFF
TNR
Antenna ExEy
Mode A-32
Sweep ABCDE