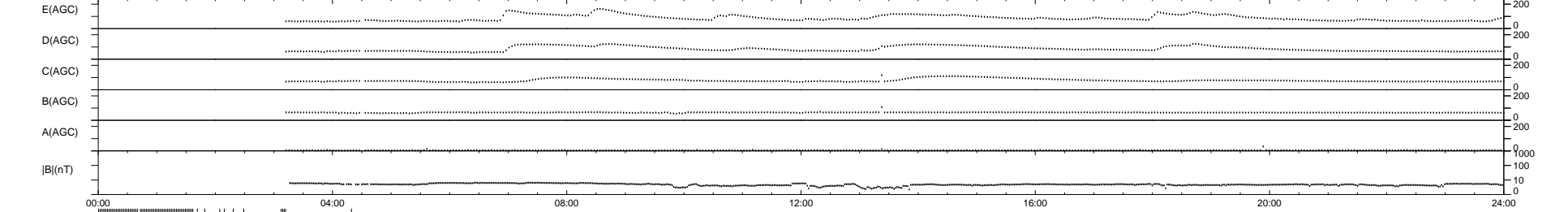
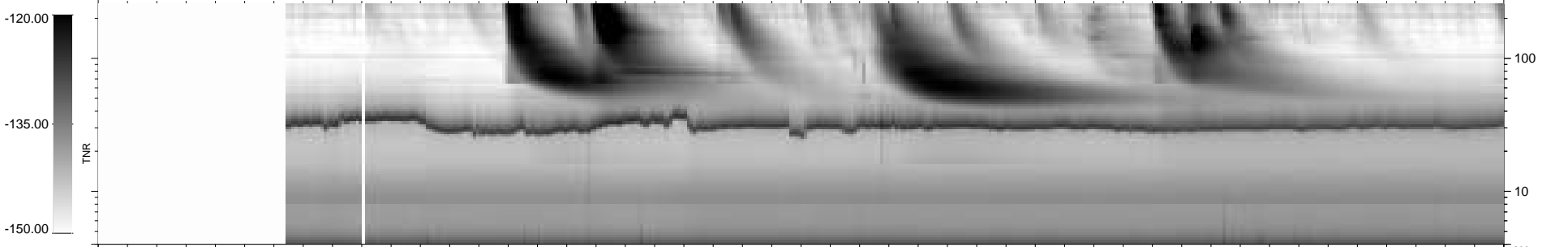
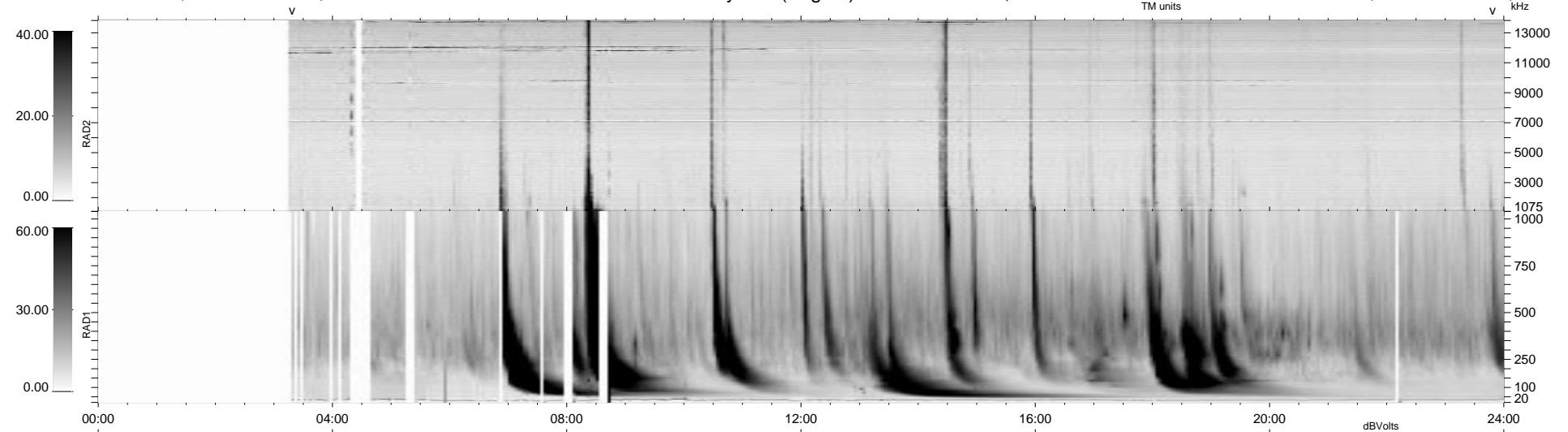


122 bad + 743 good MF/939MF projected (79%) - 74 missing MFs
Avg interval = 180 secs
Re = 210.54 (209.35, -21.90, -4.49 GSE)

1.7d VMS-SunOS LZ version = v01
DAILY Mon Sep 15, 2008
Re = 210.61 (209.42, -22.03, -4.09 GSE)

WIND/WAVES Summary Plot (Page 1) for 24-JUN-1999, DOY = 175



RAD2 Antenna Mode SUM/SEP Toggle
RAD1 Antenna Mode SUM/SEP Toggle
TNR Antenna Mode Sweep