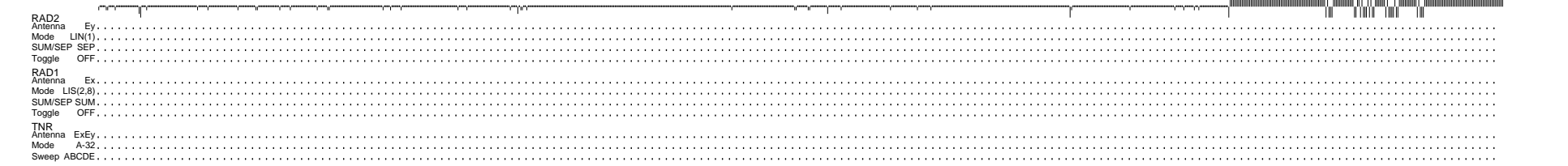
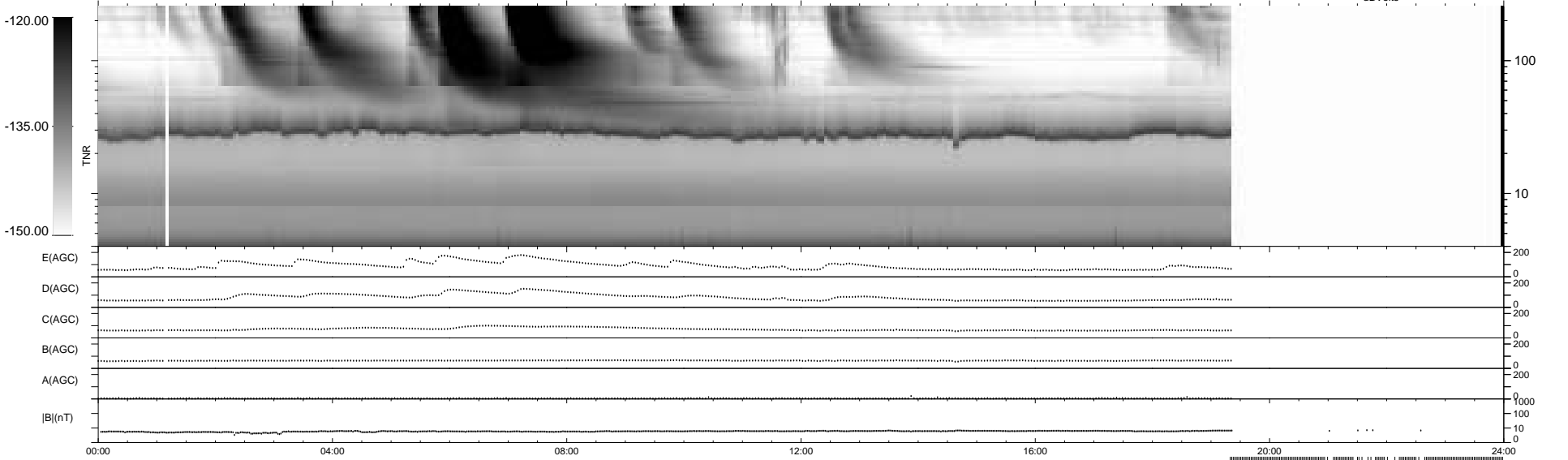
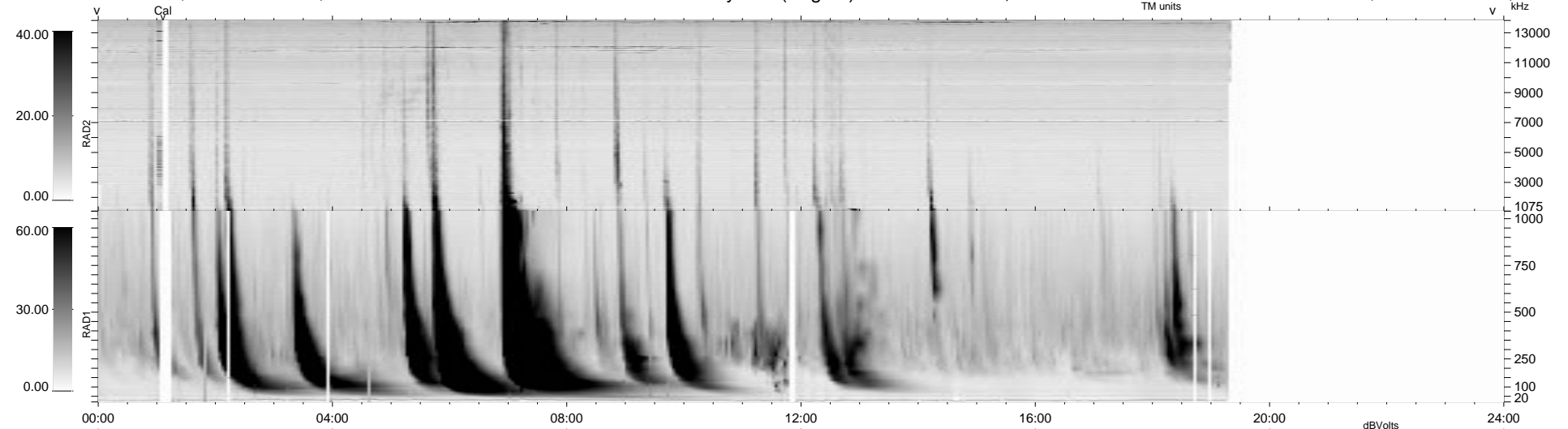


69 bad + 711 good MF/939MF projected (75%) - 159 missing MFs
 Avg interval = 180 secs
 Re = -210.36 (209.18, -21.72, -5.02 GSE)

1.7d VMS-SunOS LZ version = v02
 DAILY Mon Sep 15, 2008
 Re = 210.52 (209.33, -21.88, -4.56 GSE)

WIND/WAVES Summary Plot (Page 1) for 23-JUN-1999, DOY = 174



```

RAD2
Antenna Ey .....
Mode LIN(1) .....
SUM/SEP SEP .....
Toggle OFF .....

RAD1
Antenna Ex .....
Mode LIS(2,3) .....
SUM/SEP SUM .....
Toggle OFF .....

TNR
Antenna ExEy .....
Mode A-32 .....
Sweep ABCDE .....
  
```