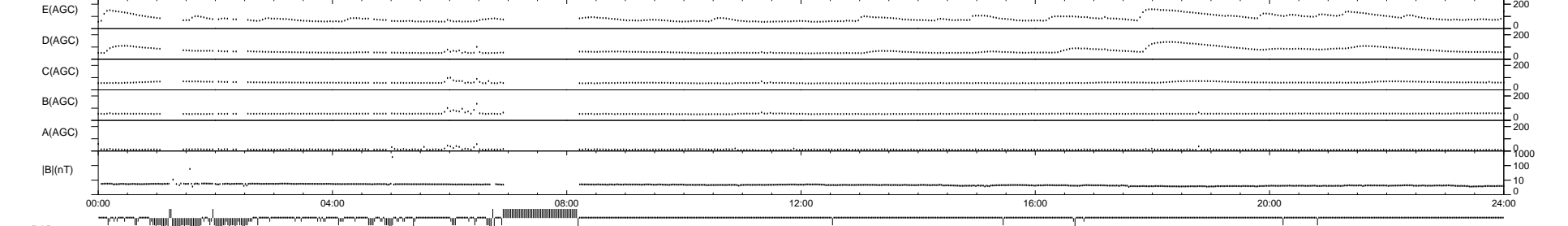
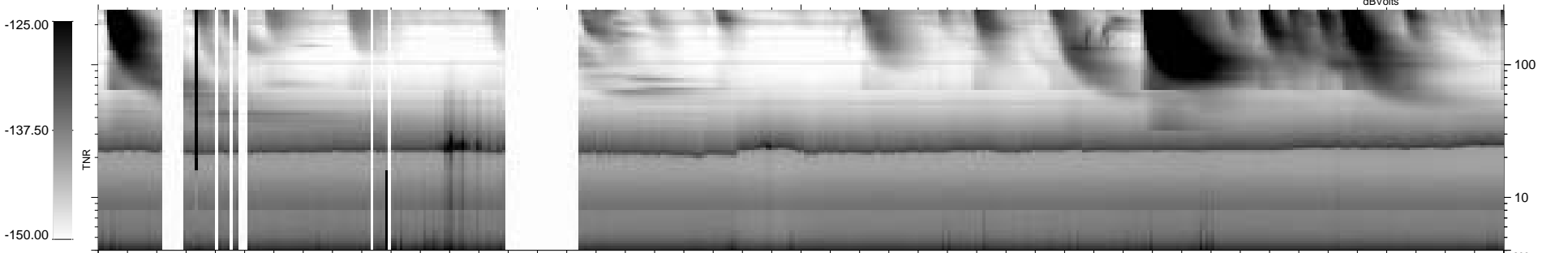
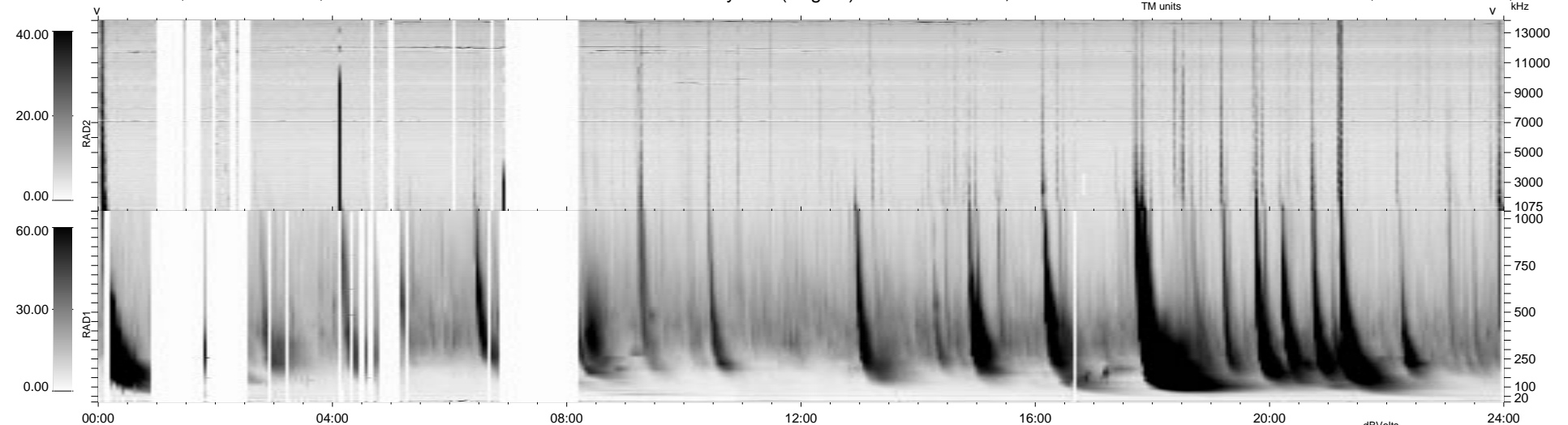


124 bad + 761 good MF/939MF projected (81%) - 54 missing MFs
 Avg interval = 180 secs
 Re = 209.84 (208.65, -21.45, -5.93 GSE)

1.7d VMS-SunOS LZ version = v01
 DAILY Mon Sep 15, 2008
 Re = 210.14 (208.95, -21.58, -5.48 GSE)

WIND/WAVES Summary Plot (Page 1) for 21-JUN-1999, DOY = 172



```

RAD2
Antenna Ey .....
Mode LIN(1) .....
SUM/SEP SEP .....
Toggle OFF .....

RAD1
Antenna Ex .....
Mode LIS(2,3) .....
SUM/SEP SUM .....
Toggle OFF .....

TNR
Antenna ExEy .....
Mode A-32 .....
Sweep ABCDE .....
  
```