

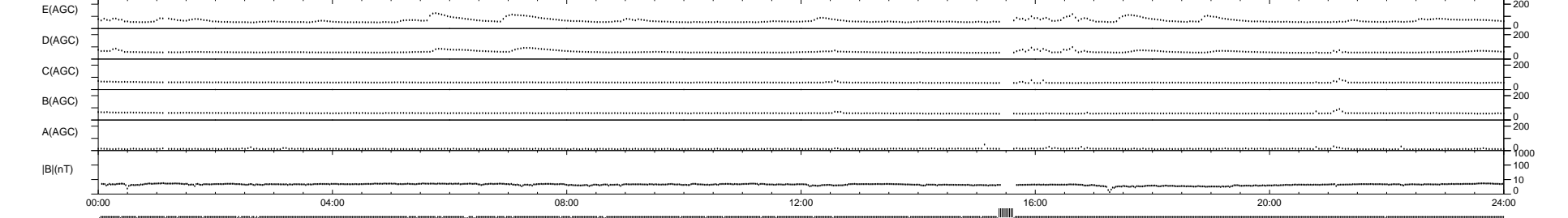
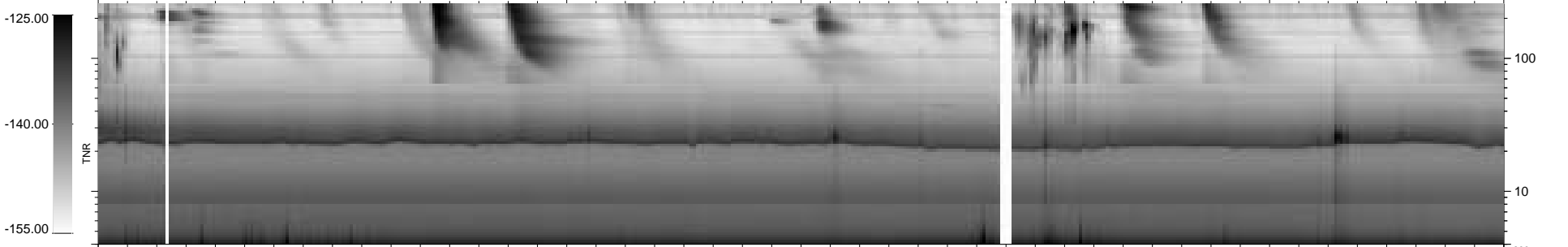
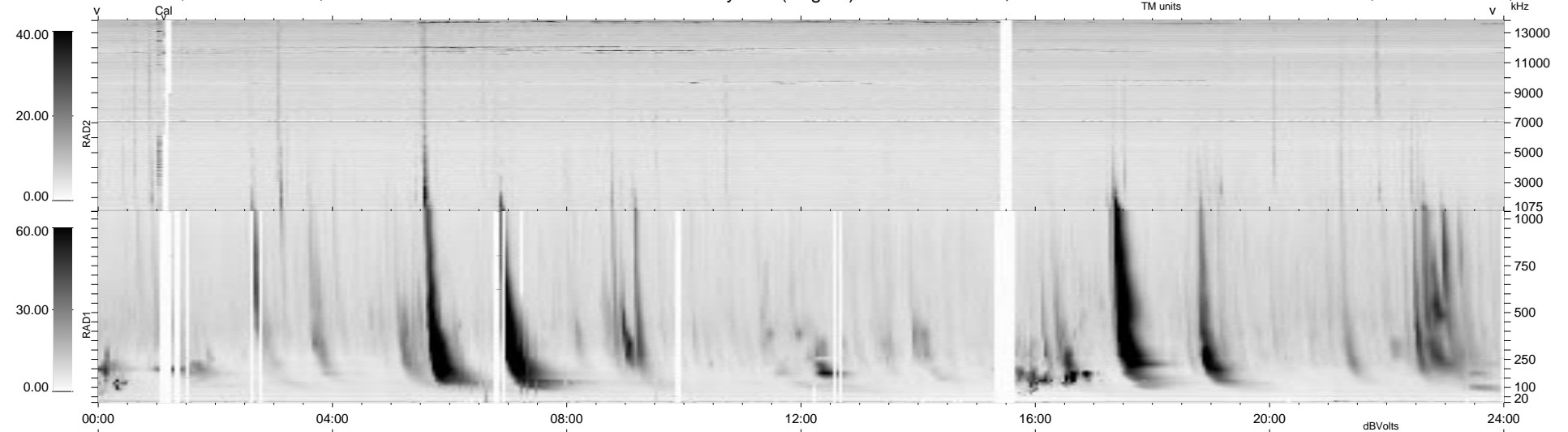
41 bad + 888 good MF/939MF projected (94%) - 10 missing MFs
 Avg interval = 180 secs
 Re = 208.97 (207.78, -21.25, -6.82 GSE)

1.7d VMS-SunOS

LZ version = v01

WIND/WAVES Summary Plot (Page 1) for 19-JUN-1999, DOY = 170

DAILY Mon Sep 15, 2008
 Re = 209.45 (208.26, -21.34, -6.38 GSE)



```

RAD2
Antenna Ey
Mode LIN(1)
SUM/SEP SEP
Toggle OFF

RAD1
Antenna Ex
Mode LIS(2,3)
SUM/SEP SUM
Toggle OFF

TNR
Antenna ExEy
Mode A-32
Sweep ABCDE
  
```