

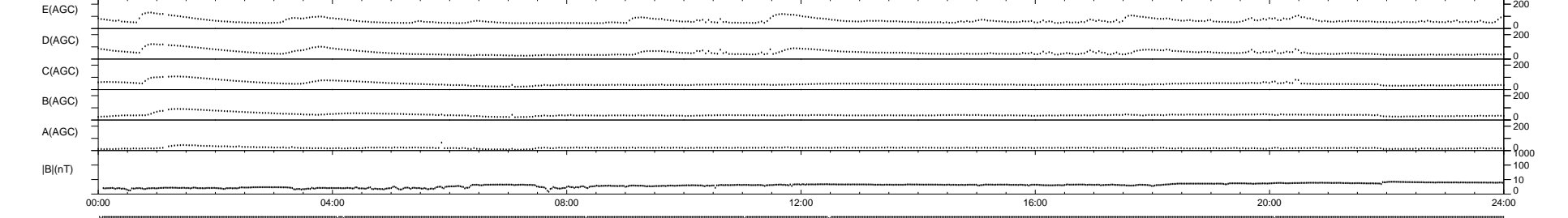
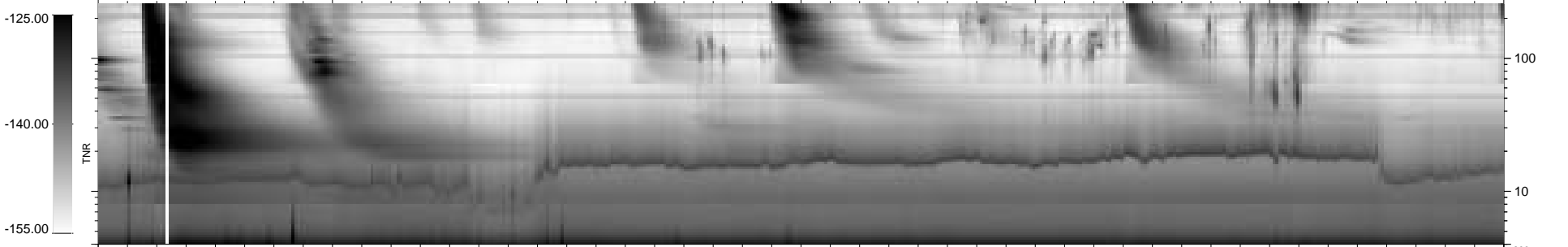
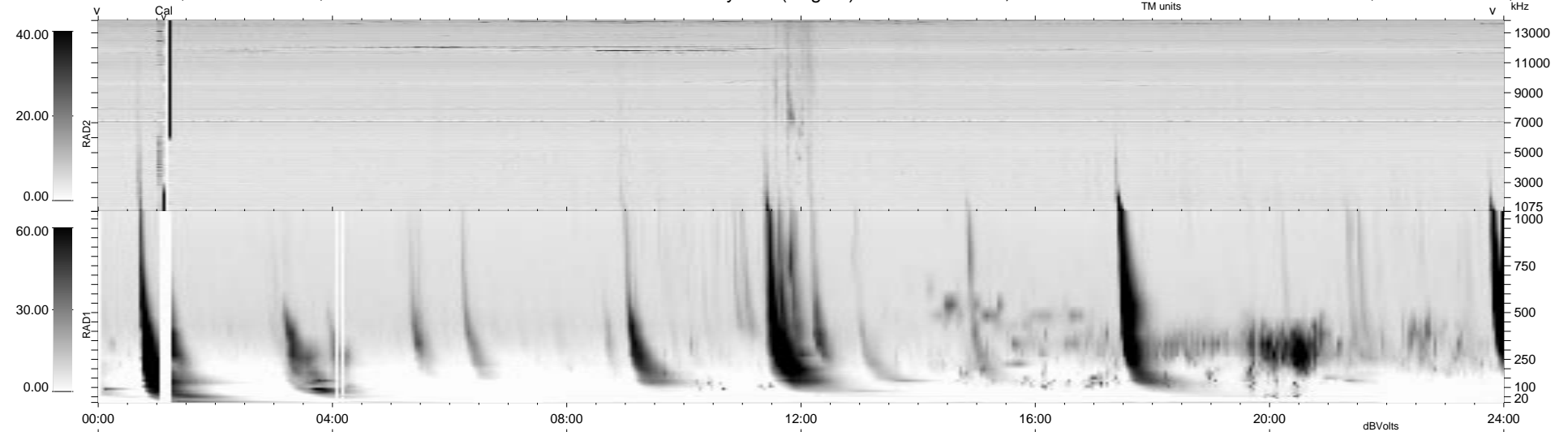
8 bad + 931 good MF/939MF projected (99%) - 0 missing MFs
 Avg interval = 180 secs
 Re = -200.80 (199.44, -21.17, -9.86 GSE)

1.7d VMS-SunOS

LZ version = v01

WIND/WAVES Summary Plot (Page 1) for 11-JUN-1999, DOY = 162

DAILY Mon Sep 15, 2008
 Re = 202.31 (200.97, -21.16, -9.54 GSE)



RAD2
 Antenna Ey
 Mode LIN(1)
 SUM/SEP SEP
 Toggle OFF
 RAD1
 Antenna
 Mode
 SUM/SEP
 Toggle
 TNR
 Antenna ExEy
 Mode A-32
 Sweep ABCDE