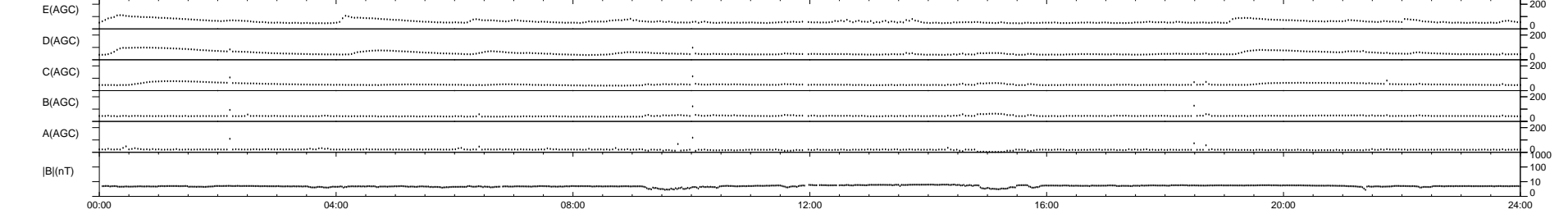
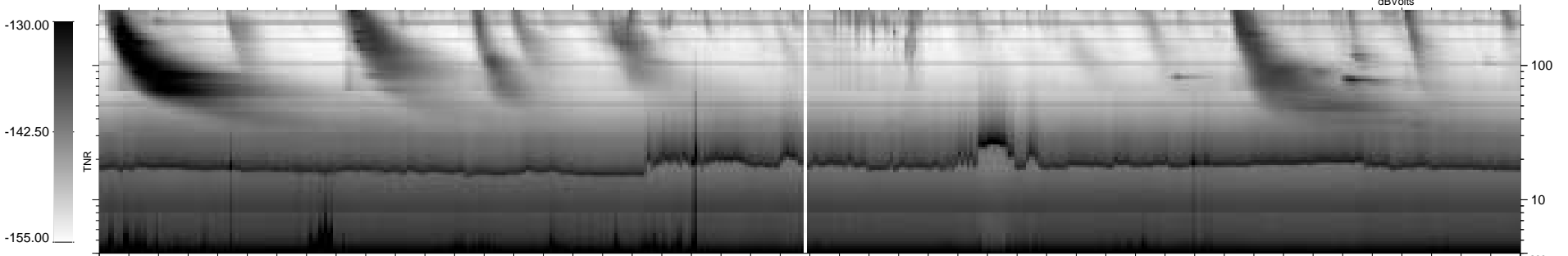
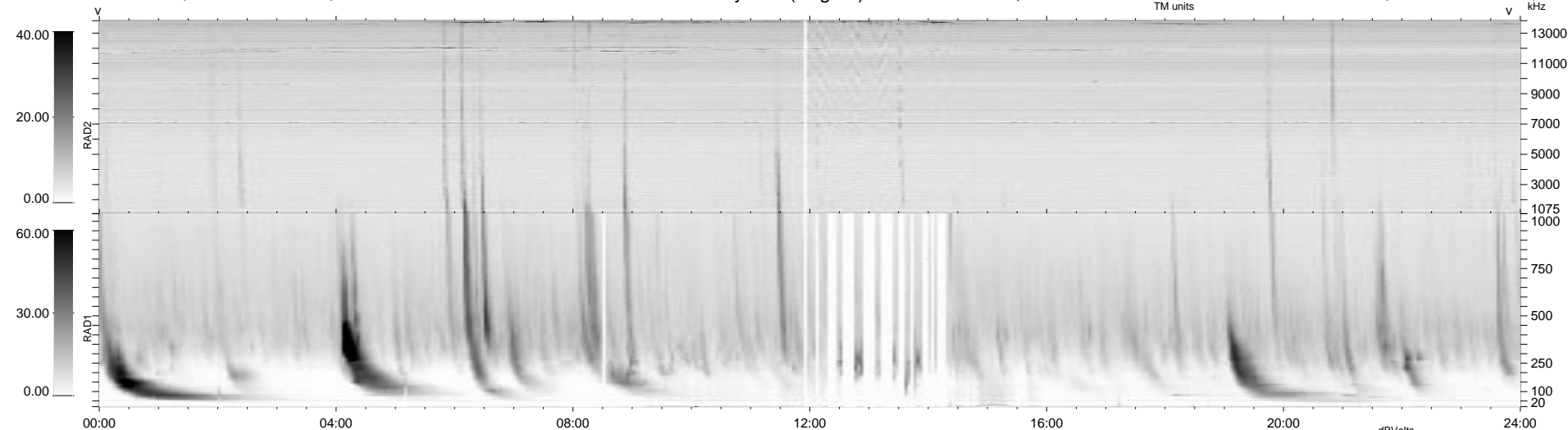


43 bad + 896 good MF/939MF projected (95%) - 0 missing MFs
 Avg interval = 180 secs
 Re = - 191.01 (189.51, -21.14, -11.13 GSE)

1.7d VMS-SunOS LZ version = v01
 DAILY Mon Sep 15, 2008
 Re = 193.24 (191.77, -21.15, -10.92 GSE)

WIND/WAVES Summary Plot (Page 1) for 06-JUN-1999, DOY = 157



RAD2
 Antenna Ey
 Mode LIN(1)
 SUM/SEP SEP
 Toggle OFF

RAD1
 Antenna Ex
 Mode LIS(2,3)
 SUM/SEP SUM
 Toggle OFF

TNR
 Antenna ExEy
 Mode A-32
 Sweep ABCDE