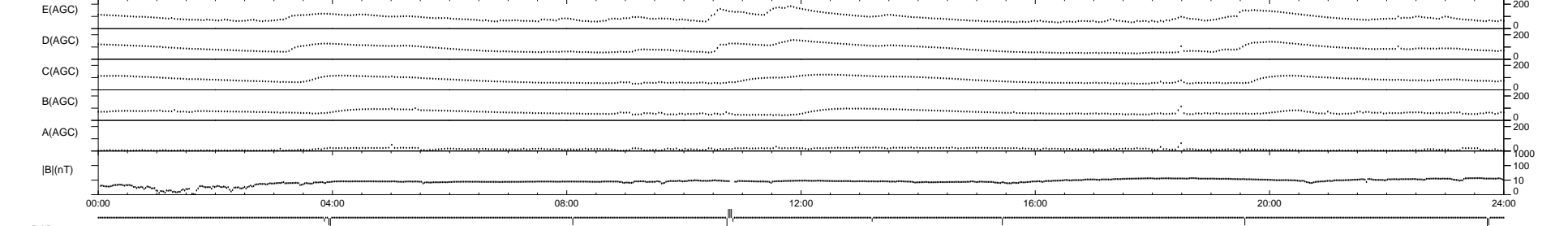
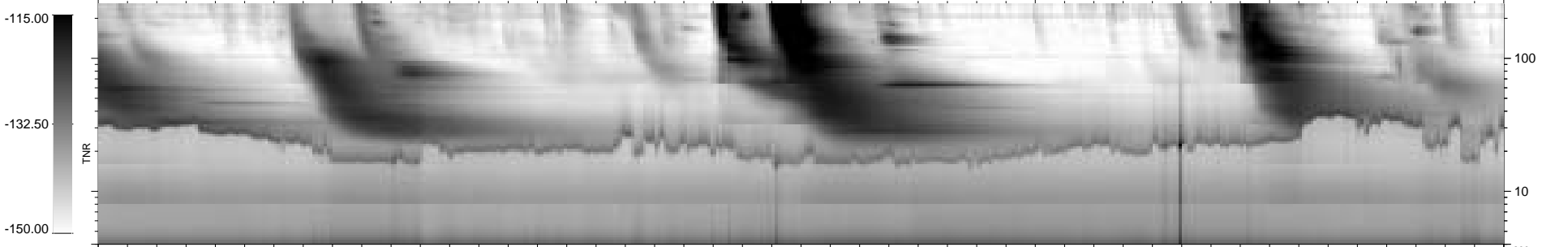
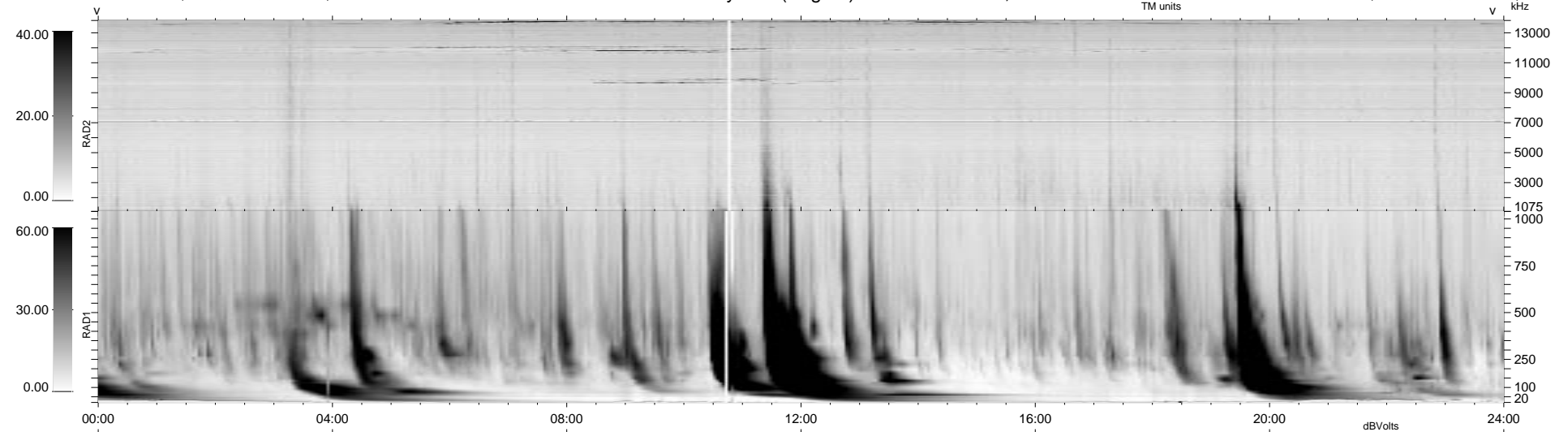


11 bad + 926 good MF/940MF projected (98%) - 3 missing MFs  
 Avg interval = 180 secs  
 Re = 180.56 (178.92, -21.23, -11.75 GSE)

1.7d VMS-SunOS LZ version = v01  
 DAILY Mon Sep 15, 2008  
 Re = 183.38 (181.78, -21.17, -11.63 GSE)

WIND/WAVES Summary Plot (Page 1) for 02-JUN-1999, DOY = 153



RAD2  
 Antenna Ey  
 Mode LIN(1)  
 SUM/SEP SEP  
 Toggle OFF

RAD1  
 Antenna Ex  
 Mode LIS(2,3)  
 SUM/SEP SUM  
 Toggle OFF

TNR  
 Antenna ExEy  
 Mode A-32  
 Sweep ABCDE