

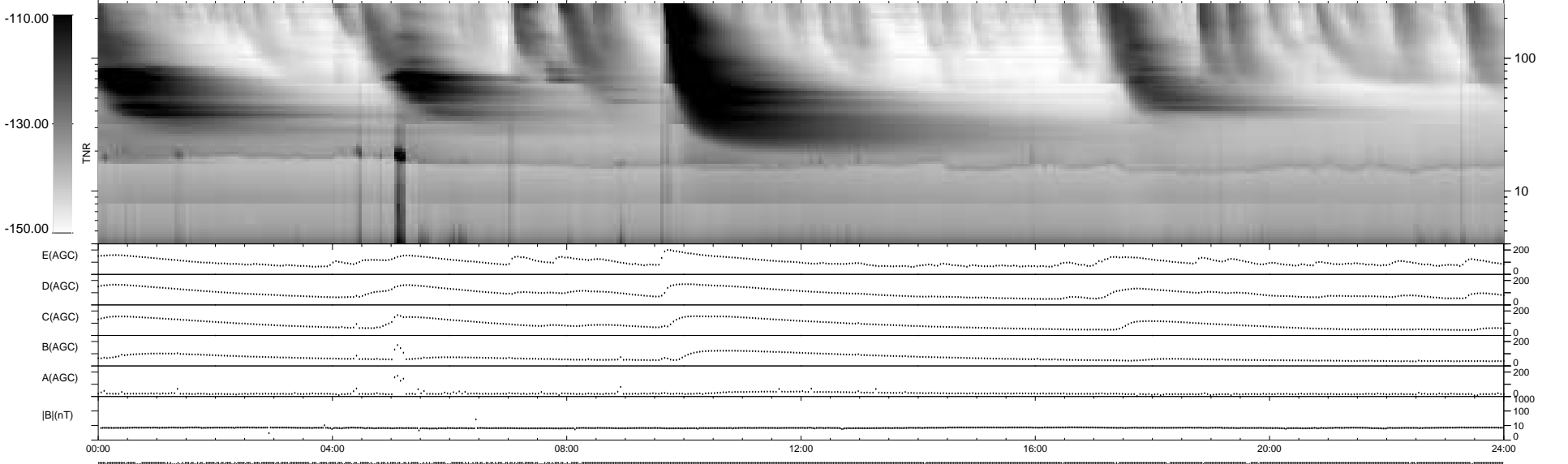
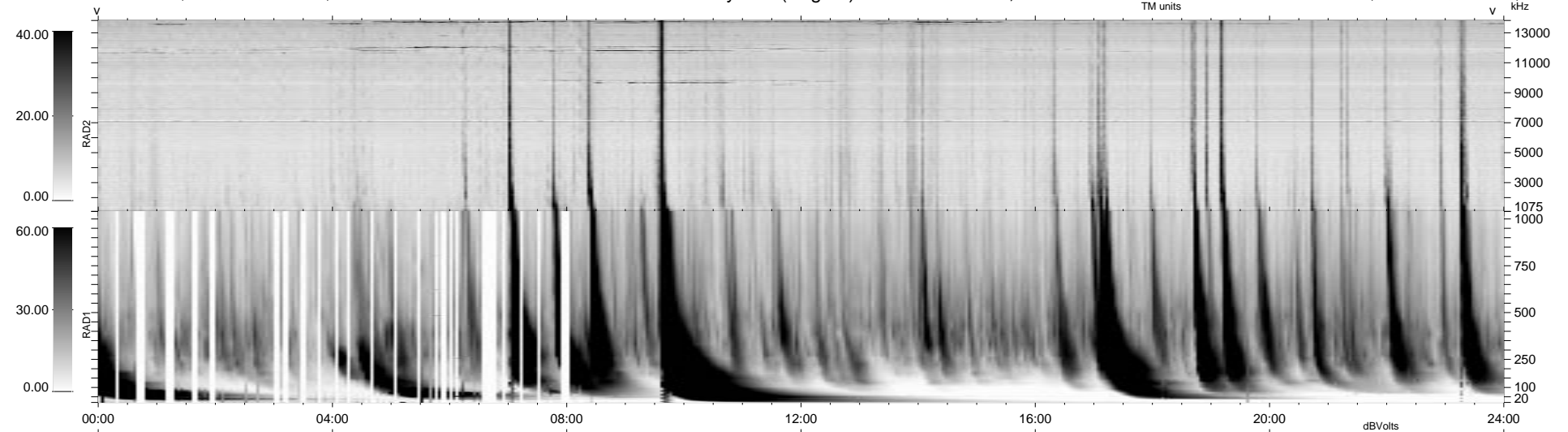
116 bad + 823 good MF/939MF projected (87%) - 0 missing MFs
 Avg interval = 180 secs
 Re = - 174.40 (172.66, -21.47, -11.92 GSE)

1.7d VMS-SunOS

LZ version = v01

WIND/WAVES Summary Plot (Page 1) for 31-MAY-1999, DOY = 151

DAILY Mon Sep 15, 2008
 Re = 177.54 (175.86, -21.33, -11.85 GSE)



```

RAD2
Antenna Ey
Mode LIN(1)
SUM/SEP SEP
Toggle OFF

RAD1
Antenna Ex
Mode LIS(2,3)
SUM/SEP SUM
Toggle OFF

TNR
Antenna ExEy
Mode A-32
Sweep ABCDE
  
```