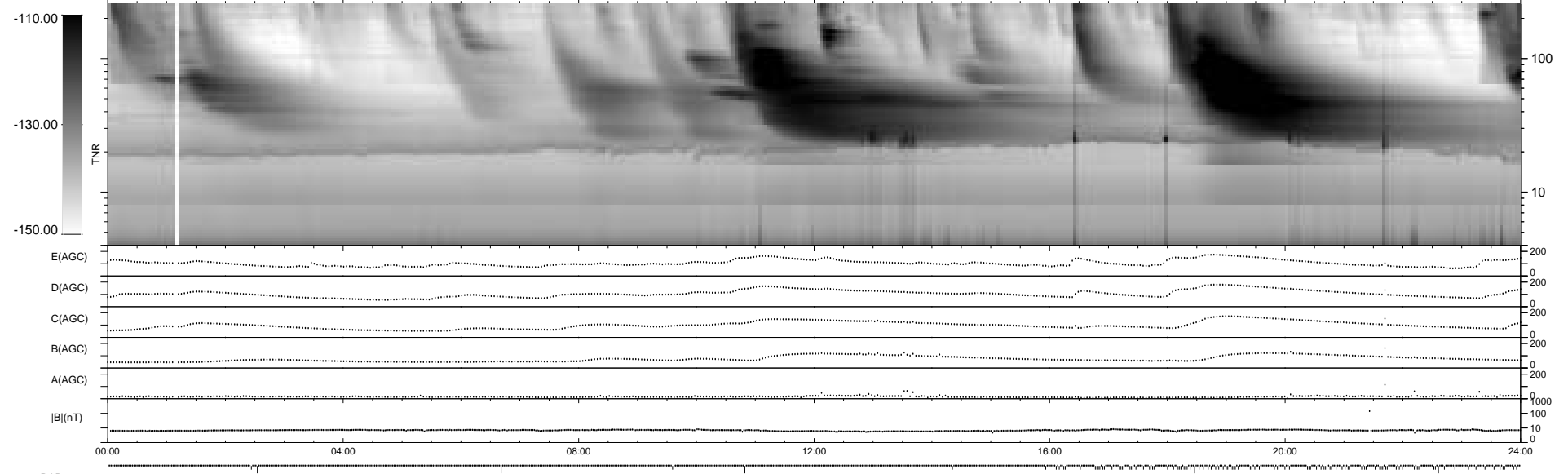
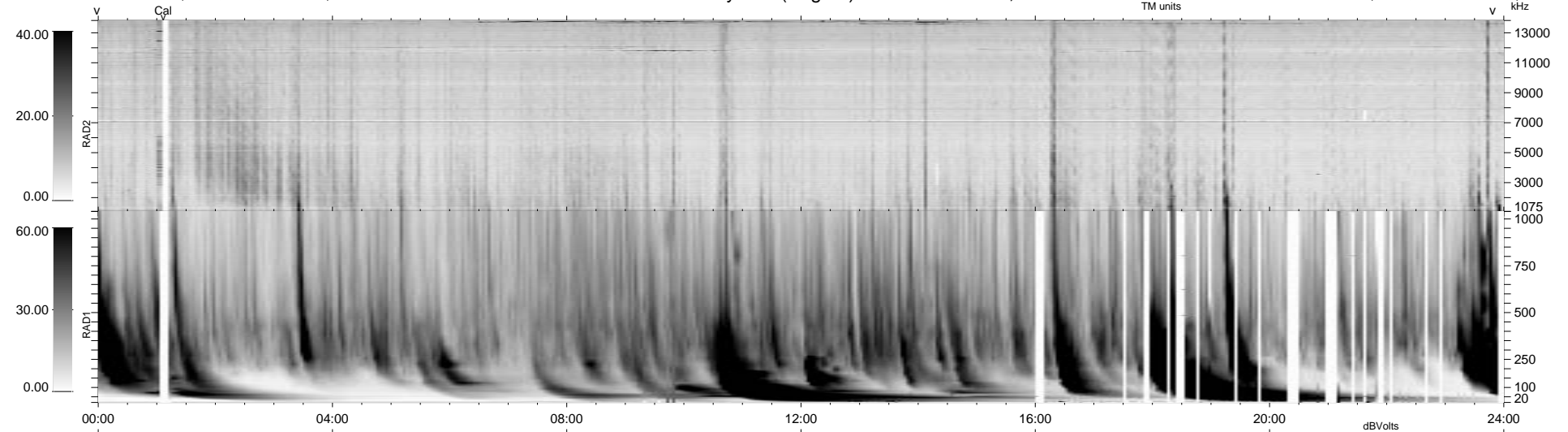


106 bad + 833 good MF/939MF projected (88%) - 0 missing MFs  
 Avg interval = 180 secs  
 Re = - 171.06 (169.26, -21.68, -11.96 GSE)

1.7d VMS-SunOS LZ version = v01  
 DAILY Mon Sep 15, 2008  
 Re = 174.38 (172.64, -21.47, -11.92 GSE)

### WIND/WAVES Summary Plot (Page 1) for 30-MAY-1999, DOY = 150



```

RAD2
Antenna Ey
Mode LIN(1)
SUM/SEP SEP
Toggle OFF

RAD1
Antenna Ex
Mode LIS(2,3)
SUM/SEP SUM
Toggle OFF

TNR
Antenna ExEy
Mode A-32
Sweep ABCDE
  
```