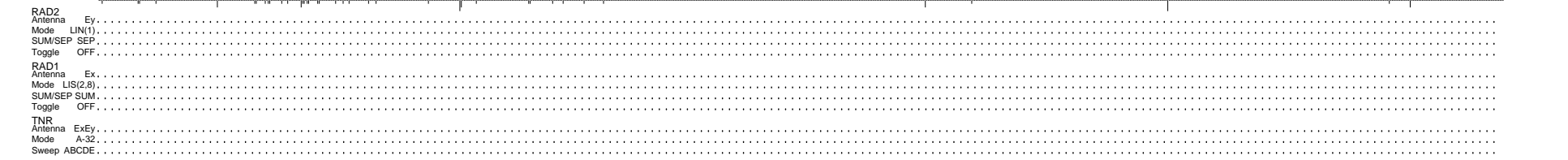
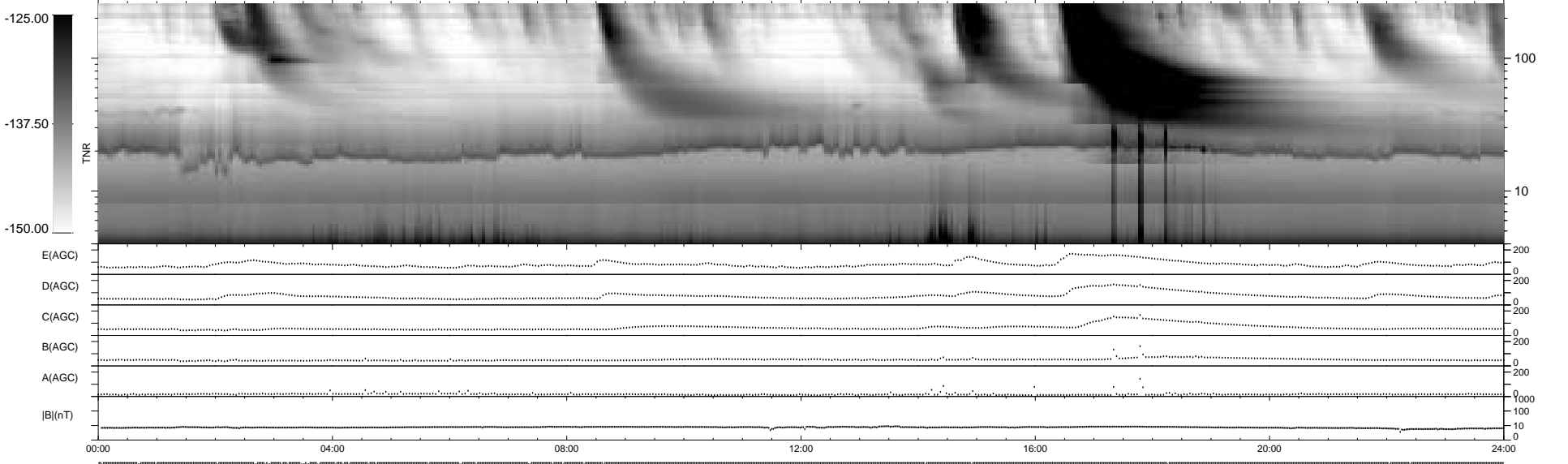
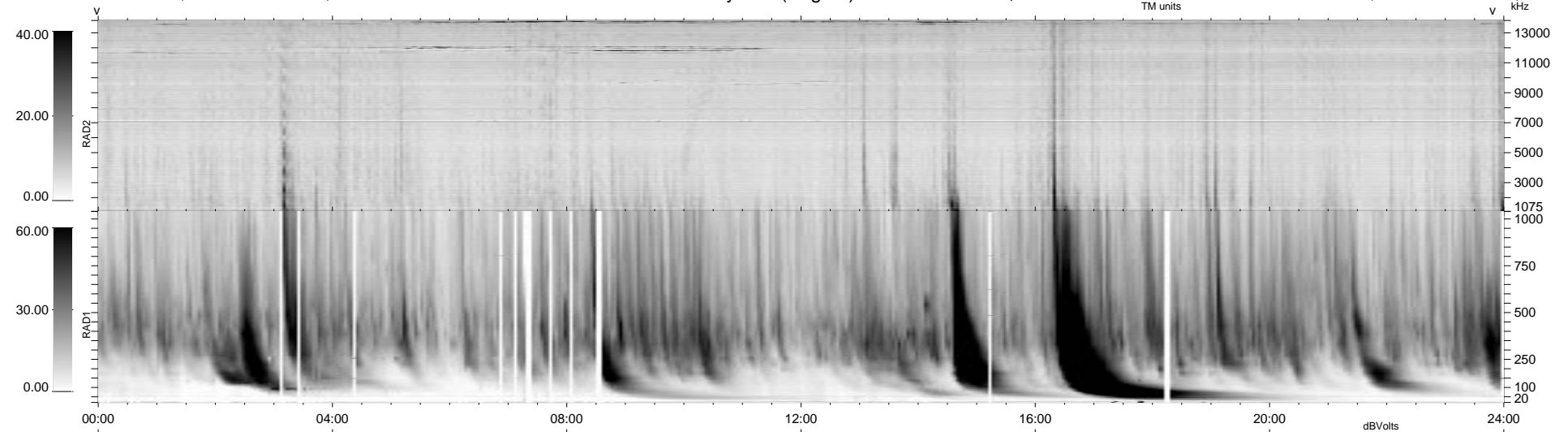


39 bad + 900 good MF/939MF projected (95%) - 0 missing MFs
Avg interval = 180 secs
Re = -167.53 (165.65, -21.95, -11.97 GSE)

1.7d VMS-SunOS LZ version = v01
DAILY Mon Sep 15, 2008
Re = 171.04 (169.23, -21.68, -11.96 GSE)

WIND/WAVES Summary Plot (Page 1) for 29-MAY-1999, DOY = 149



RAD2 Antenna Ey
Mode LIN(1)
SUM/SEP SEP
Toggle OFF
RAD1 Antenna Ex
Mode LIS(2,3)
SUM/SEP SUM
Toggle OFF
TNR Antenna ExEy
Mode A-32
Sweep ABCDE