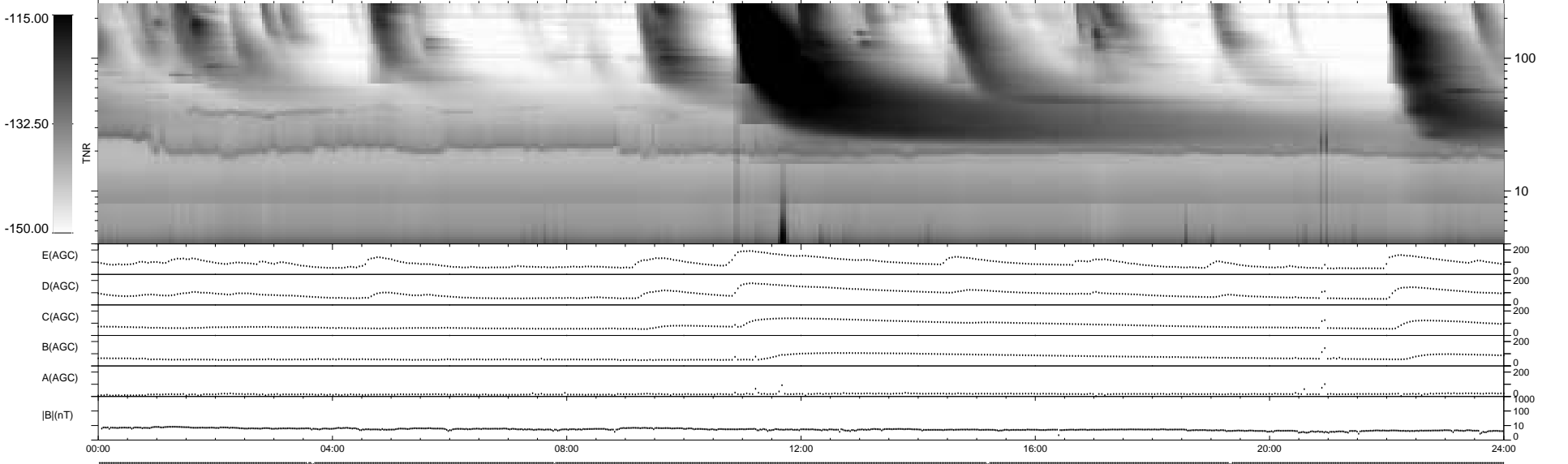
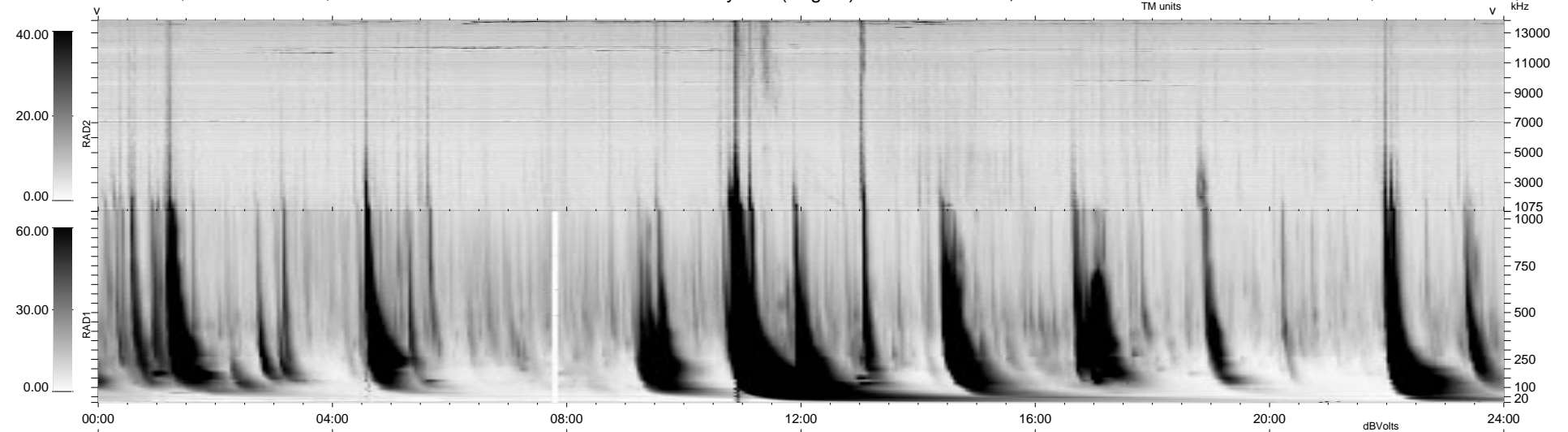


8 bad + 931 good MF/939MF projected (99%) - 0 missing MFs
Avg interval = 180 secs
Re = - 159.82 (157.75, -22.74, -11.91 GSE)

1.7d VMS-SunOS LZ version = v01
DAILY Mon Sep 15, 2008
Re = 163.76 (161.79, -22.31, -11.96 GSE)

WIND/WAVES Summary Plot (Page 1) for 27-MAY-1999, DOY = 147



RAD2
Antenna Ey
Mode LIN(1)
SUM/SEP SEP
Toggle OFF

RAD1
Antenna Ex
Mode LIS(2,3)
SUM/SEP SUM
Toggle OFF

TNR
Antenna ExEy
Mode A-32
Sweep ABCDE