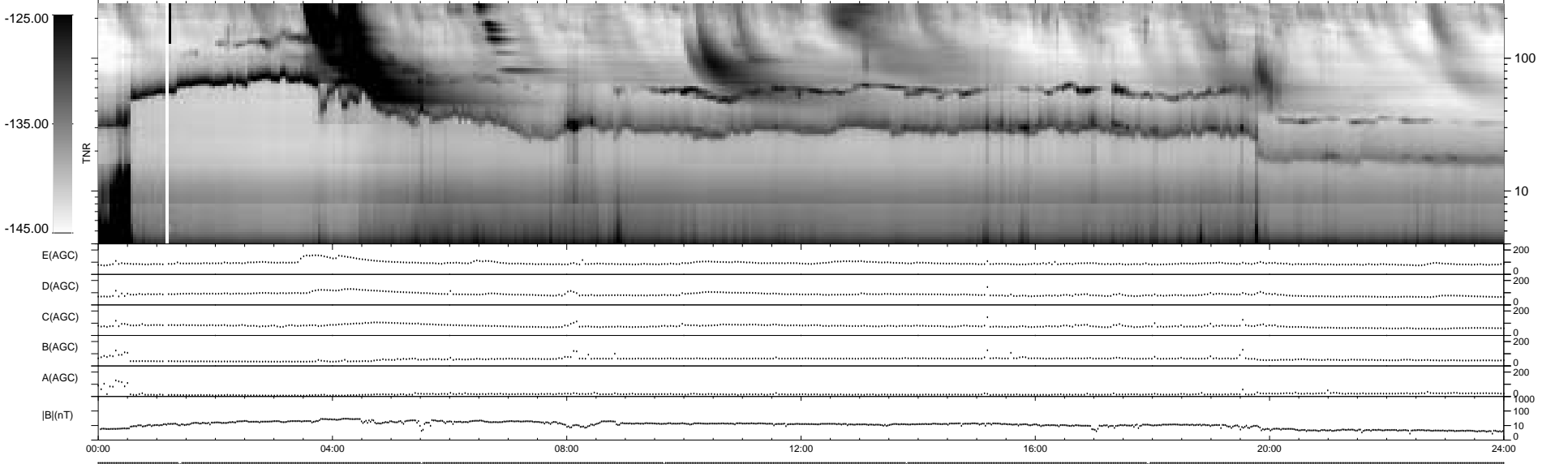
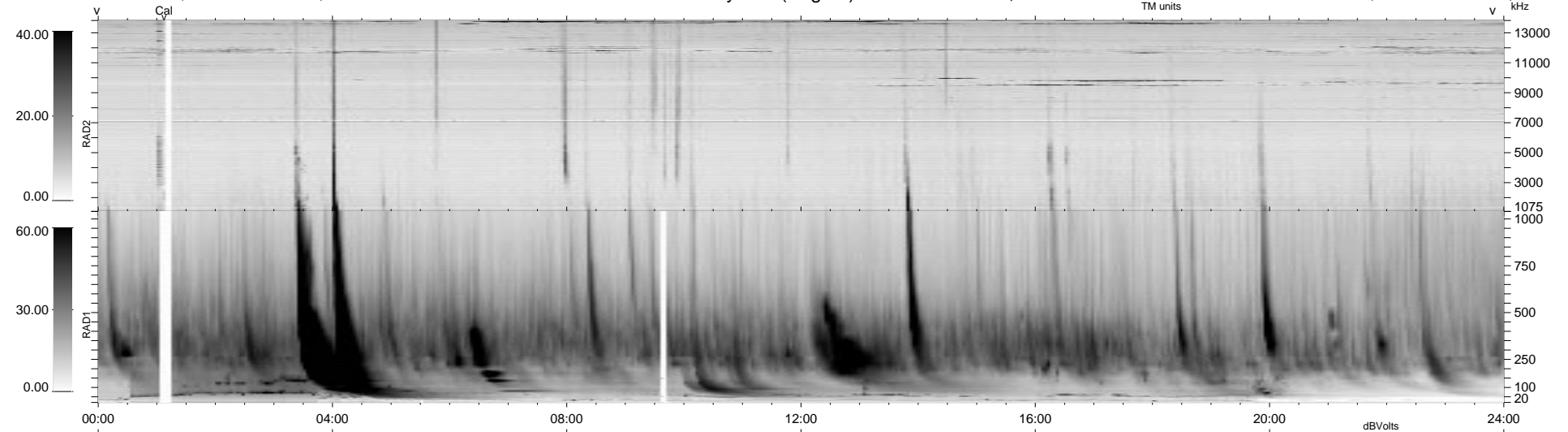


7 bad + 933 good MF/940MF projected (99%) - 0 missing MFs
Avg interval = 180 secs
Re = - 109.43 (104.41, -31.39, -9.48 GSE)

1.7d VMS-SunOS LZ version = v01
DAILY Mon Sep 15, 2008
Re = 116.79 (112.41, -30.05, -9.99 GSE)

WIND/WAVES Summary Plot (Page 1) for 18-MAY-1999, DOY = 138



RAD2
Antenna Ey
Mode LIN(1)
SUM/SEP SEP
Toggle OFF

RAD1
Antenna Ex
Mode LIS(2,3)
SUM/SEP SUM
Toggle OFF

TNR
Antenna ExEy
Mode A-32
Sweep ABCDE