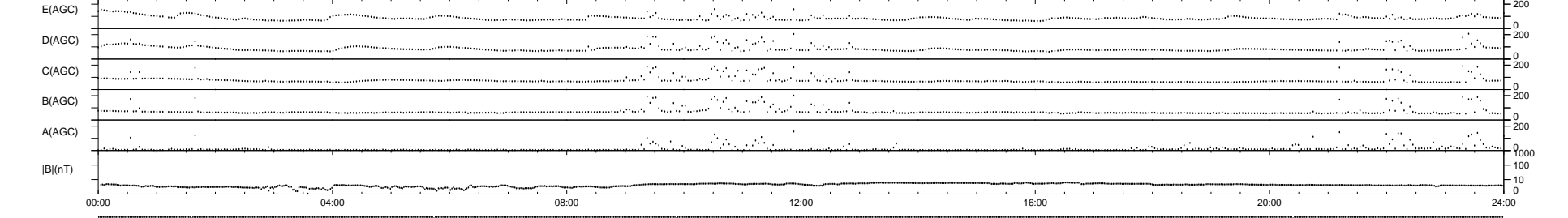
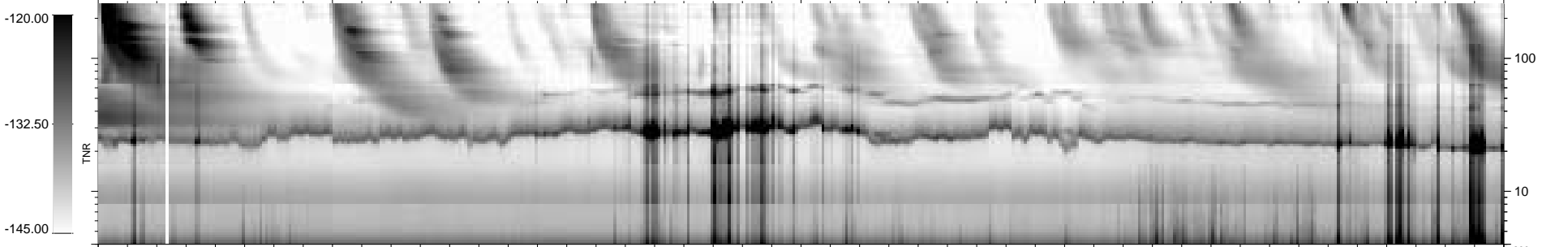
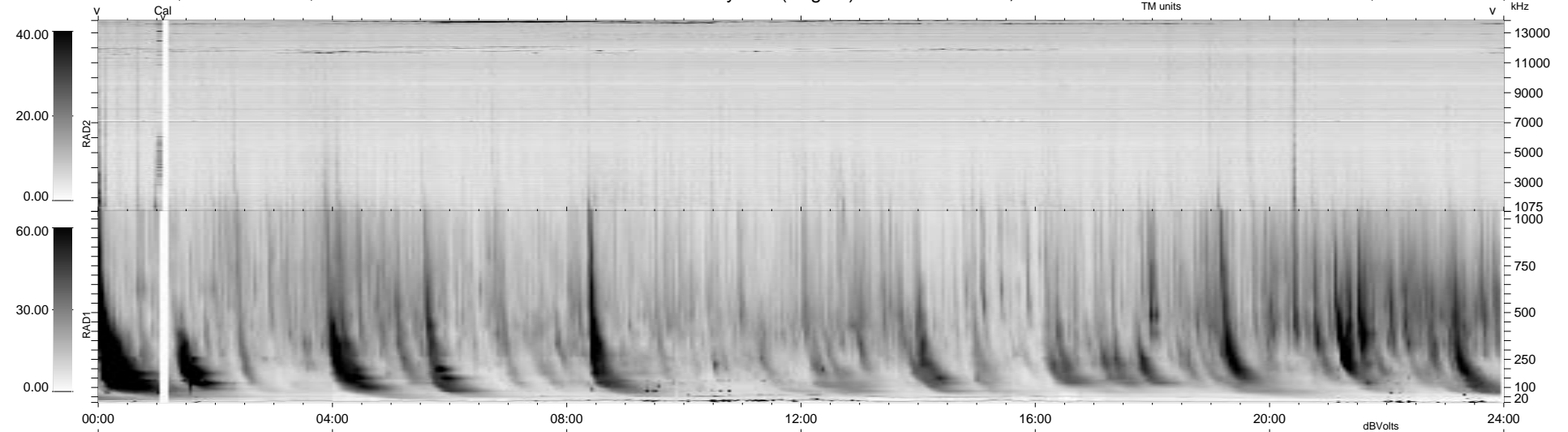


4 bad + 935 good MF/939MF projected (99%) - 0 missing MFs
 Avg interval = 180 secs
 Re = 92.52 (85.64, -34.05, -8.16 GSE)

1.7d VMS-SunOS LZ version = v01

WIND/WAVES Summary Plot (Page 1) for 16-MAY-1999, DOY = 136

DAILY Mon Sep 15, 2008
 Re = 101.31 (95.45, -32.76, -8.87 GSE)



RAD2
 Antenna Ey
 Mode LIN(1)
 SUM/SEP SEP
 Toggle OFF
 RAD1
 Antenna Ex
 Mode LIS(2,3)
 SUM/SEP SUM
 Toggle OFF
 TNR
 Antenna ExEy
 Mode A-32
 Sweep ABCDE