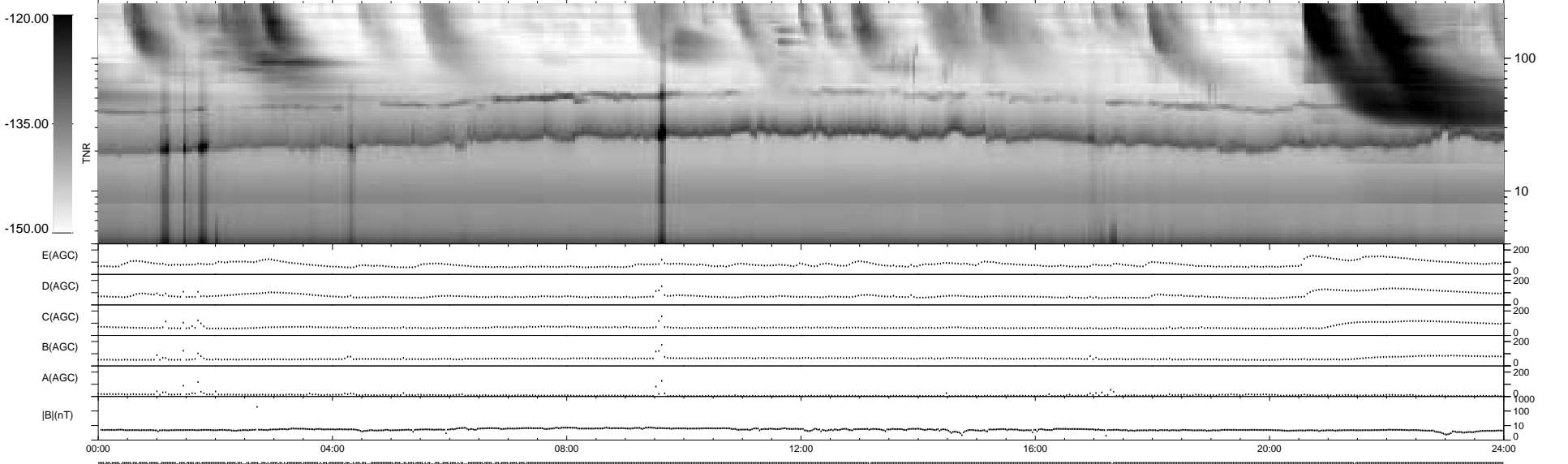
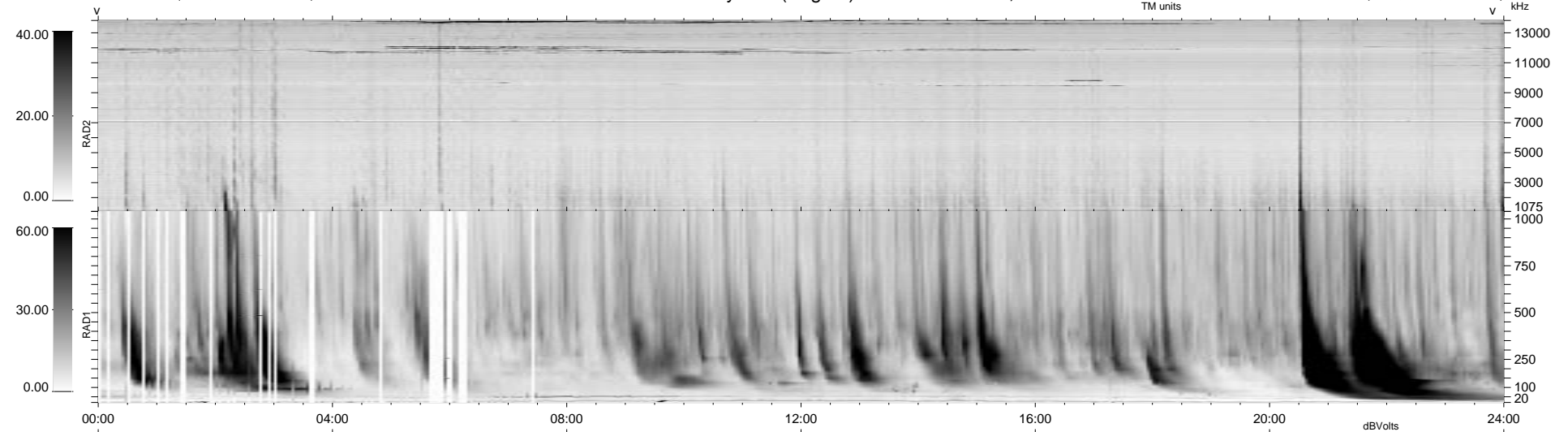


67 bad + 872 good MF/939MF projected (92%) - 0 missing MFs
 Avg interval = 180 secs
 Re = 82.76 (74.55, -35.17, -7.32 GSE)

1.7d VMS-SunOS LZ version = v01

WIND/WAVES Summary Plot (Page 1) for 15-MAY-1999, DOY = 135

DAILY Mon Sep 15, 2008
 Re = 92.46 (85.57, -34.06, -8.15 GSE)



```

RAD2
Antenna Ey .....
Mode LIN(1) .....
SUM/SEP SEP .....
Toggle OFF .....

RAD1
Antenna Ex .....
Mode LIS(2,3) .....
SUM/SEP SUM .....
Toggle OFF .....

TNR
Antenna ExEy .....
Mode A-32 .....
Sweep ABCDE .....
  
```