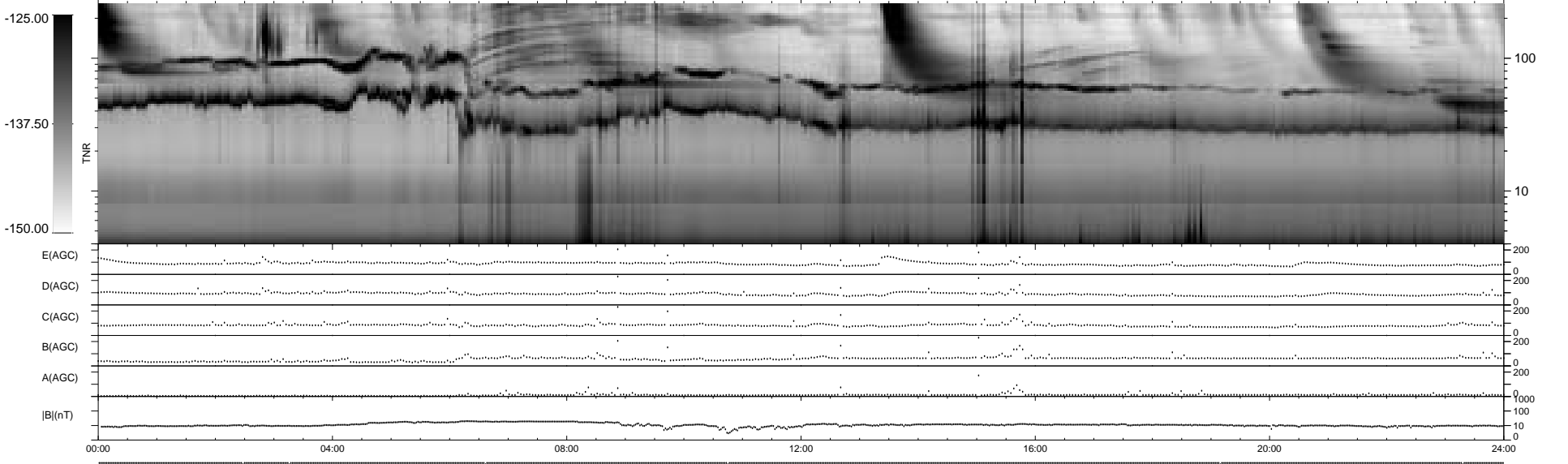
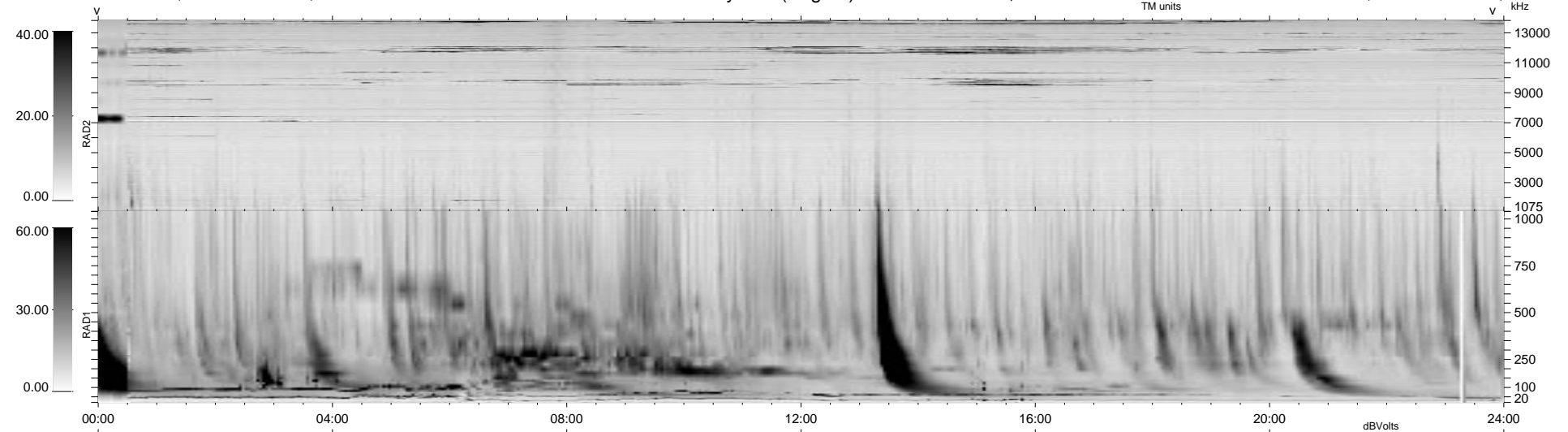


6 bad + 933 good MF/939MF projected (99%) - 0 missing MFs  
 Avg interval = 180 secs  
 Re = 58.88 (46.98, -35.13, -5.00 GSE)

1.7d VMS-SunOS LZ version = v01

### WIND/WAVES Summary Plot (Page 1) for 13-MAY-1999, DOY = 133

DAILY Mon Sep 15, 2008  
 Re = 71.74 (61.83, -35.84, -6.31 GSE)



```

RAD2
Antenna Ey .....
Mode LIN(8) LIN(1) .....
SUM/SEP SEP .....
Toggle OFF .....

RAD1
Antenna Ex .....
Mode LIN(8) LIS(2,8) .....
SUM/SEP SEP SUM .....
Toggle OFF .....

TNR
Antenna ExEy .....
Mode A-32 .....
Sweep ABCDE .....
  
```