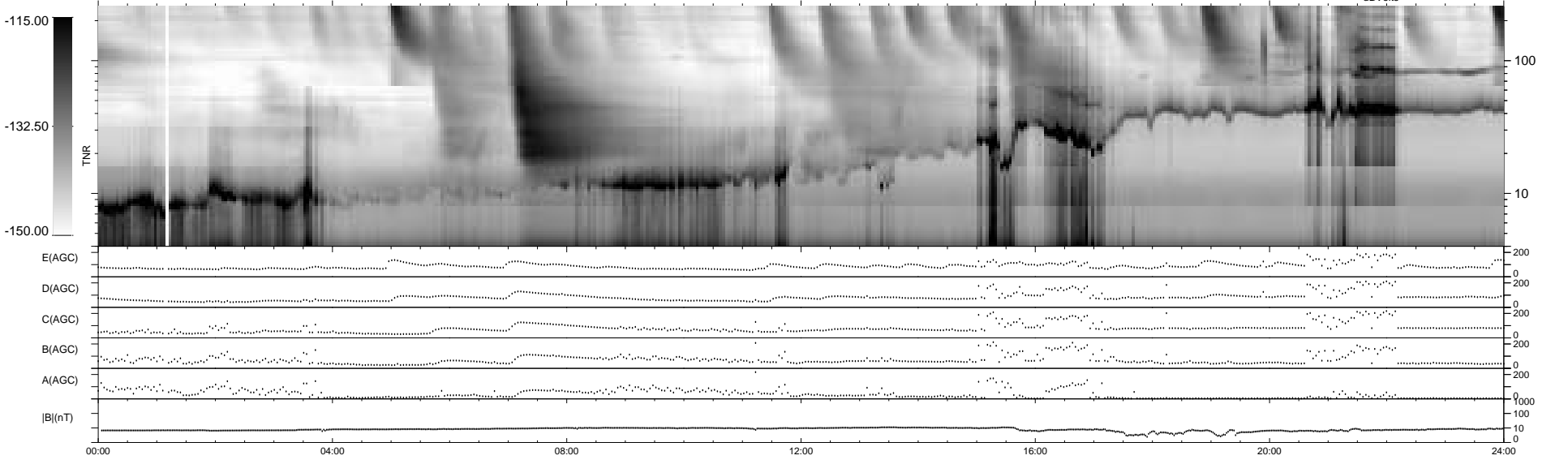
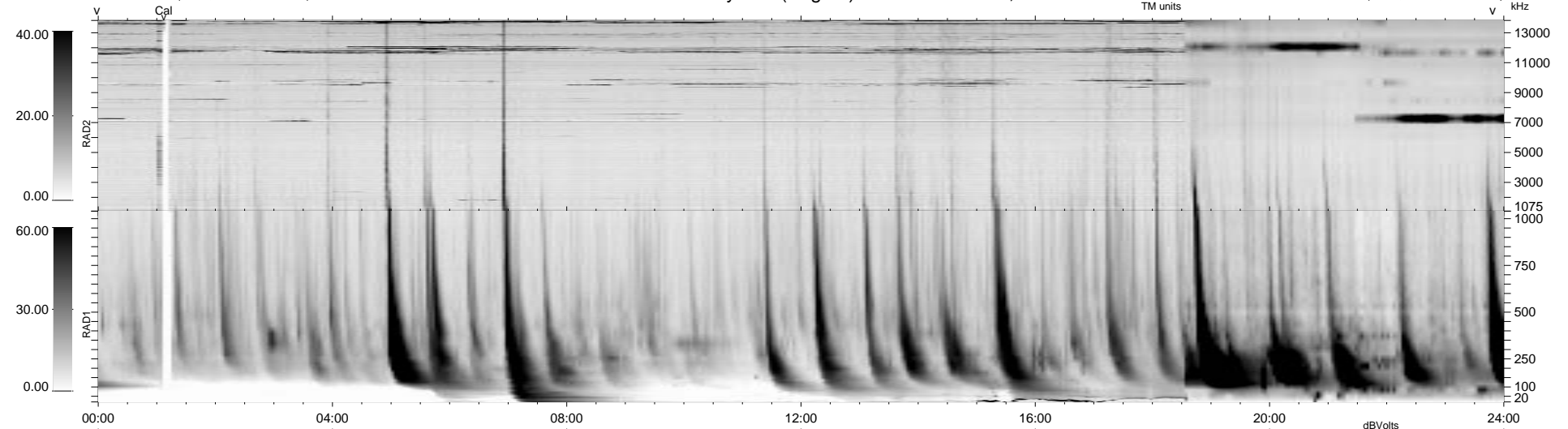


9 bad + 930 good MF/939MF projected (99%) - 0 missing MFs
 Avg interval = 180 secs
 Re = 53.49 (41.70, -33.11, 5.14 GSE)

1.7d VMS-SunOS LZ version = v01
 DAILY Mon Sep 15, 2008
 Re = 58.76 (46.86, -35.10, -4.99 GSE)

WIND/WAVES Summary Plot (Page 1) for 12-MAY-1999, DOY = 132



```

RAD2
Antenna Ey ..... LIN(B)
Mode LIN(1) ..... LIN(B)
SUM/SEP SEP ..... LIN(B)
Toggle OFF ..... LIN(B)

RAD1
Antenna Ex ..... LIN(A)
Mode LIS(2,3) ..... LIN(A)
SUM/SEP SUM ..... SEP
Toggle OFF ..... SEP

TNR
Antenna ExEy .....
Mode A-32 .....
Sweep ABCDE .....
  
```