

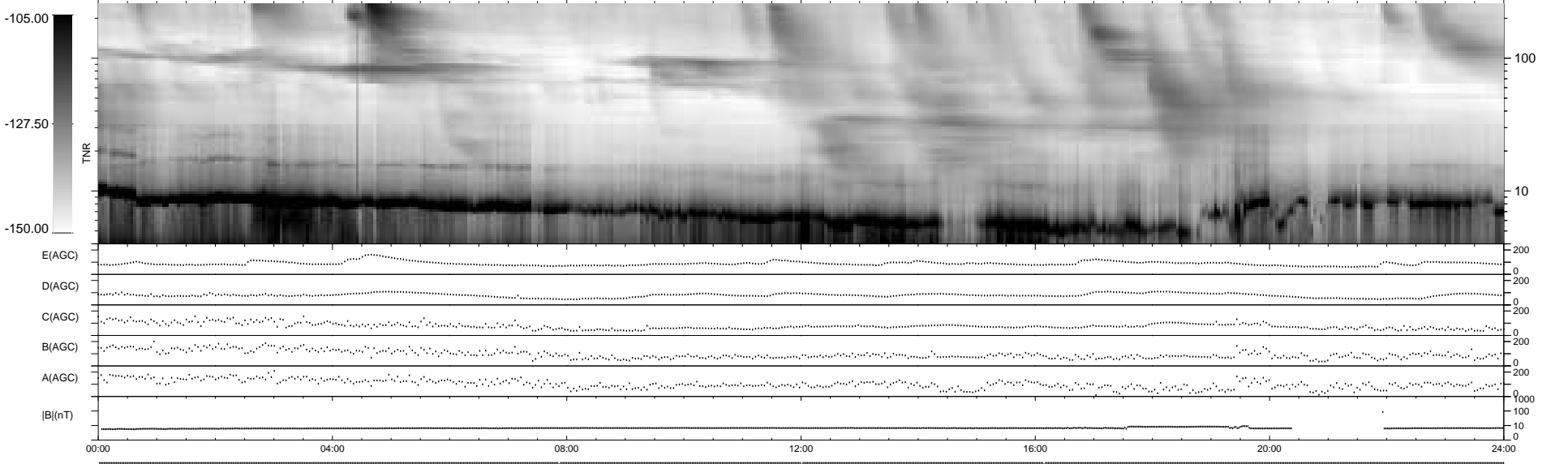
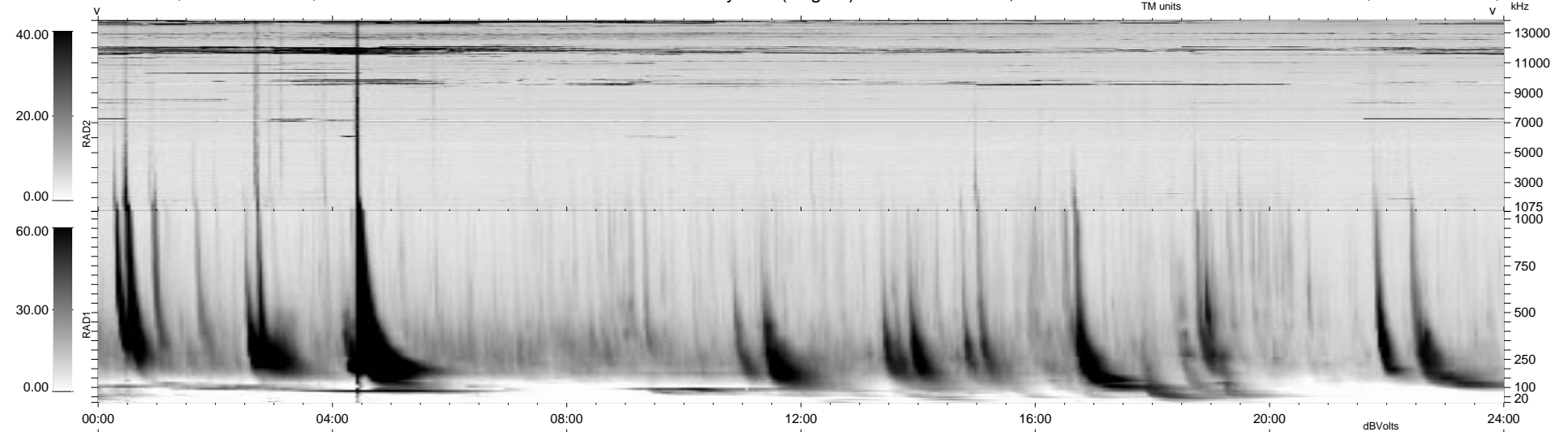
3 bad + 936 good MF/939MF projected (99%) - 0 missing MFs
 Avg interval = 180 secs
 Re = 49.04 (34.98, -31.01, 14.83 GSE)

1.7d VMS-SunOS

LZ version = v01

WIND/WAVES Summary Plot (Page 1) for 11-MAY-1999, DOY = 131

DAILY Mon Sep 15, 2008
 Re = 53.47 (41.66, -33.10, 5.21 GSE)



RAD2
 Antenna Ey
 Mode LIN(1)
 SUM/SEP SEP
 Toggle OFF

RAD1
 Antenna Ex
 Mode LIS(2,3)
 SUM/SEP SUM
 Toggle OFF

TNR
 Antenna ExEy
 Mode A-32
 Sweep ABCDE