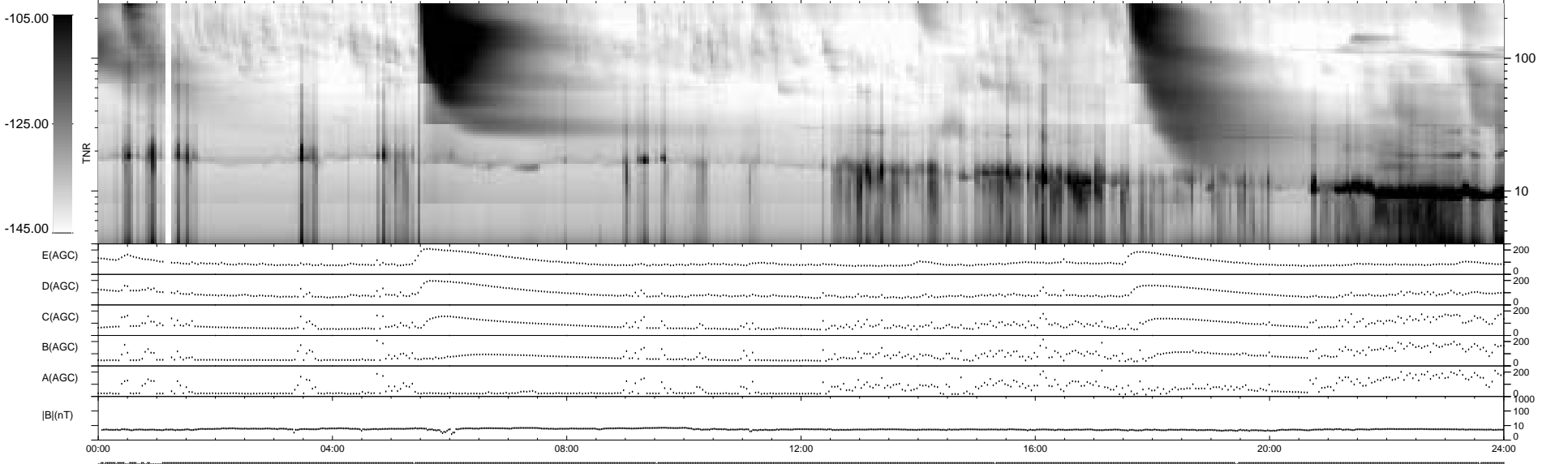
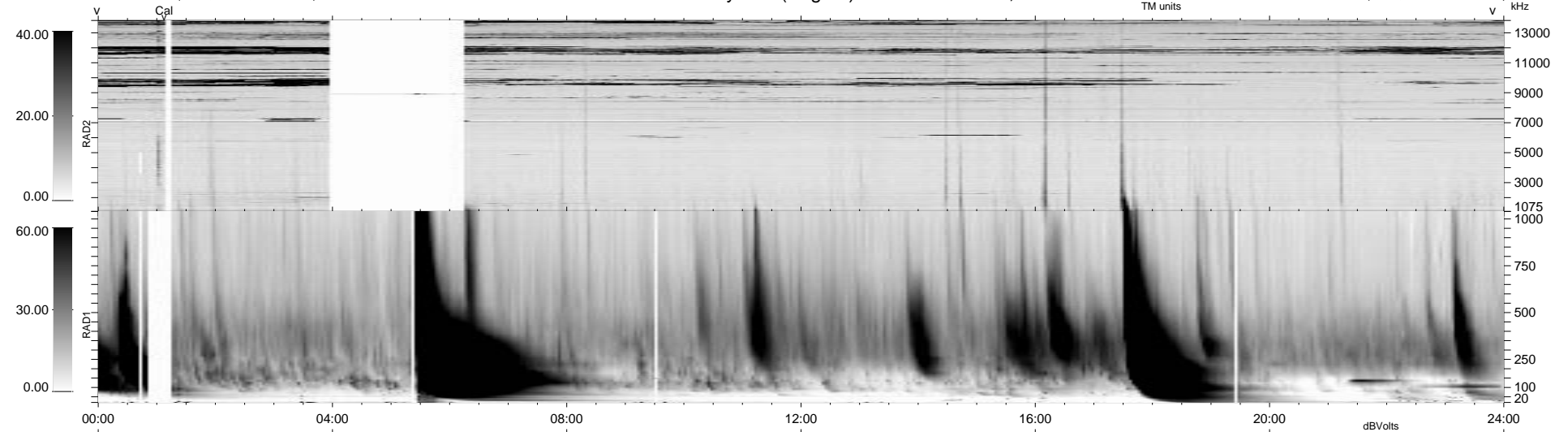


26 bad + 914 good MF/940MF projected (97%) - 0 missing MFs
 Avg interval = 180 secs
 Re = 42.71 (24.70, -26.28, 22.88 GSE)

1.7d VMS-SunOS LZ version = v01
 DAILY Mon Sep 15, 2008
 Re = 49.01 (34.92, -30.99, 14.89 GSE)

WIND/WAVES Summary Plot (Page 1) for 10-MAY-1999, DOY = 130



E(AGC) 0 200
 D(AGC) 0 200
 C(AGC) 0 200
 B(AGC) 0 200
 A(AGC) 0 200
 |B|(nT) 0 1000
 0 10 0

00:00 04:00 08:00 12:00 16:00 20:00 24:00

RAD2
 Antenna Ey
 Mode LIN(1) FIX(152) LIN(1)
 SUM/SEP SEP
 Toggle OFF

RAD1
 Antenna Ex
 Mode LIS(2,3)
 SUM/SEP SUM
 Toggle OFF

TNR
 Antenna ExEy
 Mode A-32
 Sweep ABCDE