

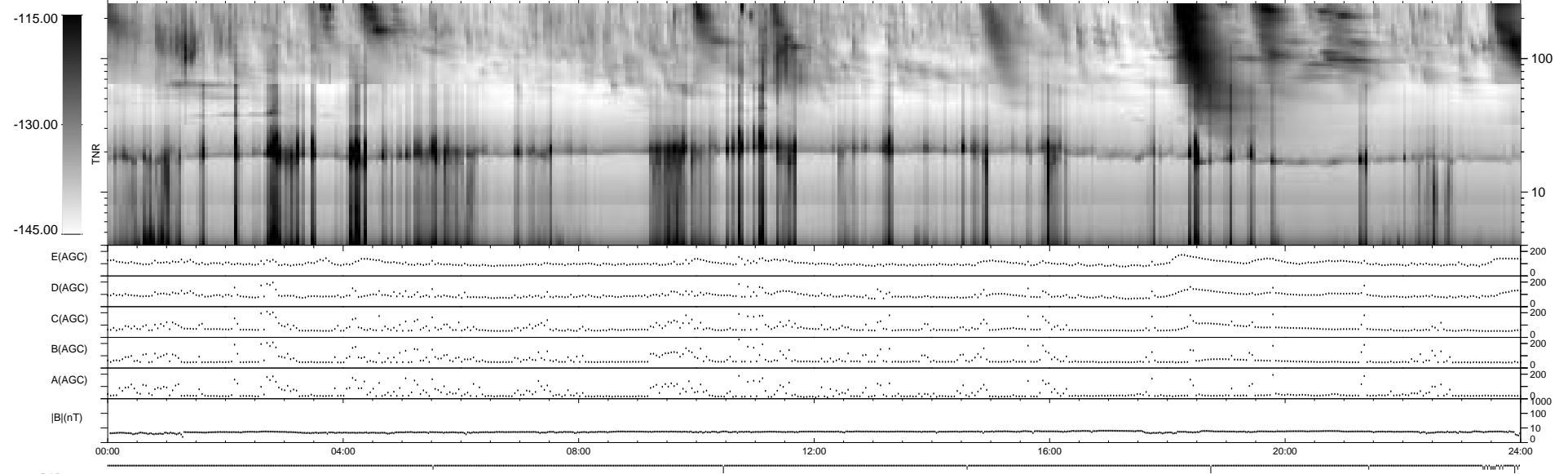
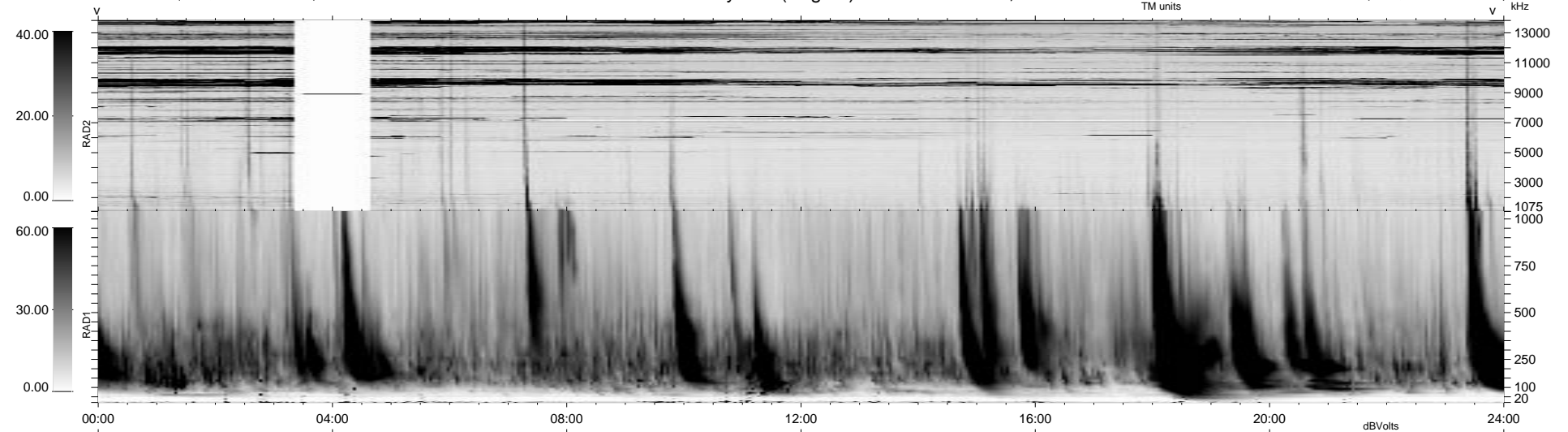
16 bad + 923 good MF/939MF projected (98%) - 0 missing MFs
 Avg interval = 180 secs
 Re = - 34.43 (10.62, -18.08, 27.31 GSE)

1.7d VMS-SunOS

LZ version = v01

WIND/WAVES Summary Plot (Page 1) for 09-MAY-1999, DOY = 129

DAILY Mon Sep 15, 2008
 Re = 42.66 (24.61, -26.23, 22.93 GSE)



```

RAD2
Antenna Ey ..... EIX(15Z) ..... LIN(1) .....
Mode LIN(1) .....
SUM/SEP SEP .....
Toggle OFF .....

RAD1
Antenna Ex .....
Mode LIS(2,3) .....
SUM/SEP SUM .....
Toggle OFF .....

TNR
Antenna ExEy .....
Mode A-32 .....
Sweep ABCDE .....
  
```