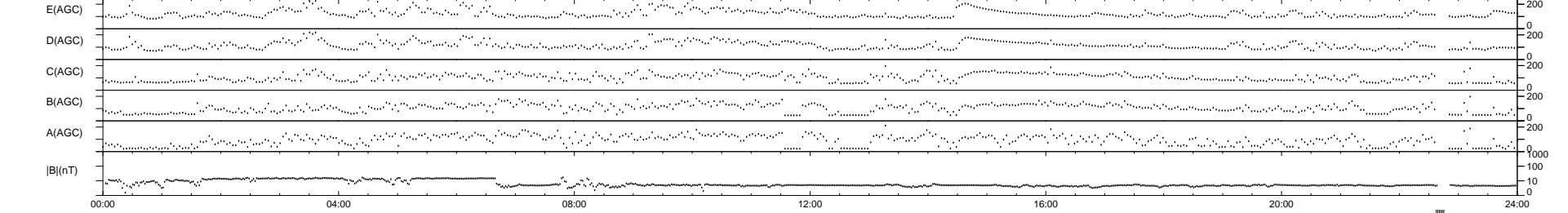
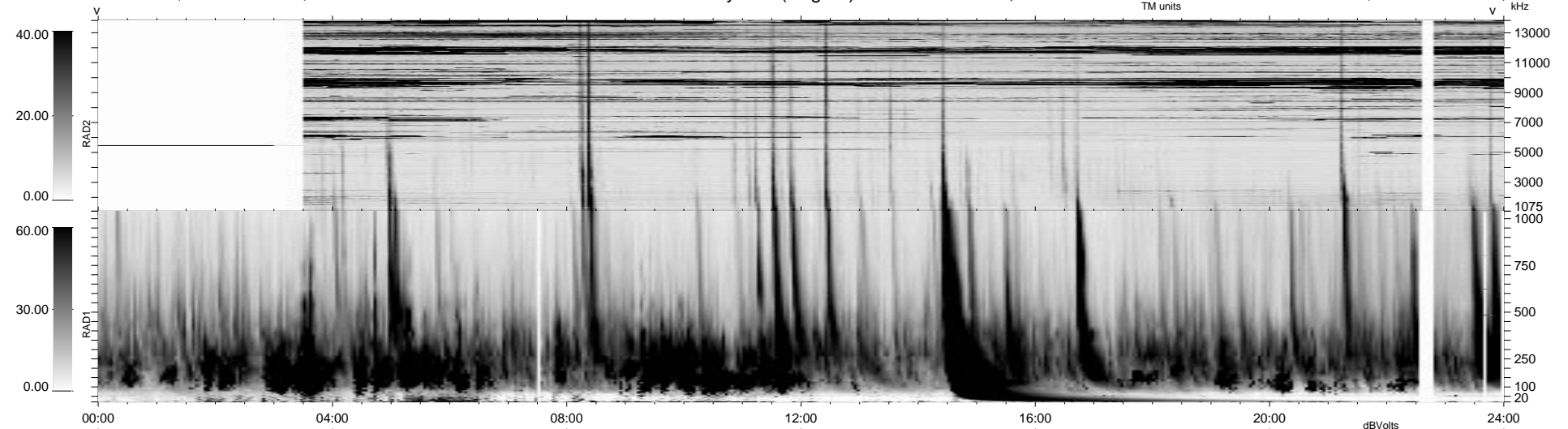


11 bad + 922 good MF/939MF projected (98%) - 6 missing MFs
 Avg interval = 180 secs
 Re = 24.98 (-6.31, -5.46, 23.55 GSE)

1.7d VMS-SunOS LZ version = v01

WIND/WAVES Summary Plot (Page 1) for 08-MAY-1999, DOY = 128

DAILY Mon Sep 15, 2008
 Re = 34.37 (10.51, -18.01, 27.32 GSE)



RAD2
 Antenna Ey LIN(1).
 Mode FIX(88)
 SUM/SEP SEP
 Toggle OFF

RAD1
 Antenna Ex
 Mode LIS(2.8)
 SUM/SEP SUM
 Toggle OFF

TNR
 Antenna ExEy
 Mode A-32
 Sweep ABCDE