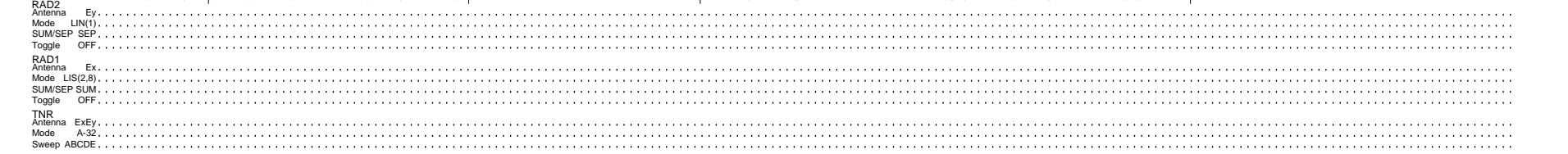
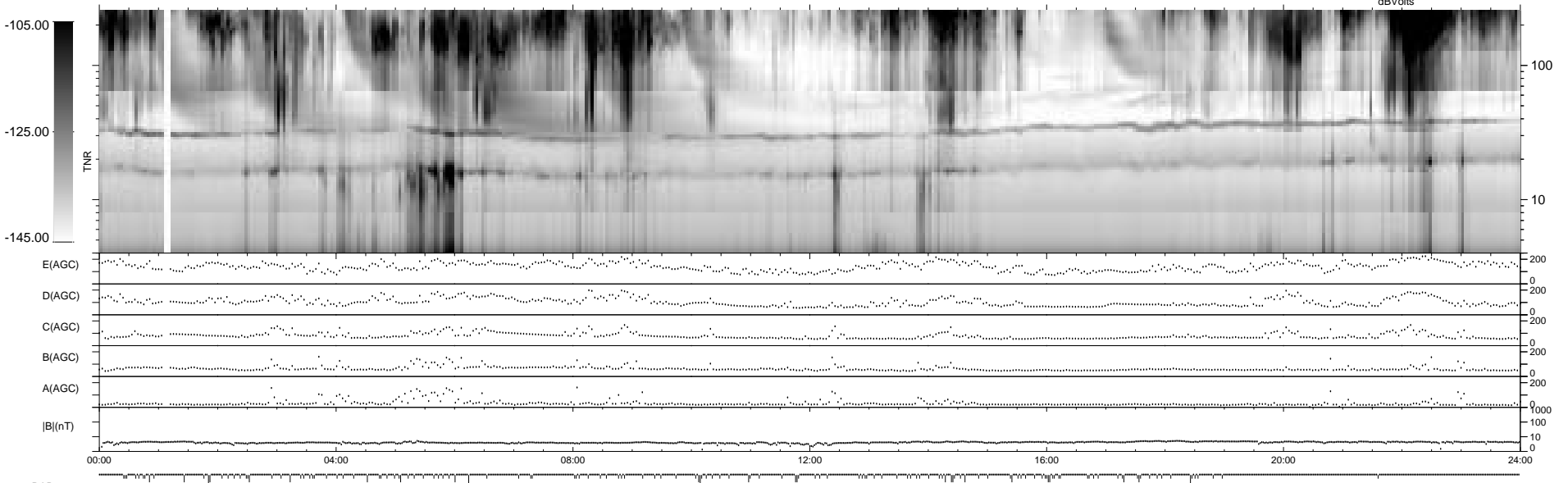
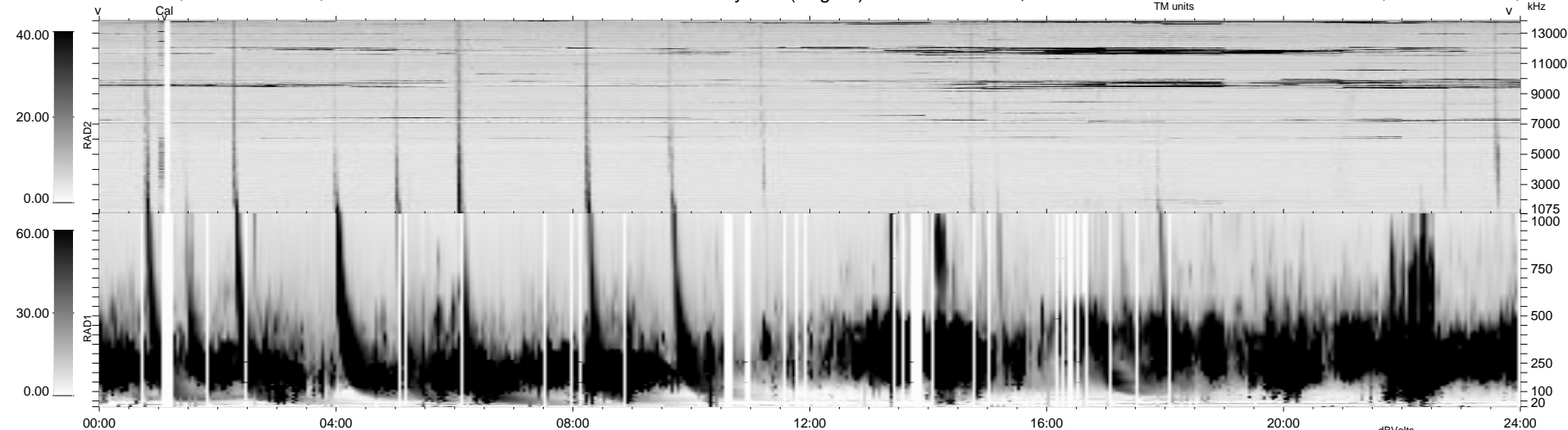


141 bad + 798 good MF/939MF projected (84%) - 0 missing MFs  
 Avg interval = 180 secs  
 Re = 53.97 (43.77, -10.39, -29.82 GSE)

1.7d VMS-SunOS LZ version = v01

WIND/WAVES Summary Plot (Page 1) for 02-MAY-1999, DOY = 122

DAILY Mon Sep 15, 2008  
 Re = 49.66 (34.95, -4.76, -34.95 GSE)



RAD2  
 Antenna Ey  
 Mode LIN(1)  
 SUM/SEP SEP  
 Toggle OFF

RAD1  
 Antenna Ex  
 Mode LIS(2,3)  
 SUM/SEP SUM  
 Toggle OFF

TNR  
 Antenna ExEy  
 Mode A-32  
 Sweep ABCDE