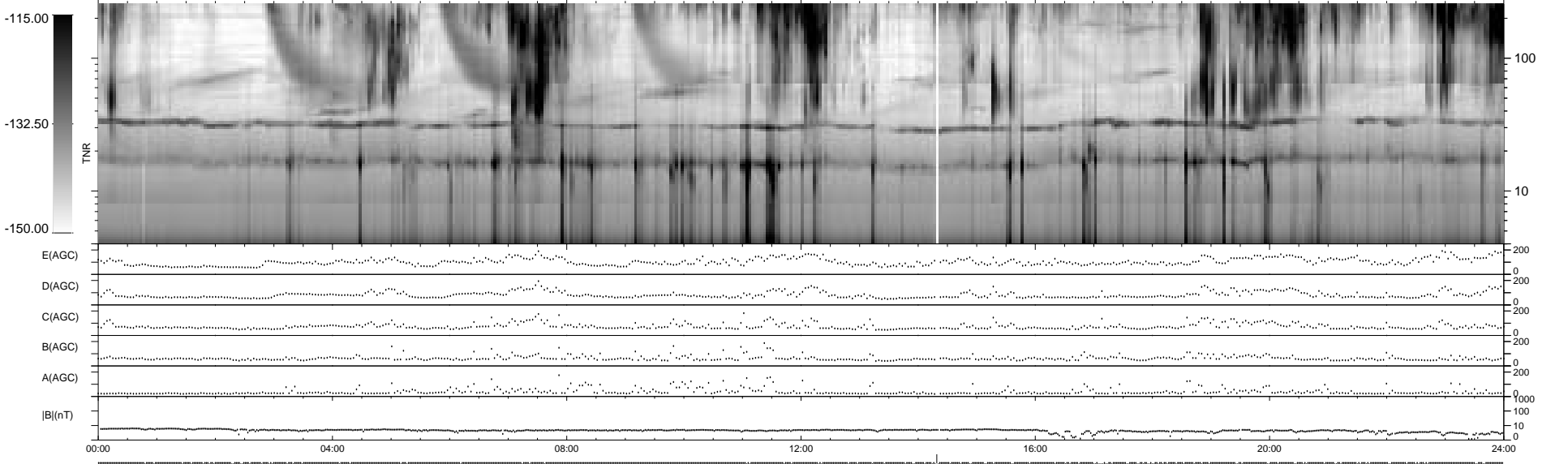
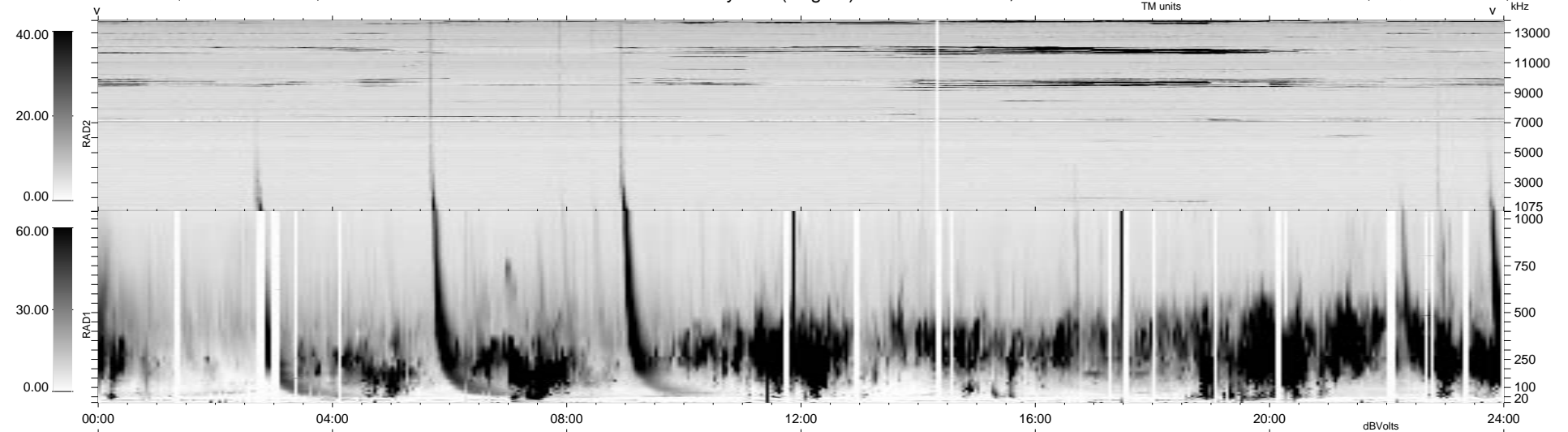


112 bad + 826 good MF/939MF projected (87%) - 1 missing MF
 Avg interval = 180 secs
 Re = 56.57 (49.69, -15.05, -22.45 GSE)

1.7d VMS-SunOS LZ version = v01
 DAILY Mon Sep 15, 2008
 Re = 53.99 (43.82, -10.42, -29.78 GSE)

WIND/WAVES Summary Plot (Page 1) for 01-MAY-1999, DOY = 121



RAD2
 Antenna Ey
 Mode LIN(1)
 SUM/SEP SEP
 Toggle OFF

RAD1
 Antenna Ex
 Mode LIS(2,3)
 SUM/SEP SUM
 Toggle OFF

TNR
 Antenna ExEy
 Mode A-32
 Sweep ABCDE