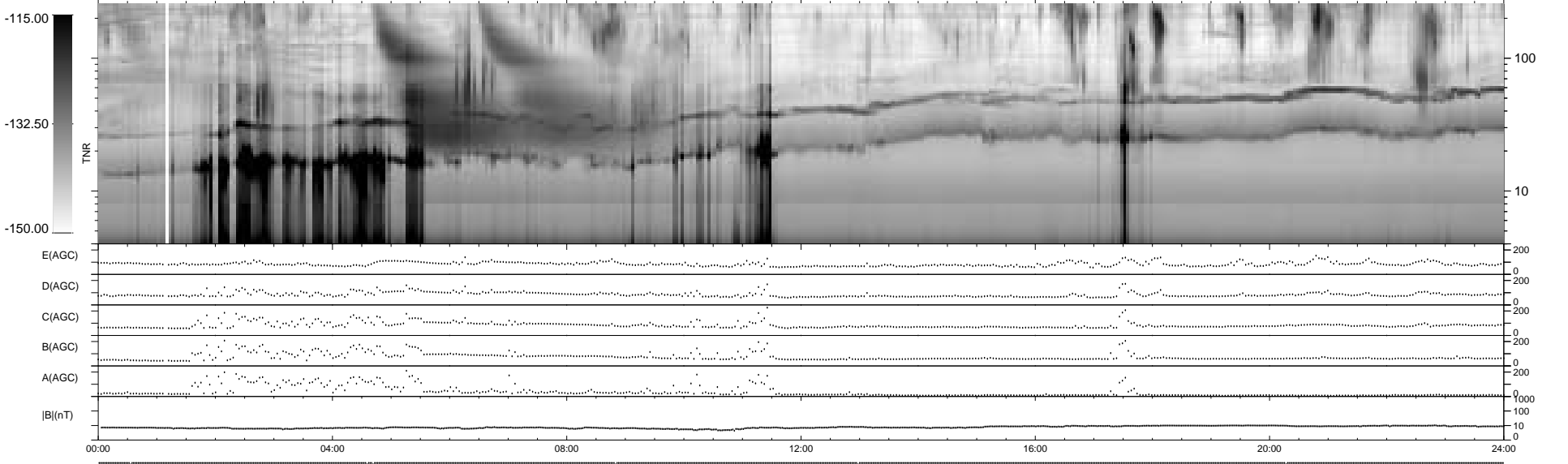
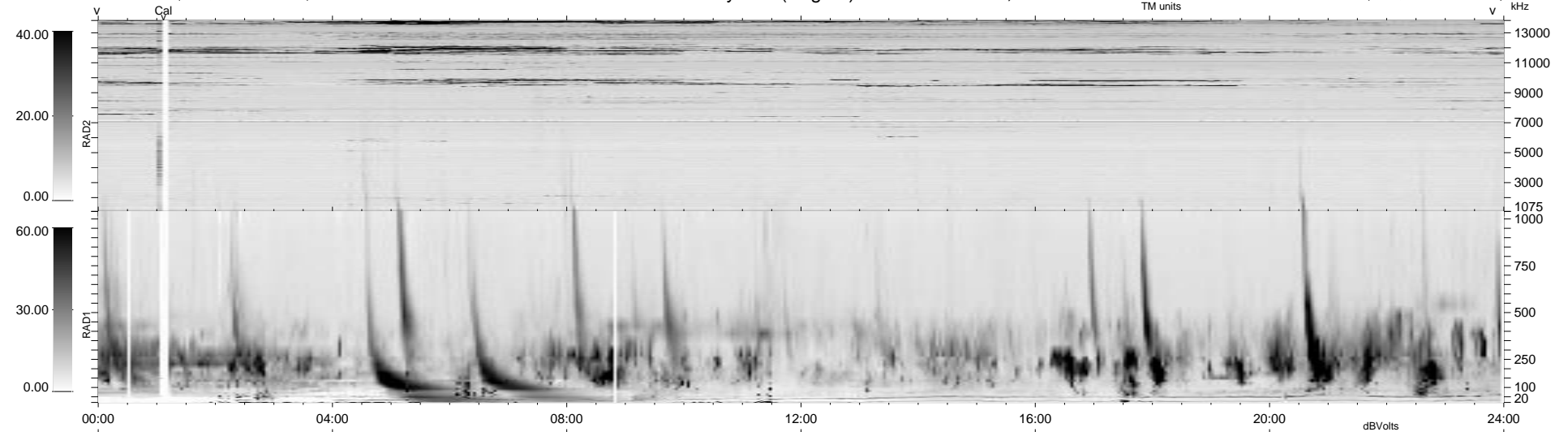


6 bad + 933 good MF/939MF projected (99%) - 0 missing MFs
 Avg interval = 180 secs
 Re = 54.48 (49.44, -22.13, 5.87 GSE)

1.7d VMS-SunOS LZ version = v01

WIND/WAVES Summary Plot (Page 1) for 28-APR-1999, DOY = 118

DAILY Mon Sep 15, 2008
 Re = 56.81 (52.63, -21.01, -3.94 GSE)



RAD2
 Antenna Ey
 Mode LIN(1)
 SUM/SEP SEP
 Toggle OFF
 RAD1
 Antenna Ex
 Mode LIS(2,3)
 SUM/SEP SUM
 Toggle OFF
 TNR
 Antenna ExEy
 Mode A-32
 Sweep ABCDE