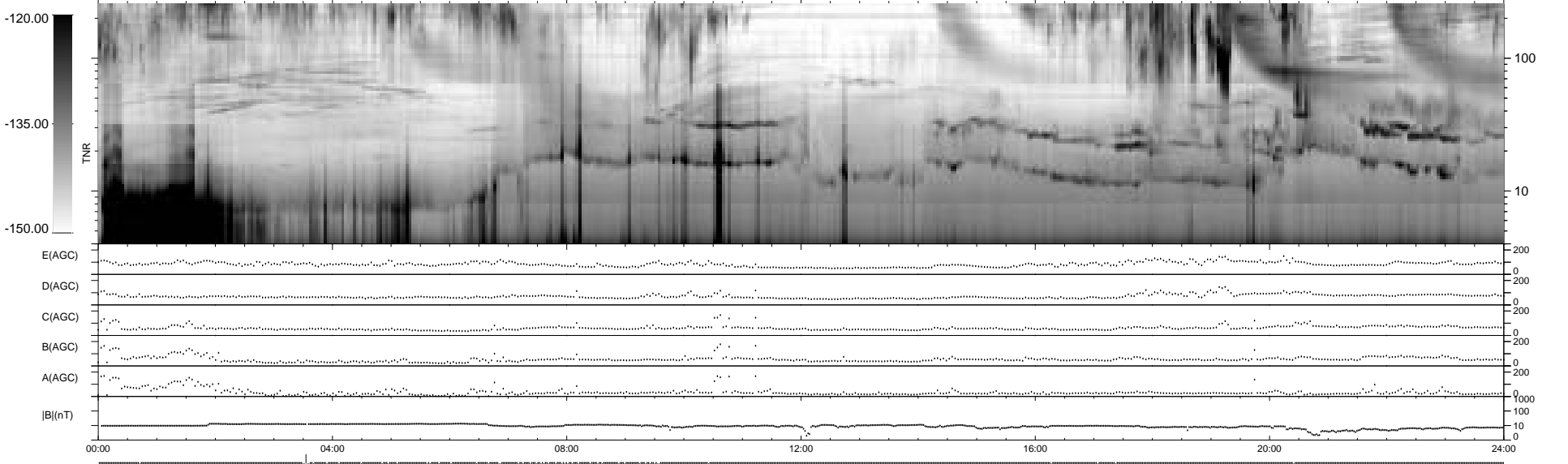
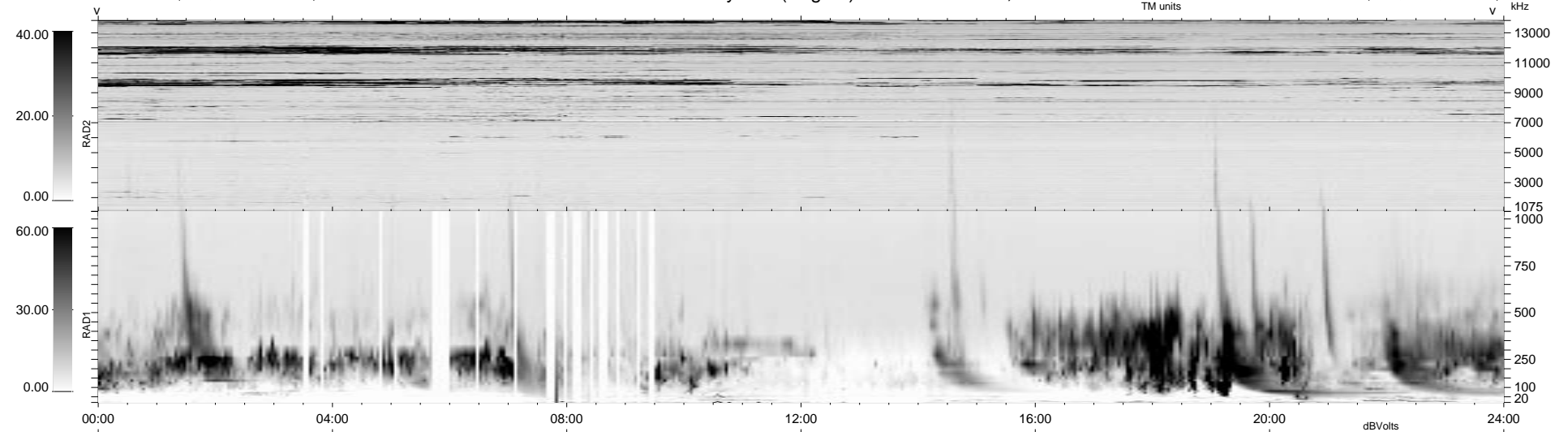


49 bad + 889 good MF/939MF projected (94%) - 1 missing MF
 Avg interval = 180 secs
 Re = - 50.44 (42.80, -21.86, 15.30 GSE)

1.7d VMS-SunOS LZ version = v01
 DAILY Mon Sep 15, 2008
 Re = 54.46 (49.41, -22.13, 5.93 GSE)

WIND/WAVES Summary Plot (Page 1) for 27-APR-1999, DOY = 117



E(AGC) 0 200
 D(AGC) 0 200
 C(AGC) 0 200
 B(AGC) 0 200
 A(AGC) 0 200
 |B|(nT) 0 1000
 0 10 0

00:00 04:00 08:00 12:00 16:00 20:00 24:00

RAD2
 Antenna Ey
 Mode LIN(1)
 SUM/SEP SEP
 Toggle OFF
 RAD1
 Antenna Ex
 Mode LIS(2,3)
 SUM/SEP SUM
 Toggle OFF
 TNR
 Antenna ExEy
 Mode A-32
 Sweep ABCDE