

5 bad + 934 good MF/939MF projected (99%) - 0 missing MFs  
 Avg interval = 180 secs  
 Re = 27.51 (-0.91, -8.62, 26.10 GSE)

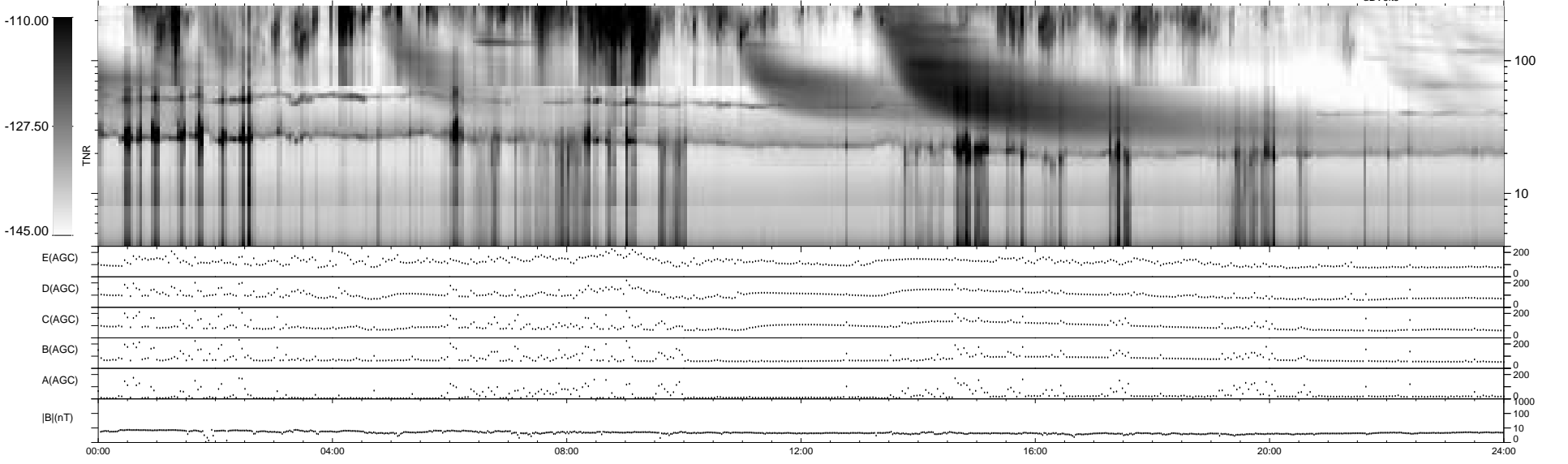
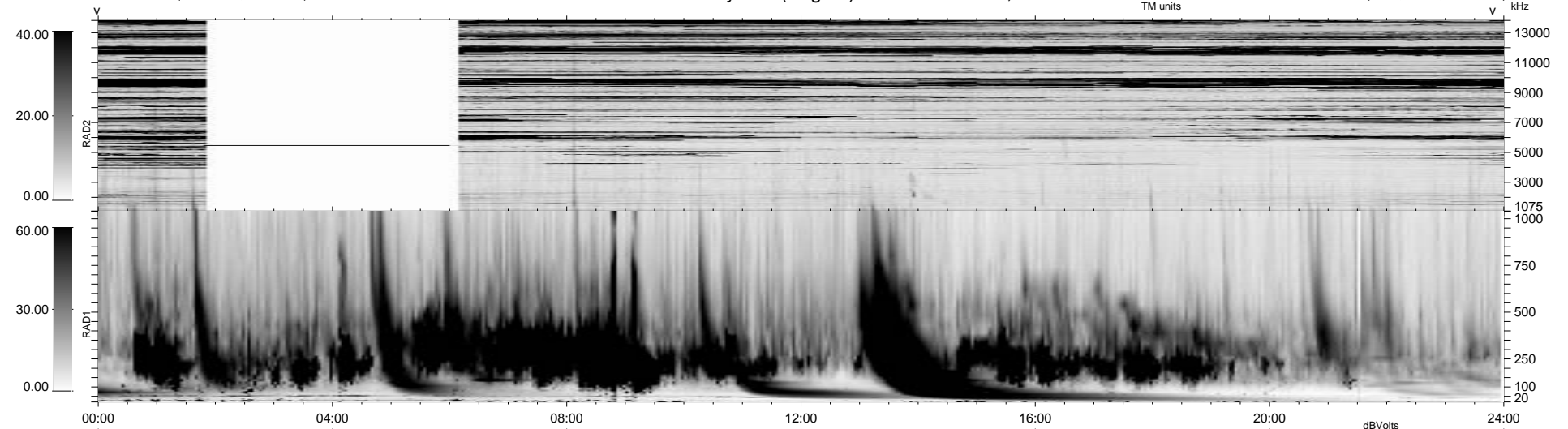
1.7d VMS-SunOS

LZ version = v01

WIND/WAVES Summary Plot (Page 1) for 24-APR-1999, DOY = 114

DAILY Mon Sep 15, 2008

Re = 36.74 (17.57, -15.77, 28.15 GSE)



RAD2  
 Antenna Ey ..... LIN(1) ..... FIX(88) ..... LIN(1) .....  
 Mode LIN(1) .....  
 SUM/SEP SEP .....  
 Toggle OFF .....  
 RAD1  
 Antenna Ex .....  
 Mode LIS(2,3) .....  
 SUM/SEP SUM .....  
 Toggle OFF .....  
 TNR  
 Antenna ExEy .....  
 Mode A-32 .....  
 Sweep ABCDE .....