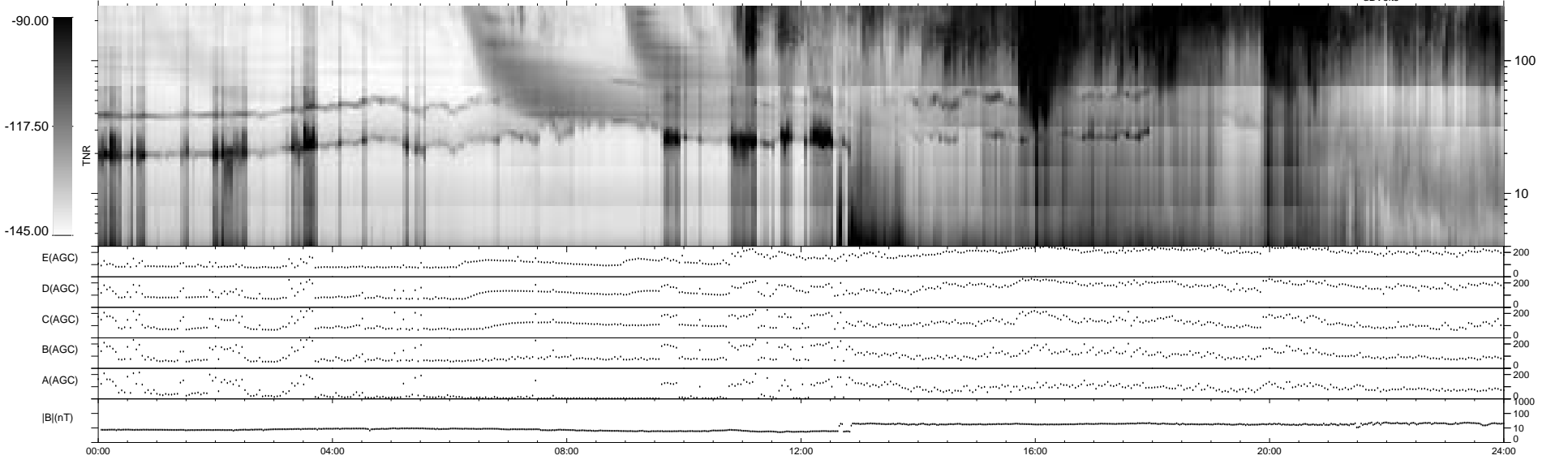
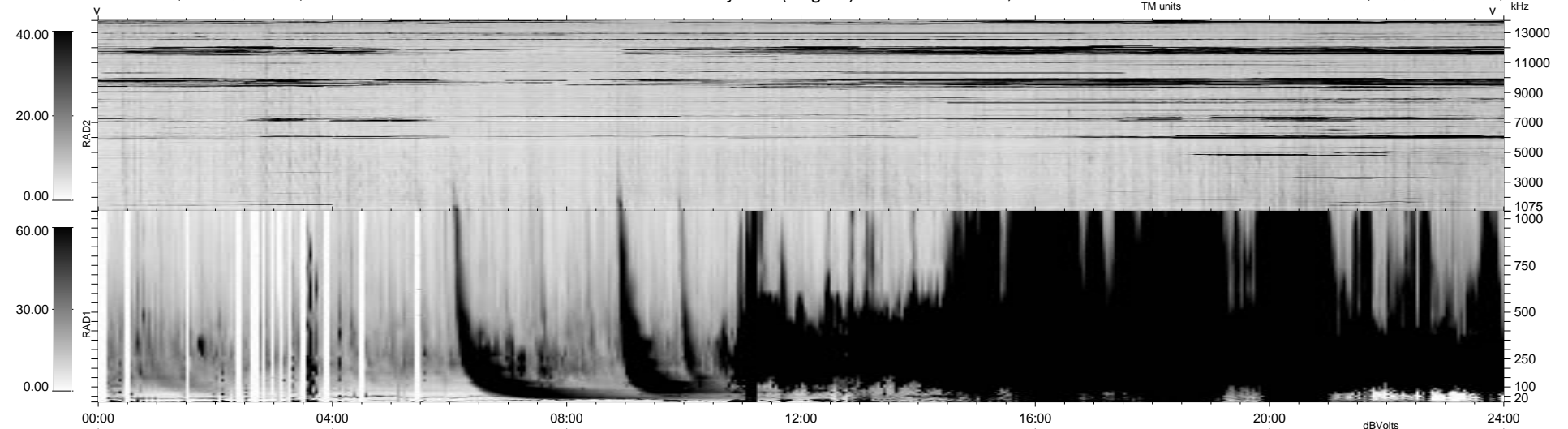


86 bad + 853 good MF/939MF projected (90%) - 0 missing MFs
 Avg interval = 180 secs
 Re = 32.64 (2.88, 9.66, -31.05 GSE)

1.7d VMS-SunOS LZ version = v01

WIND/WAVES Summary Plot (Page 1) for 21-APR-1999, DOY = 111

DAILY Mon Sep 15, 2008
 Re = 23.44 (-13.87, 9.53, -16.31 GSE)



RAD2
 Antenna Ey
 Mode LIN(1)
 SUM/SEP SEP
 Toggle OFF
 RAD1
 Antenna
 Mode
 SUM/SEP
 Toggle
 TNR
 Antenna ExEy
 Mode A-32
 Sweep ABCDE