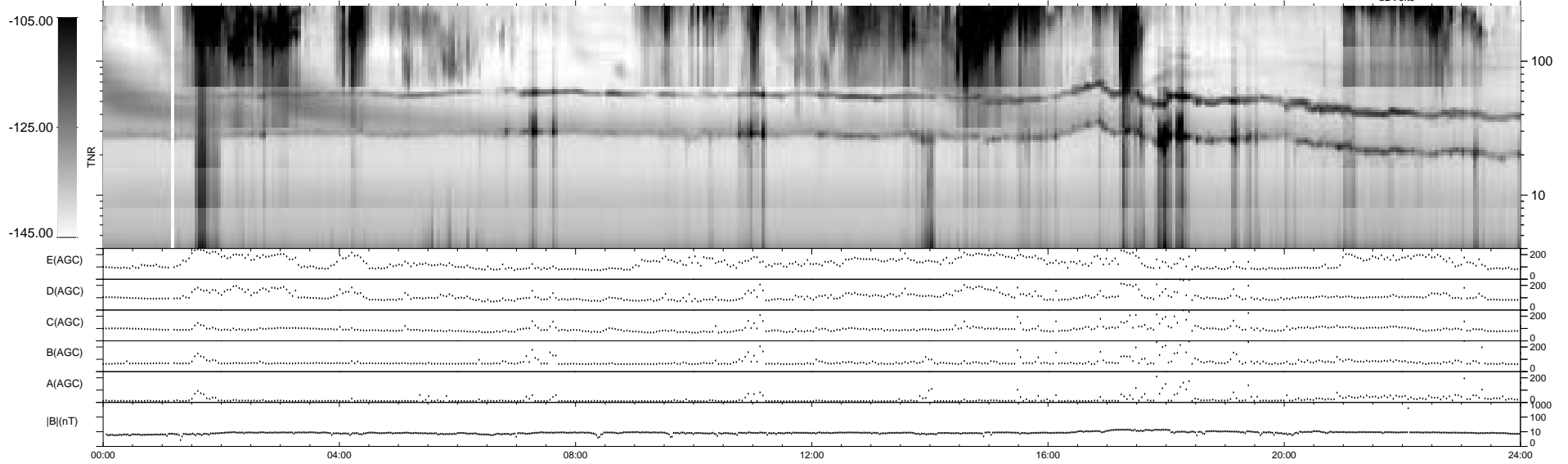
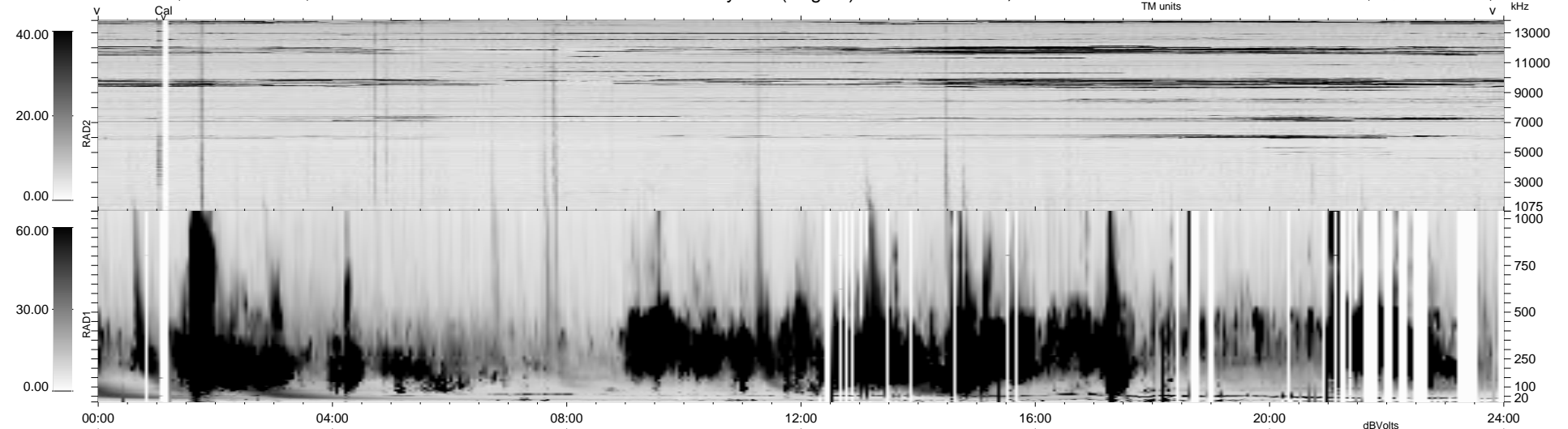


137 bad + 802 good MF/939MF projected (85%) - 0 missing MFs  
 Avg interval = 180 secs  
 Re = - 41.19 (19.68, 6.91, -35.51 GSE)

1.7d VMS-SunOS LZ version = v01

WIND/WAVES Summary Plot (Page 1) for 20-APR-1999, DOY = 110

DAILY Mon Sep 15, 2008  
 Re = 32.71 (3.00, 9.64, -31.11 GSE)



RAD2  
 Antenna Ey .....  
 Mode LIN(1) .....  
 SUM/SEP SEP .....  
 Toggle OFF .....  
 RAD1  
 Antenna Ex .....  
 Mode LIS(2,3) .....  
 SUM/SEP SUM .....  
 Toggle OFF .....  
 TNR  
 Antenna ExEy .....  
 Mode A-32 .....  
 Sweep ABCDE .....