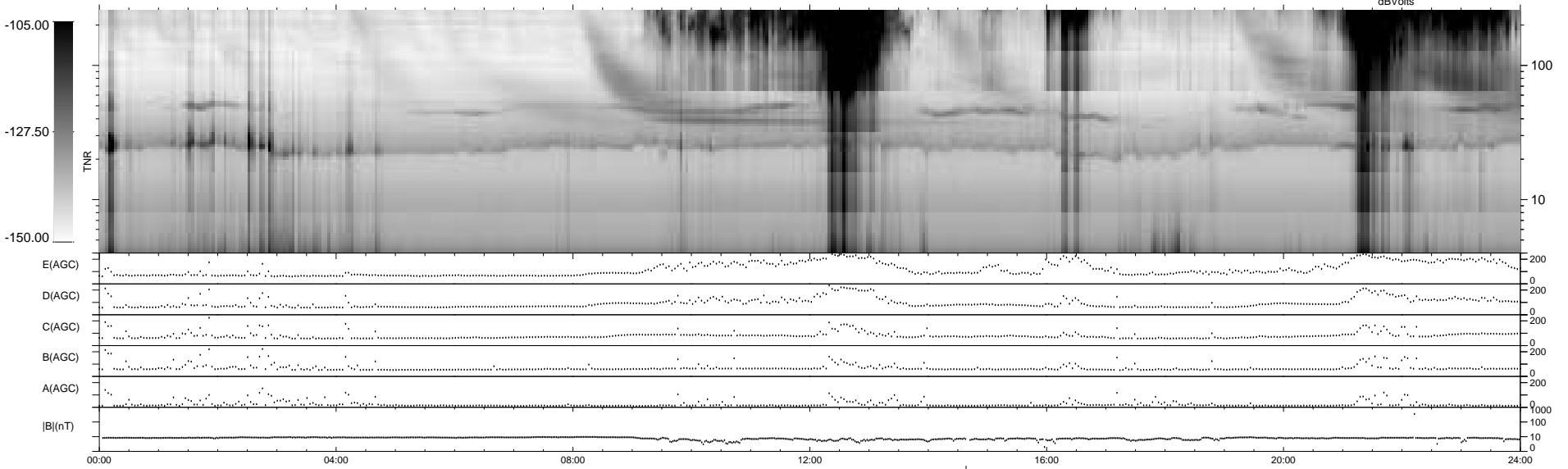
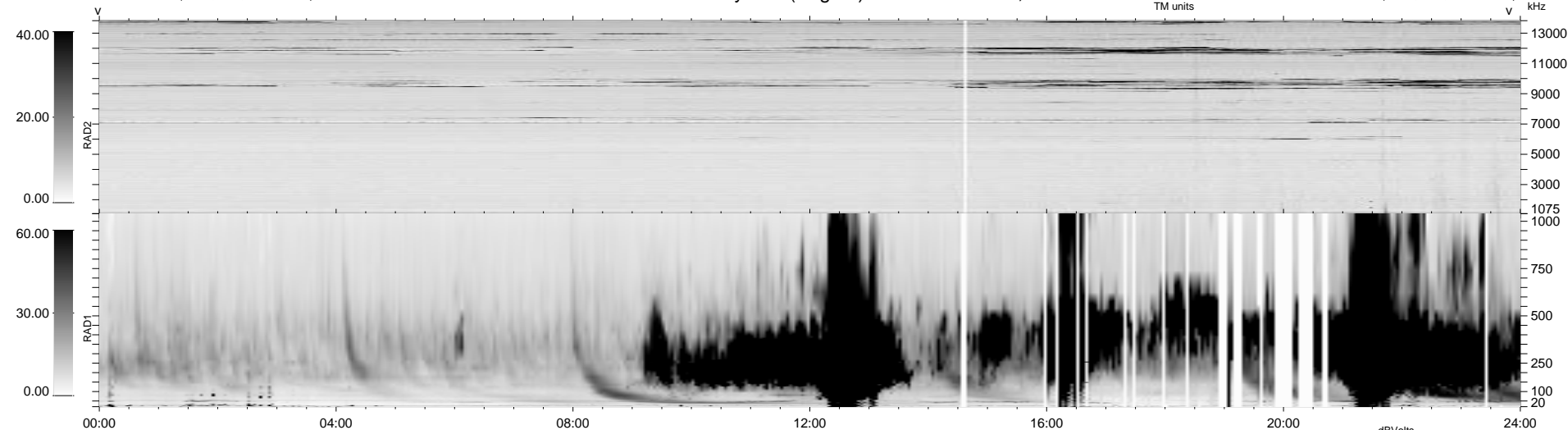


107 bad + 831 good MF/939MF projected (88%) - 1 missing MF
 Avg interval = 180 secs
 Re = 47.82 (33.51, 3.46, -33.93 GSE)

1.7d VMS-SunOS LZ version = v01

WIND/WAVES Summary Plot (Page 1) for 19-APR-1999, DOY = 109

DAILY Mon Sep 15, 2008
 Re = 41.24 (19.79, 6.89, -35.52 GSE)



```

RAD2
Antenna Ey .....
Mode LIN(1) .....
SUM/SEP SEP .....
Toggle OFF .....

RAD1
Antenna Ex .....
Mode LIS(2,3) .....
SUM/SEP SUM .....
Toggle OFF .....

TNR
Antenna ExEy .....
Mode A-32 .....
Sweep ABCDE .....
  
```