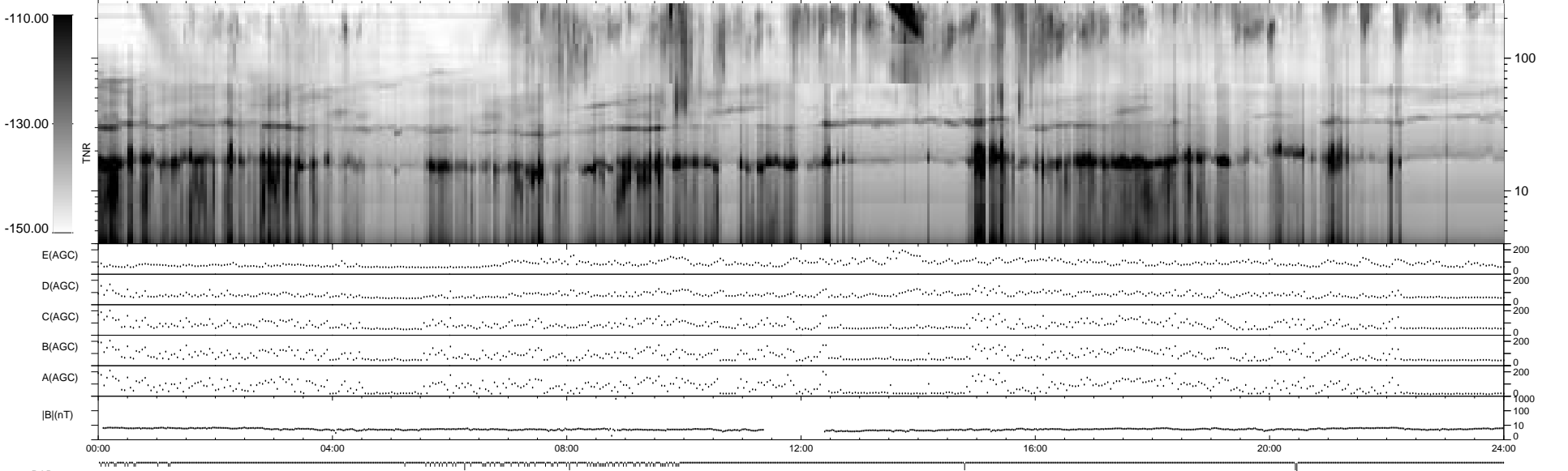
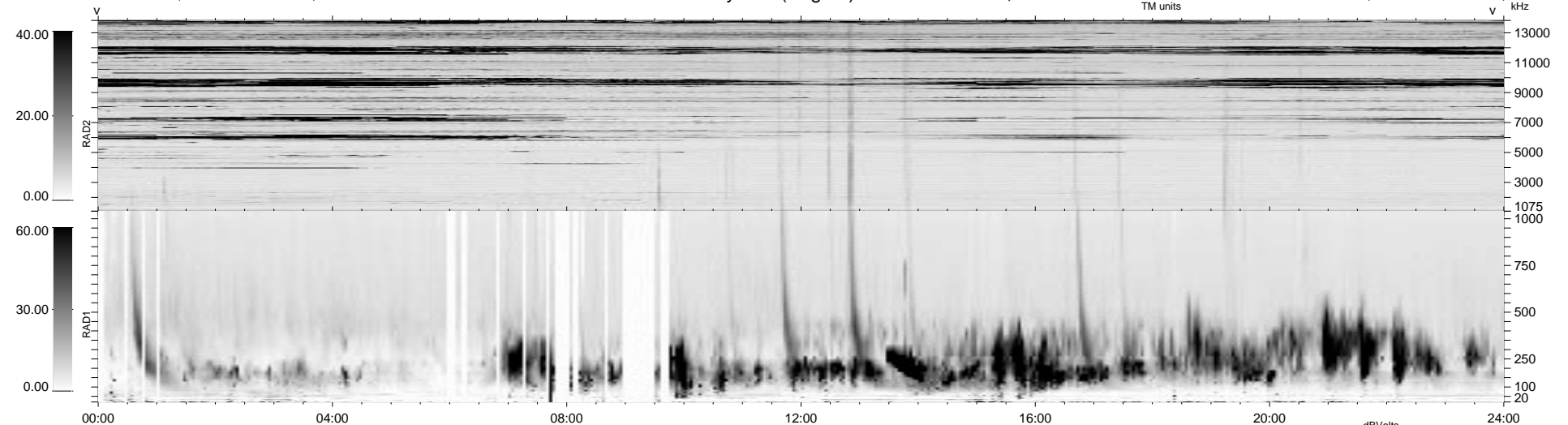


80 bad + 859 good MF/939MF projected (91%) - 0 missing MFs
 Avg interval = 180 secs
 Re = 58.99 (27.91, -25.50, 45.29 GSE)

1.7d VMS-SunOS LZ version = v01
 DAILY Mon Sep 15, 2008
 Re = 58.11 (38.52, -22.60, 37.17 GSE)

WIND/WAVES Summary Plot (Page 1) for 11-APR-1999, DOY = 101



RAD2 Antenna Ey
 Mode LIN(1)
 SUM/SEP SEP
 Toggle OFF
 RAD1 Antenna
 Mode
 SUM/SEP
 Toggle
 TNR Antenna ExEy
 Mode A-32
 Sweep ABCDE