

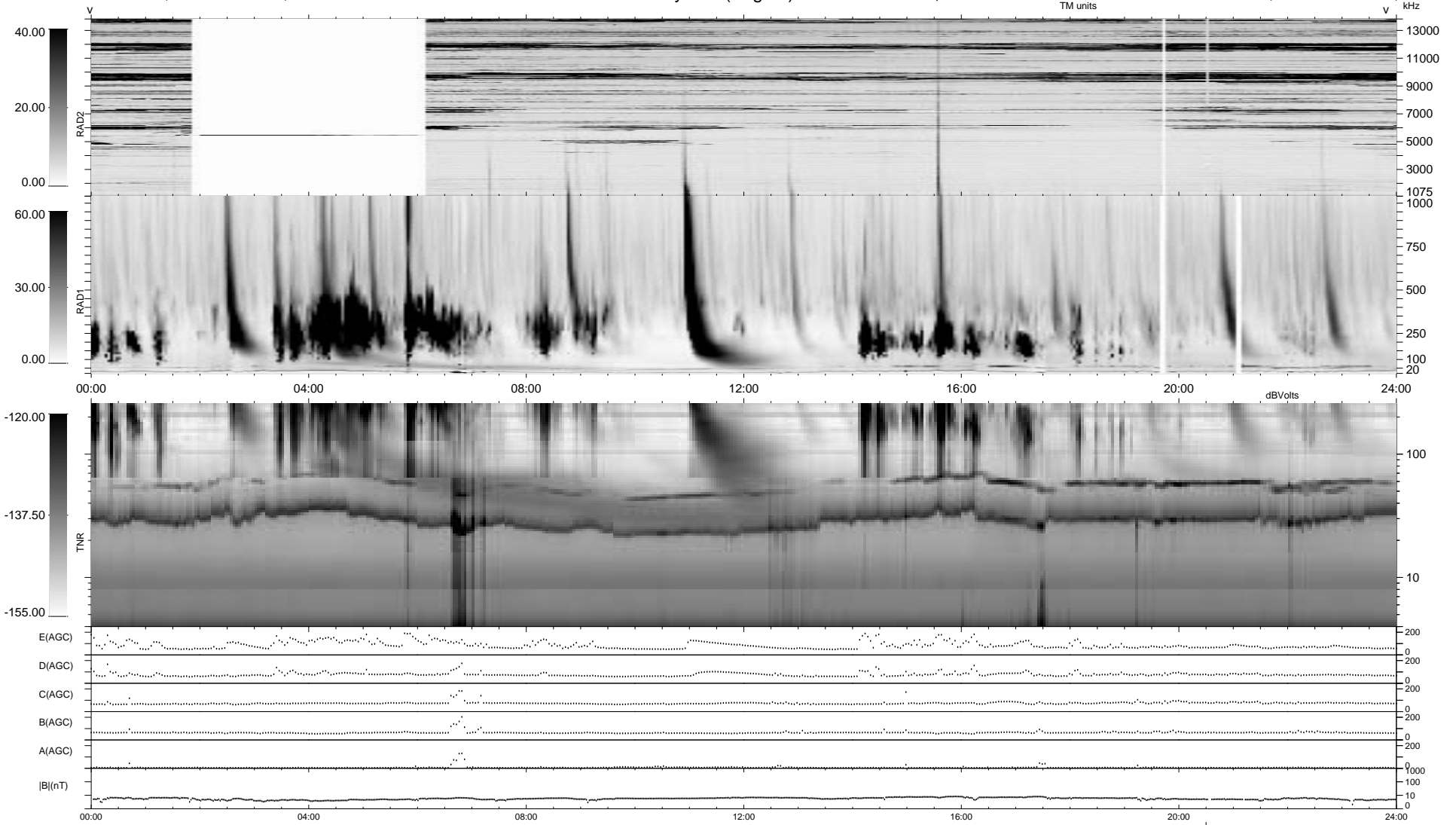
14 bad + 924 good MF/939MF projected (98%) - 1 missing MF
 Avg interval = 180 secs
 Re = 60.79 (2.81, -28.24, 53.75 GSE)

1.7d VMS-SunOS

LZ version = v01

WIND/WAVES Summary Plot (Page 1) for 09-APR-1999, DOY = 99

DAILY Mon Sep 15, 2008
 Re = 59.91 (15.67, -27.40, 50.92 GSE)



RAD2
 Antenna Ey LIN(1) FIX(88) LIN(1)
 Mode LIN(1)
 SUM/SEP SEP
 Toggle OFF
 RAD1
 Antenna Ex
 Mode LIS(2,3)
 SUM/SEP SUM
 Toggle OFF
 TNR
 Antenna ExEy
 Mode A-32
 Sweep ABCDE