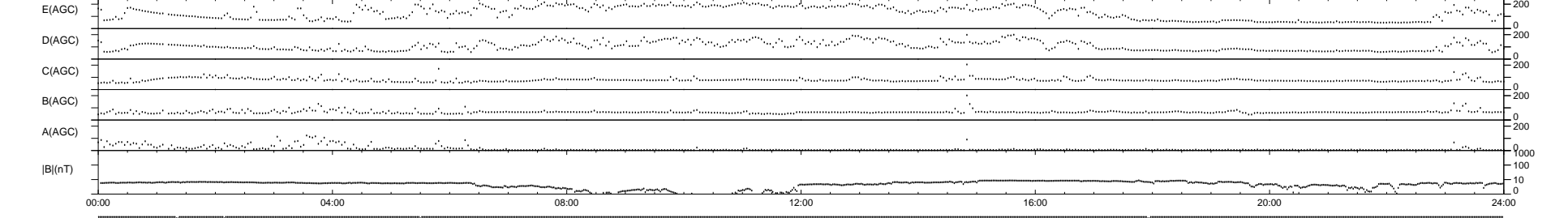
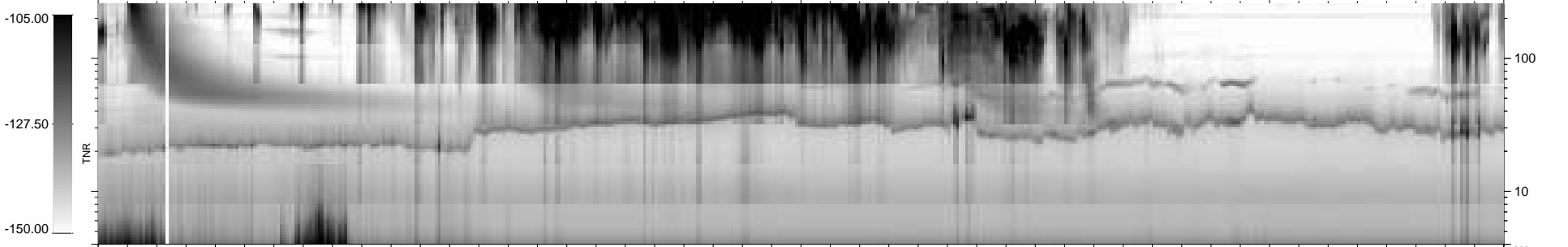
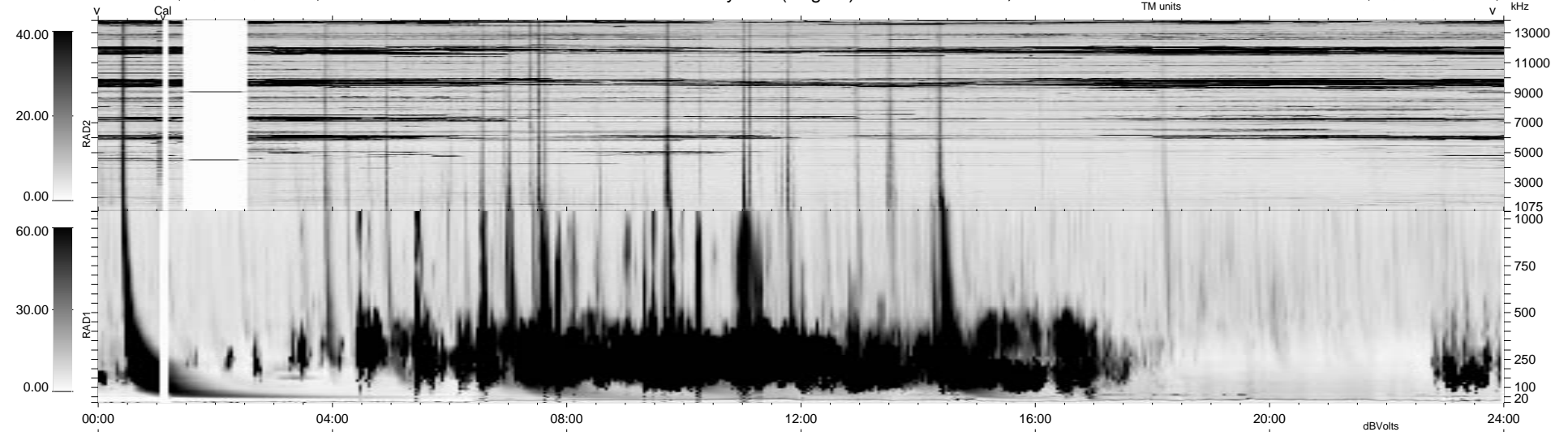


6 bad + 933 good MF/939MF projected (99%) - 0 missing MFs
 Avg interval = 180 secs
 Re = 61.58 (-10.27, -28.09, 53.83 GSE)

1.7d VMS-SunOS LZ version = v01

WIND/WAVES Summary Plot (Page 1) for 08-APR-1999, DOY = 98

DAILY Mon Sep 15, 2008
 Re = 60.79 (2.72, -28.25, 53.76 GSE)



RAD2
 Antenna Ey
 Mode LIN(1) LIS(6,11) LIN(1)
 SUM/SEP SEP
 Toggle OFF
 RAD1
 Antenna Ex
 Mode LIS(2,3)
 SUM/SEP SUM
 Toggle OFF
 TNR
 Antenna ExEy
 Mode A-32
 Sweep ABCDE