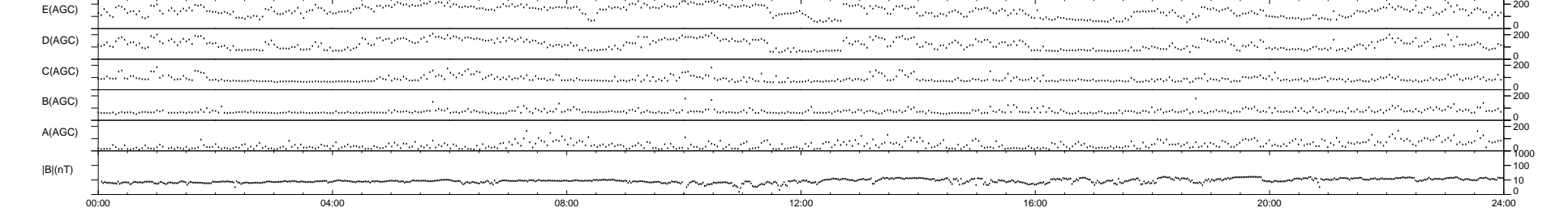
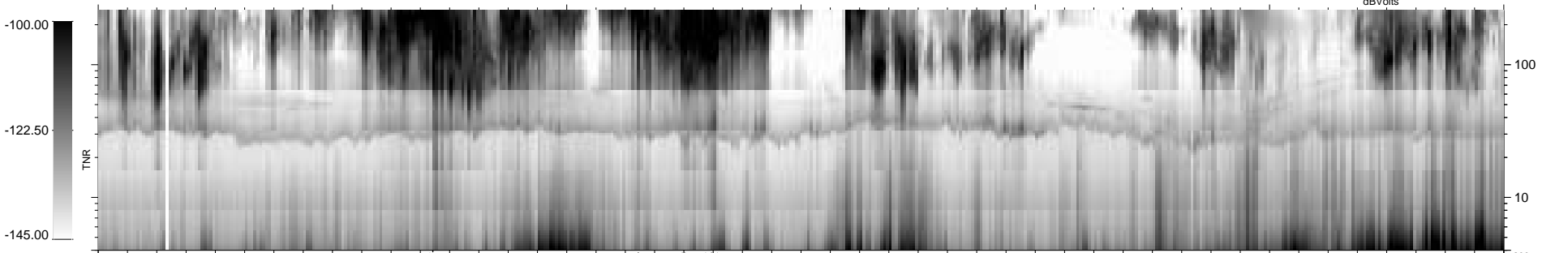
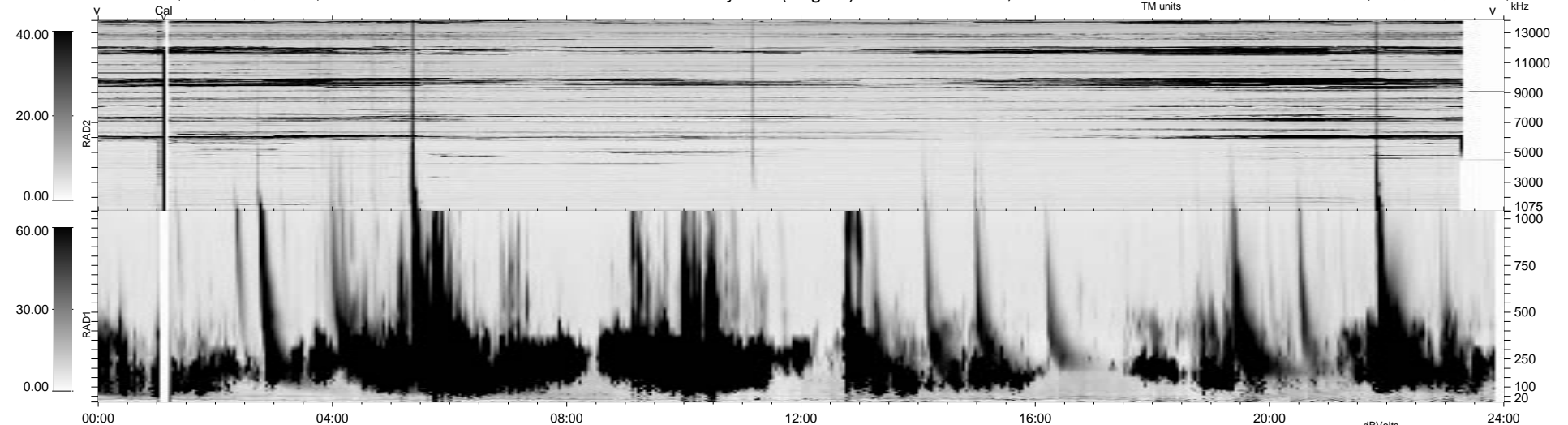


11 bad + 928 good MF/939MF projected (98%) - 0 missing MFs
 Avg interval = 180 secs
 Re = 63.34 (-52.68, -18.85, 29.69 GSE)

1.7d VMS-SunOS LZ version = v01
 DAILY Mon Sep 15, 2008
 Re = 63.11 (-44.54, -22.25, 38.79 GSE)

WIND/WAVES Summary Plot (Page 1) for 04-APR-1999, DOY = 94



RAD2
 Antenna Ey LIS(8.14)
 Mode LIN(1)
 SUM/SEP SEP
 Toggle OFF

RAD1
 Antenna Ex
 Mode LIS(2.8)
 SUM/SEP SUM
 Toggle OFF

TNR
 Antenna ExEy
 Mode A-32
 Sweep ABCDE