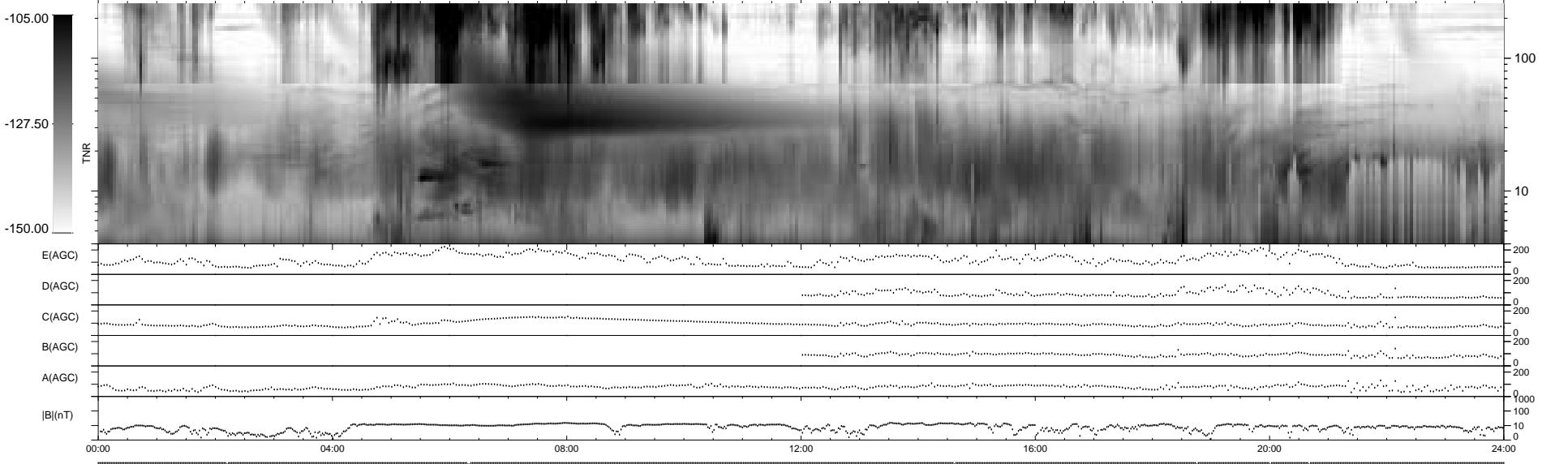
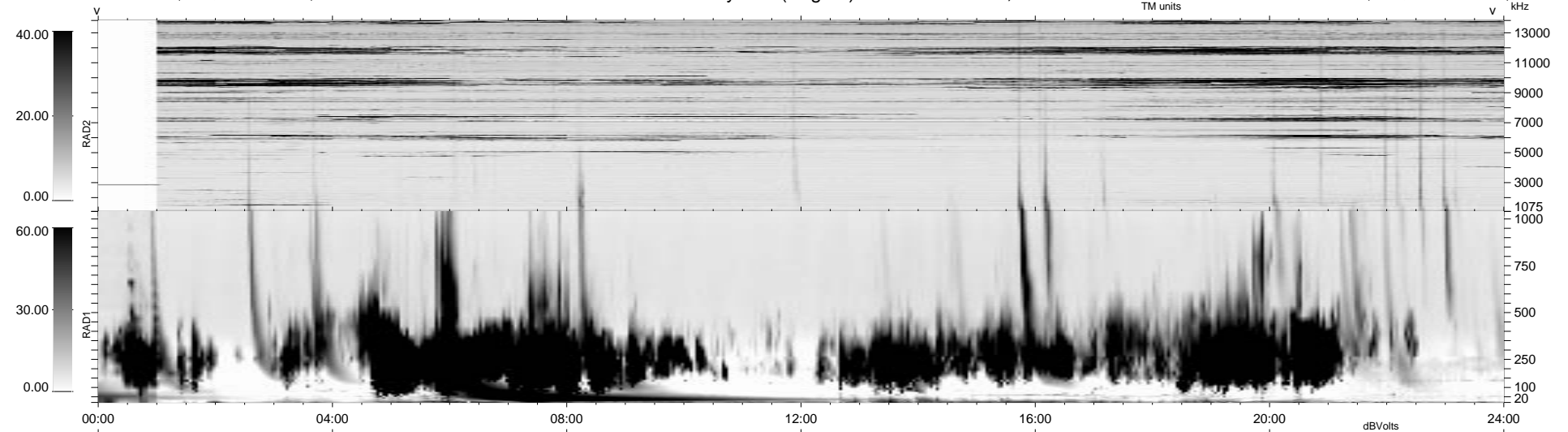


7 bad + 933 good MF/940MF projected (99%) - 0 missing MFs
 Avg interval = 180 secs
 Re = 63.45 (-62.12, -10.98, 6.85 GSE)

1.7d VMS-SunOS LZ version = v01
 DAILY Mon Sep 15, 2008
 Re = 63.45 (-58.69, -14.89, 18.96 GSE)

WIND/WAVES Summary Plot (Page 1) for 02-APR-1999, DOY = 92



RAD2
 Antenna Ey LIN(J)
 Mode LIS(8.8) LIN(J)
 SUM/SEP SUM SEP
 Toggle OFF

RAD1
 Antenna Ex LIN(2.8)
 Mode LIN(8) SUM
 SUM/SEP SEP SUM
 Toggle OFF

TNR
 Antenna ExEy
 Mode A-32
 Sweep ACE ABCDE