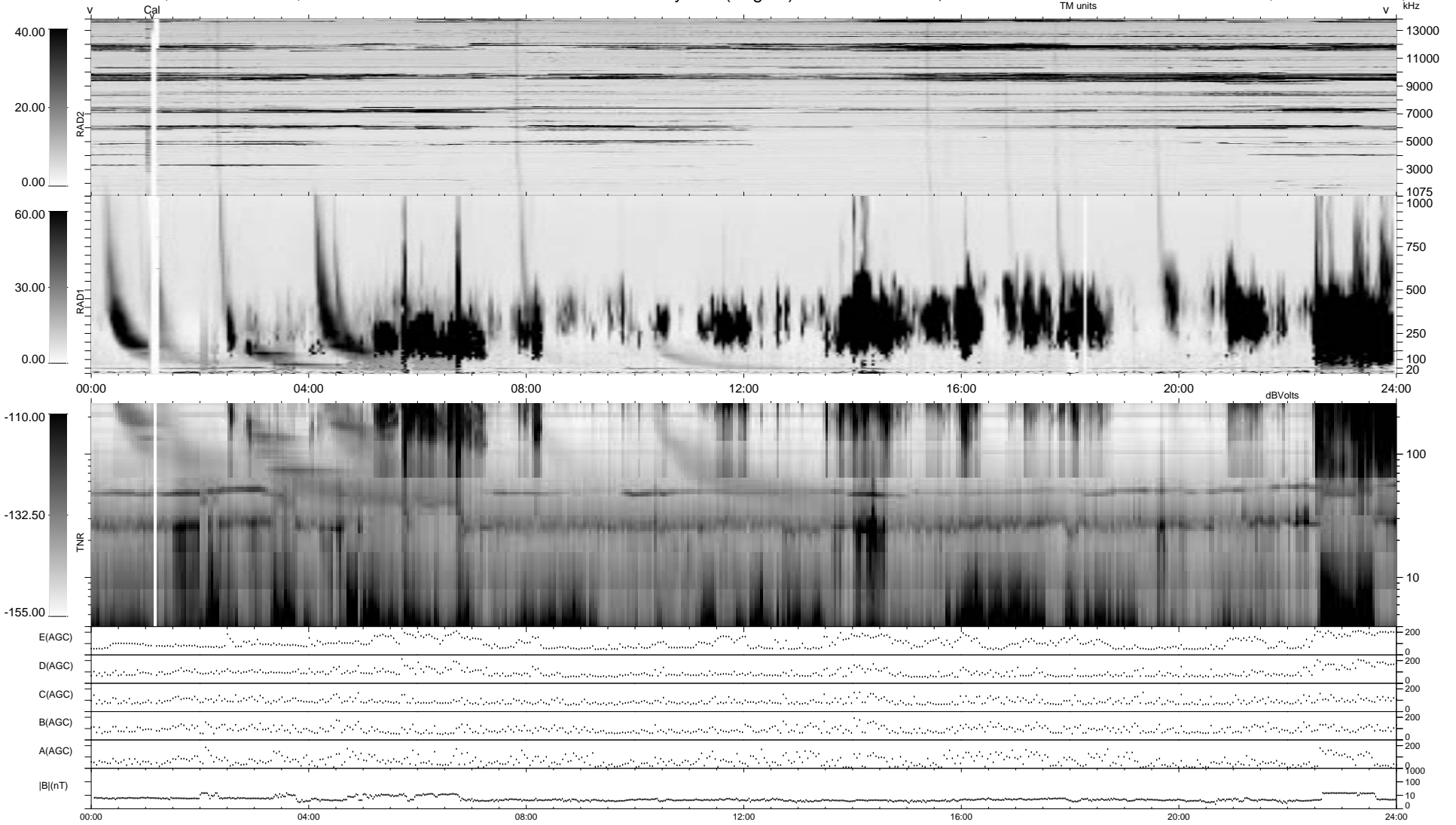


8 bad + 931 good MF/939MF projected (99%) - 0 missing MFs
 Avg interval = 180 secs
 Re = 48.29 (-26.41, -32.82, -23.61 GSE)

1.7d VMS-SunOS LZ version = v01
 DAILY Mon Sep 15, 2008
 Re = 33.77 (-12.62, -23.86, -20.29 GSE)

WIND/WAVES Summary Plot (Page 1) for 27-MAR-1999, DOY = 86



RAD2 Antenna Ey
 Mode LIN(1)
 SUM/SEP SEP
 Toggle OFF
 RAD1 Antenna Ex
 Mode LIS(2,3)
 SUM/SEP SUM
 Toggle OFF
 TNR Antenna ExEy
 Mode A-32
 Sweep ABCDE