

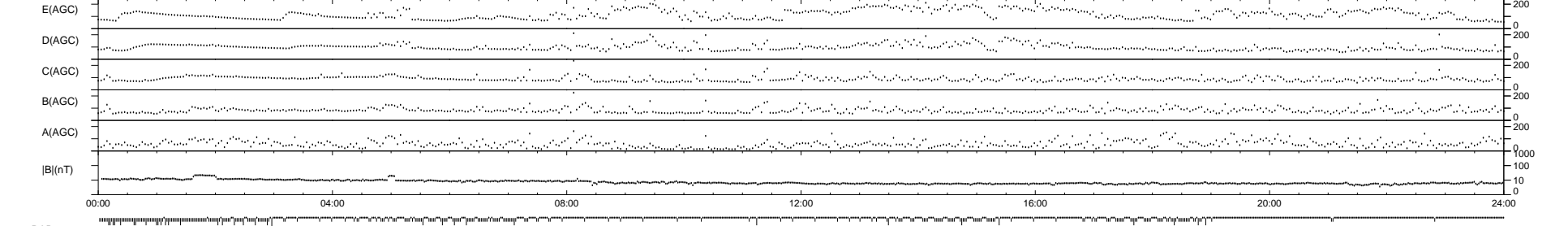
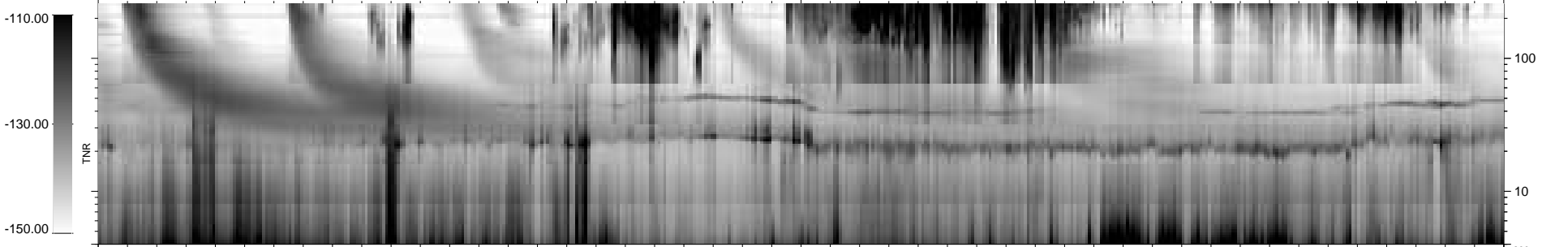
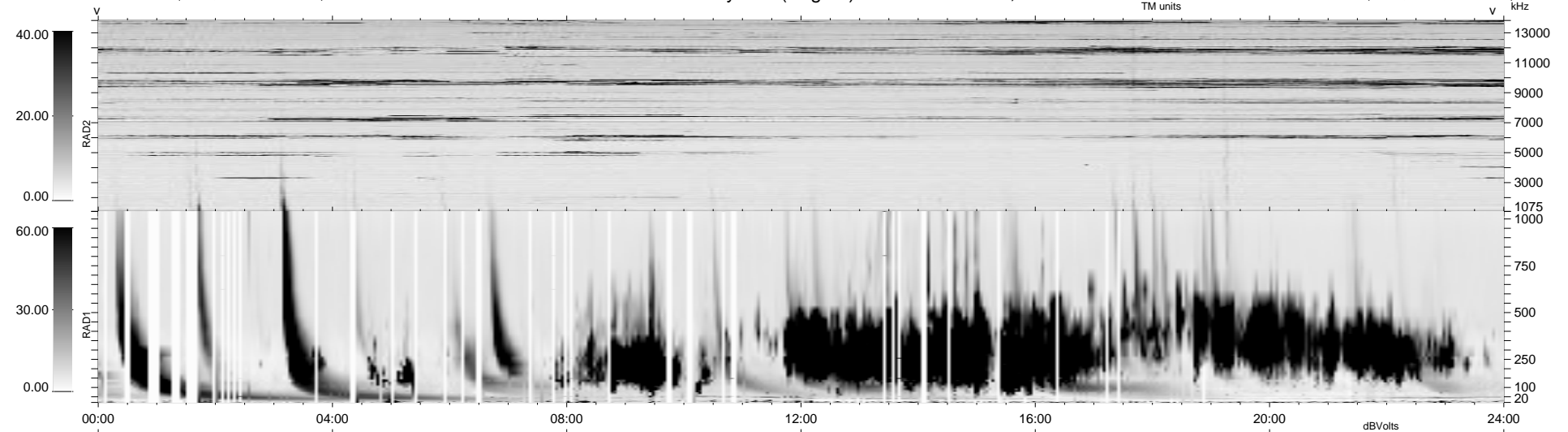
302 bad + 637 good MF/939MF projected (67%) - 0 missing MFs
Avg interval = 180 secs
Re = 59.08 (-37.32, -38.77, -24.37 GSE)

1.7d VMS-SunOS

LZ version = v01

WIND/WAVES Summary Plot (Page 1) for 26-MAR-1999, DOY = 85

DAILY Mon Sep 15, 2008
Re = 48.38 (-26.50, -32.87, -23.62 GSE)



RAD2
Antenna Ey
Mode LIN(1)
SUM/SEP SEP
Toggle OFF
RAD1
Antenna Ex
Mode LIS(2,3)
SUM/SEP SUM
Toggle OFF
TNR
Antenna ExEy
Mode A-32
Sweep ABCDE