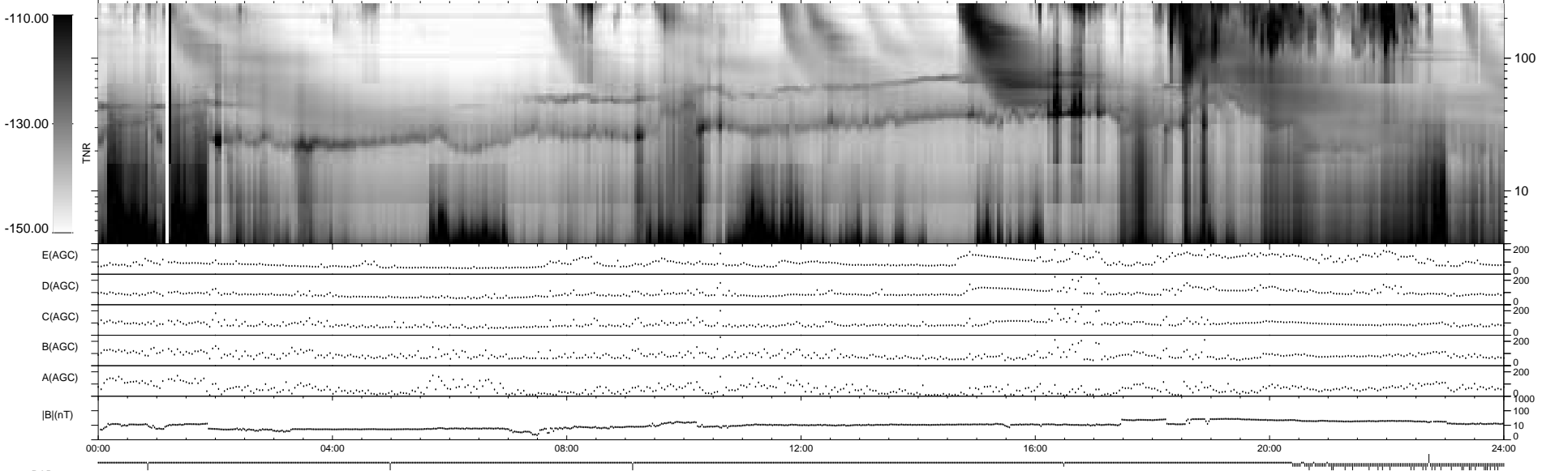
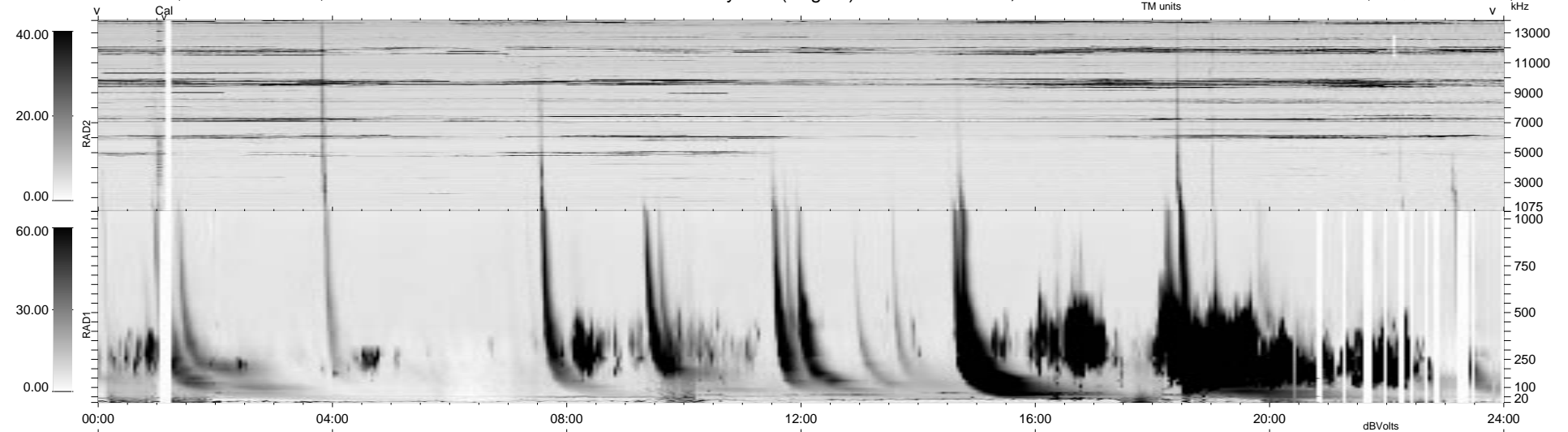


141 bad + 798 good MF/940MF projected (84%) - 1 missing MF
 Avg interval = 180 secs
 Re = 67.20 (-45.98, -42.88, -23.72 GSE)

1.7d VMS-SunOS LZ version = v02
 DAILY Mon Sep 15, 2008
 Re = 59.14 (-37.39, -38.81, -24.37 GSE)

WIND/WAVES Summary Plot (Page 1) for 25-MAR-1999, DOY = 84



RAD2
 Antenna Ey
 Mode LIN(1)
 SUM/SEP SEP
 Toggle OFF
 RAD1
 Antenna Ex
 Mode LIS(2,3)
 SUM/SEP SUM
 Toggle OFF
 TNR
 Antenna ExEy
 Mode A-32
 Sweep ABCDE