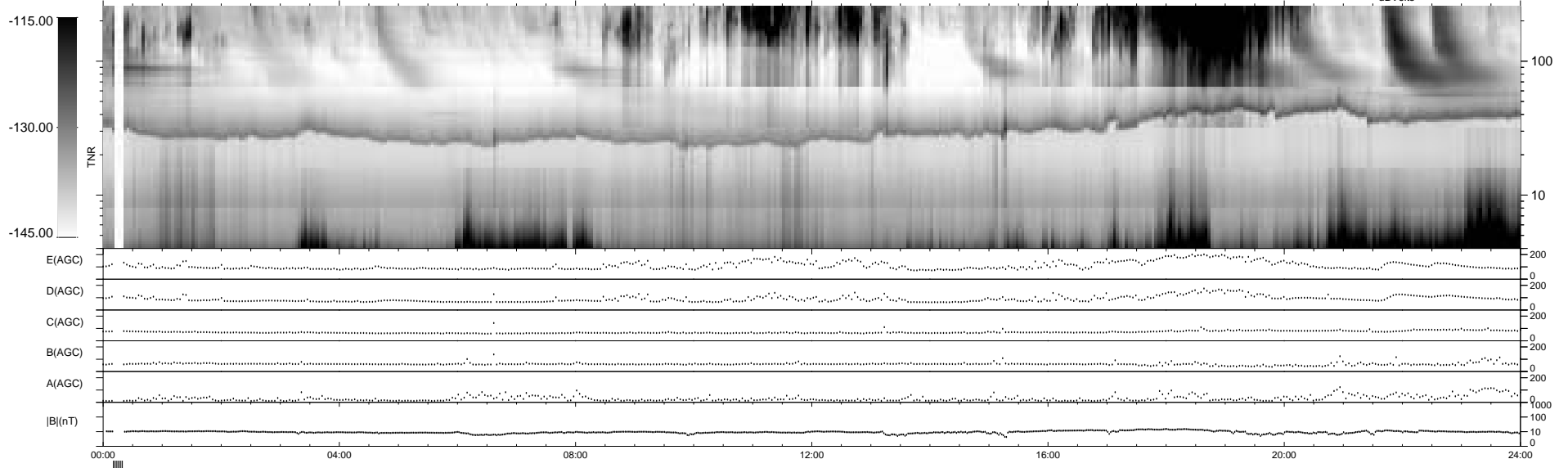
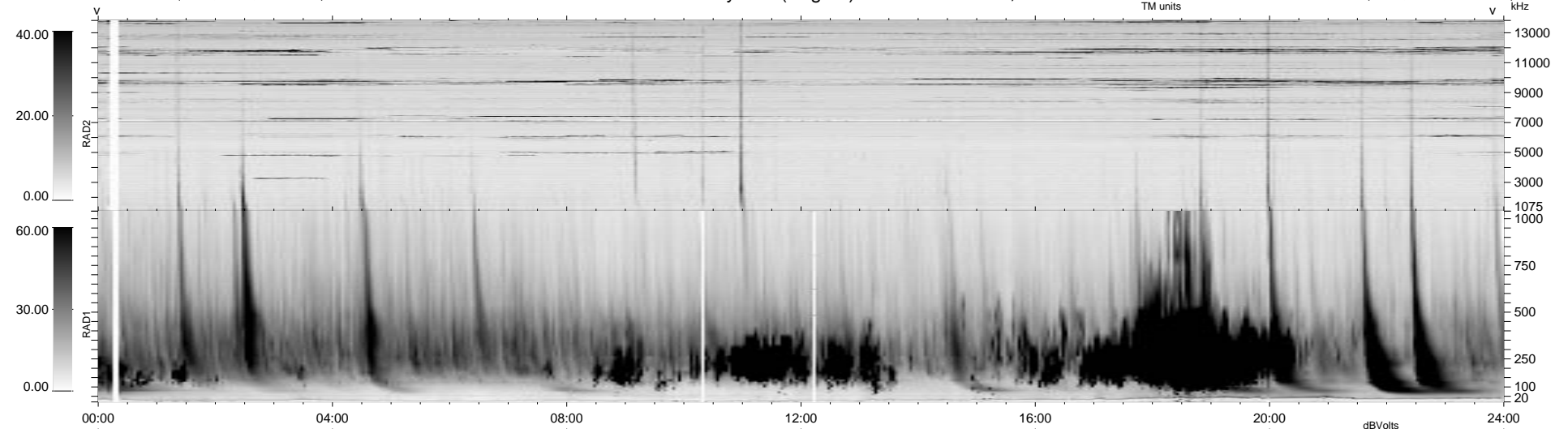


13 bad + 919 good MF/939MF projected (97%) - 7 missing MFs  
 Avg interval = 180 secs  
 Re = 81.15 (-65.62, -46.57, -10.53 GSE)

1.7d VMS-SunOS LZ version = v01  
 DAILY Mon Sep 15, 2008  
 Re = 81.36 (-64.38, -47.78, -13.84 GSE)

WIND/WAVES Summary Plot (Page 1) for 20-MAR-1999, DOY = 79



RAD2  
 Antenna Ey .....  
 Mode LIN(1) .....  
 SUM/SEP SEP .....  
 Toggle OFF .....  
 RAD1  
 Antenna Ex .....  
 Mode LIS(2,3) .....  
 SUM/SEP SUM .....  
 Toggle OFF .....  
 TNR  
 Antenna ExEy .....  
 Mode A-32 .....  
 Sweep ABCDE .....