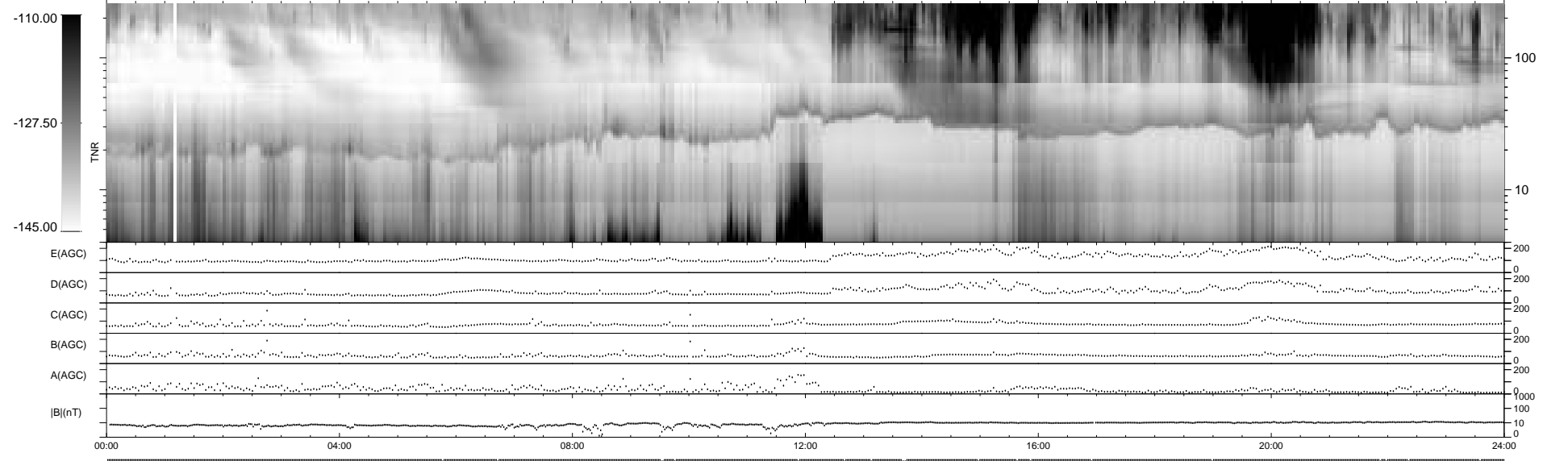
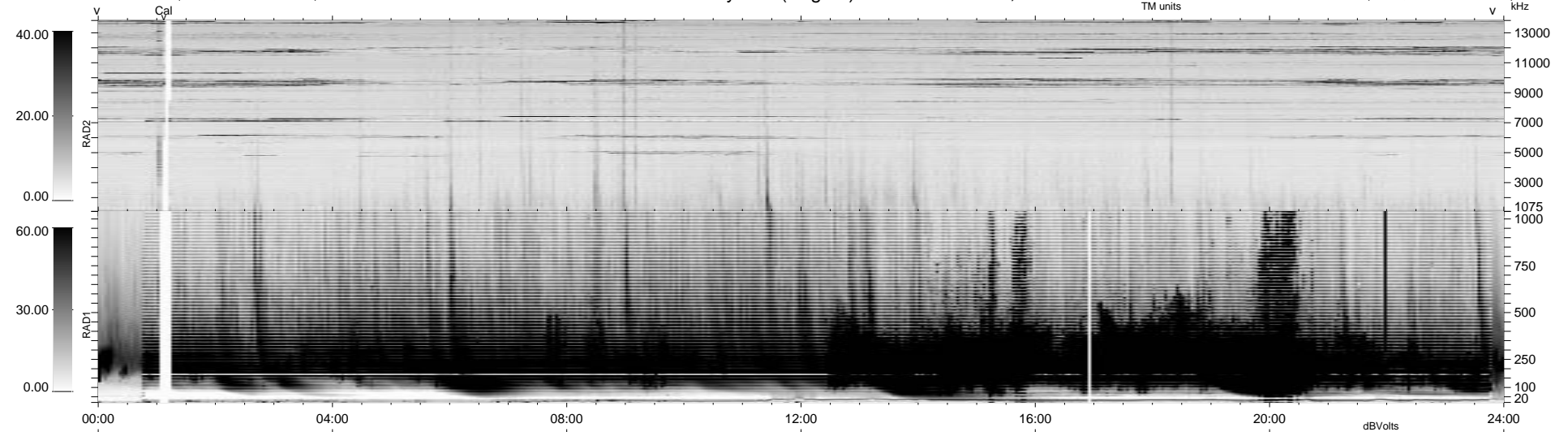


20 bad + 919 good MF/939MF projected (97%) - 0 missing MFs
 Avg interval = 180 secs
 Re = 79.52 (-65.60, -44.43, -6.85 GSE)

1.7d VMS-SunOS LZ version = v01
 DAILY Mon Sep 15, 2008
 Re = 81.14 (-65.62, -46.56, -10.51 GSE)

WIND/WAVES Summary Plot (Page 1) for 19-MAR-1999, DOY = 78



```

RAD2
Antenna Ey .....
Mode LIN(1) .....
SUM/SEP SEP .....
Toggle OFF .....

RAD1
Antenna Ex .....
Mode LIS(2,8) ..... LIS(2,8)
SUM/SEP SUM ..... SUM
Toggle OFF .....

TNR
Antenna ExEy .....
Mode A-32 .....
Sweep ABCDE .....
  
```