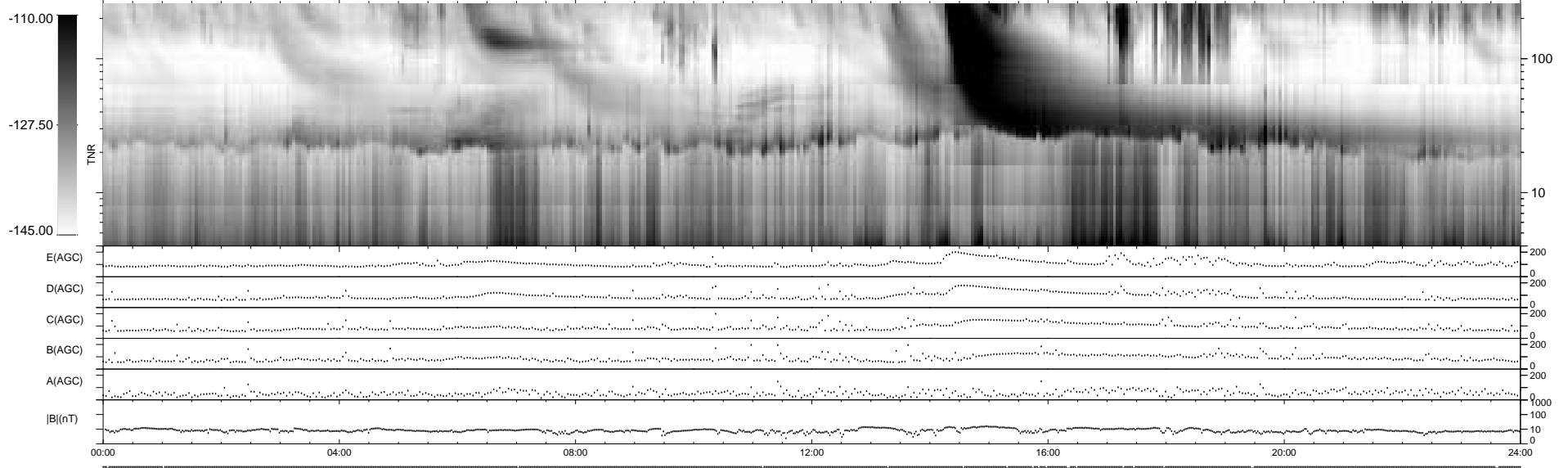
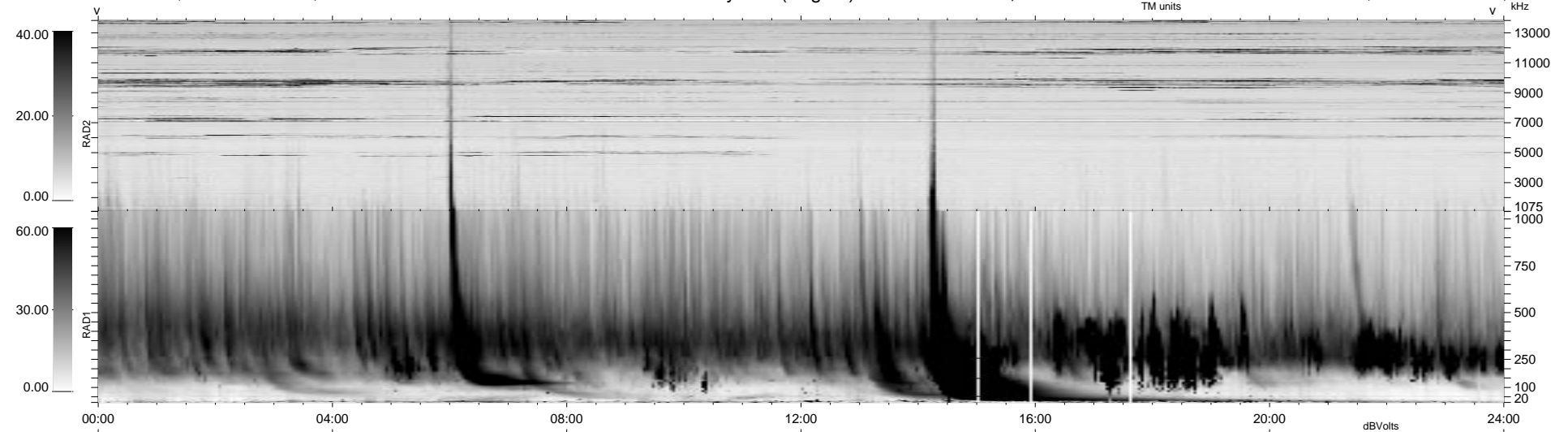


20 bad + 920 good MF/940MF projected (97%) - 0 missing MFs
 Avg interval = 180 secs
 Re = 76.43 (-64.26, -41.26, -3.00 GSE)

1.7d VMS-SunOS LZ version = v01
 DAILY Mon Sep 15, 2008
 Re = 79.51 (-65.59, -44.41, -6.82 GSE)

WIND/WAVES Summary Plot (Page 1) for 18-MAR-1999, DOY = 77



```

RAD2
Antenna Ey .....
Mode LIN(1) .....
SUM/SEP SEP .....
Toggle OFF .....

RAD1
Antenna Ex .....
Mode LIS(2,3) .....
SUM/SEP SUM .....
Toggle OFF .....

TNR
Antenna ExEy .....
Mode A-32 .....
Sweep ABCDE .....
  
```