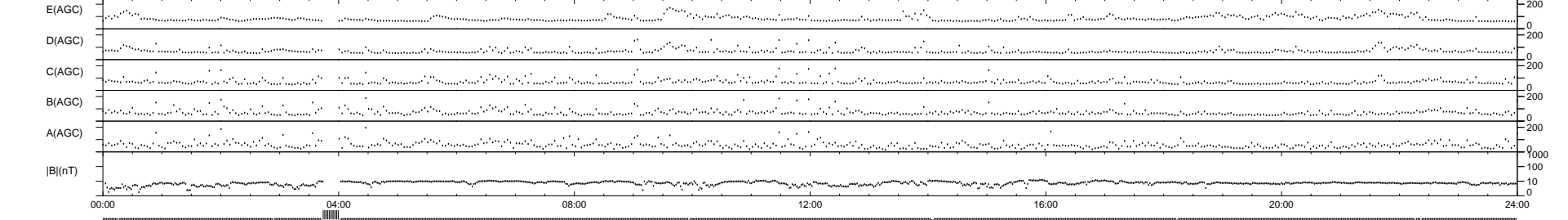
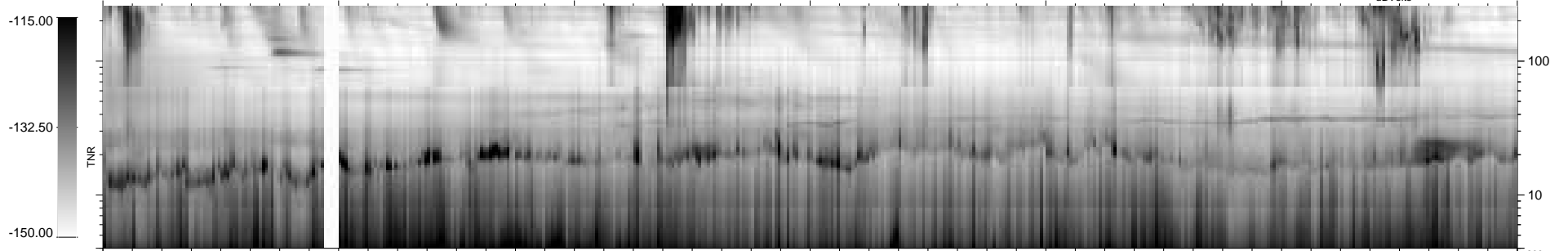
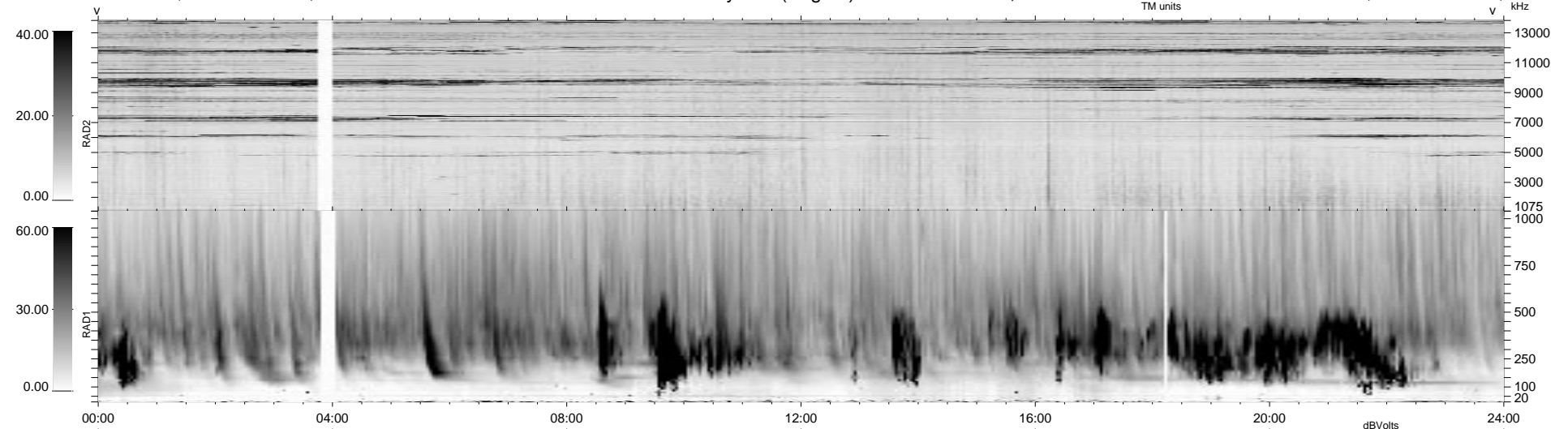


10 bad + 918 good MF/939MF projected (97%) - 11 missing MFs
 Avg interval = 180 secs
 Re = - 65.29 (-57.05, -31.37, 4.82 GSE)

1.7d VMS-SunOS LZ version = v01
 DAILY Mon Sep 15, 2008
 Re = 71.71 (-61.47, -36.92, 0.96 GSE)

WIND/WAVES Summary Plot (Page 1) for 16-MAR-1999, DOY = 75



RAD2
 Antenna Ey
 Mode LIN(1)
 SUM/SEP SEP
 Toggle OFF
 RAD1
 Antenna Ex
 Mode LIS(2,3)
 SUM/SEP SUM
 Toggle OFF
 TNR
 Antenna ExEy
 Mode A-32
 Sweep ABCDE