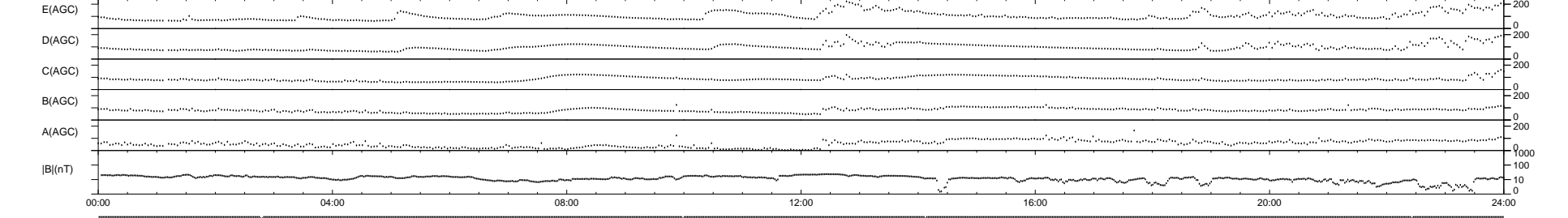
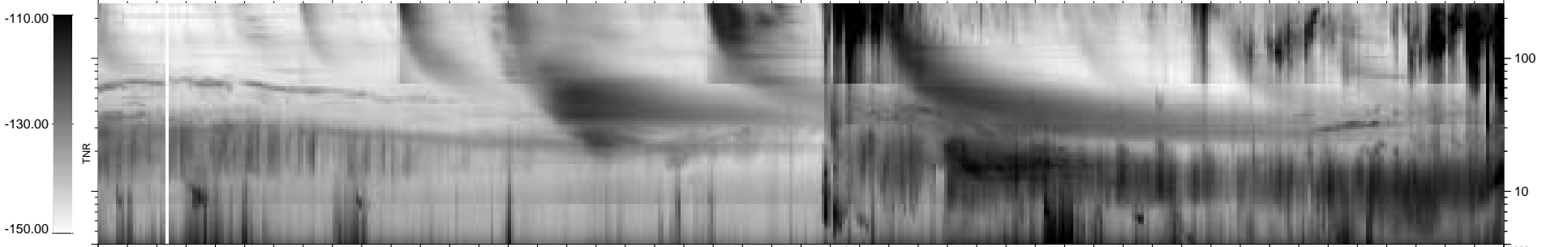
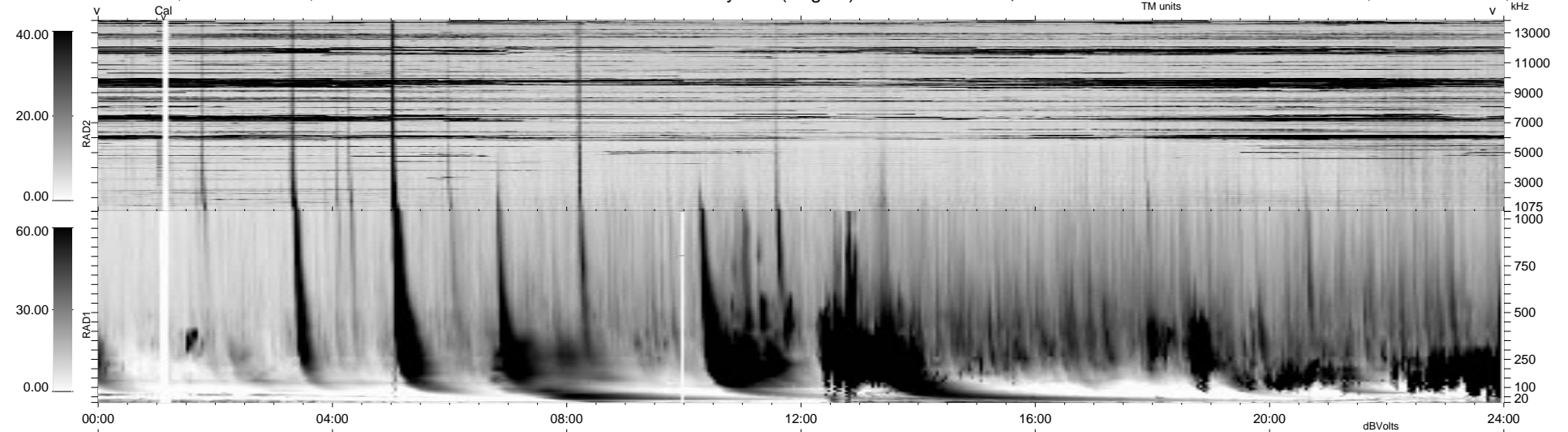


5 bad + 934 good MF/939MF projected (99%) - 0 missing MFs
 Avg interval = 180 secs
 Re = 30.00 (-26.69, -4.13, 13.07 GSE)

1.7d VMS-SunOS LZ version = v01
 DAILY Mon Sep 15, 2008
 Re = 45.28 (-41.01, -15.28, 11.62 GSE)

WIND/WAVES Summary Plot (Page 1) for 13-MAR-1999, DOY = 72



RAD2
 Antenna Ey
 Mode LIN(1)
 SUM/SEP SEP
 Toggle OFF
 RAD1
 Antenna Ex
 Mode LIS(2,3)
 SUM/SEP SUM
 Toggle OFF
 TNR
 Antenna ExEy
 Mode A-32
 Sweep ABCDE