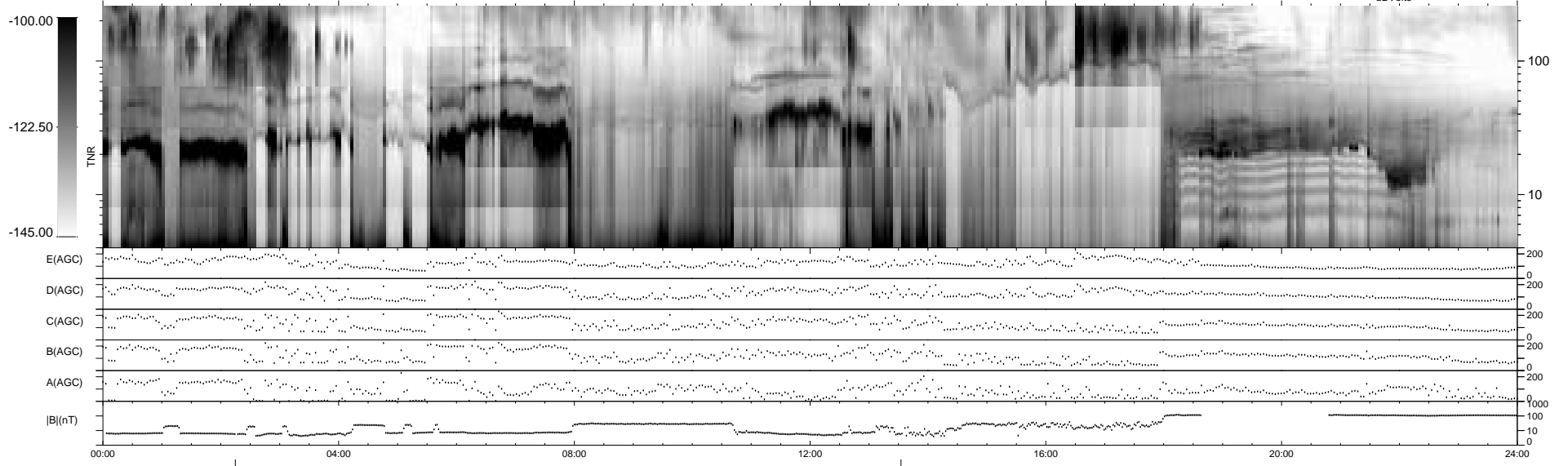
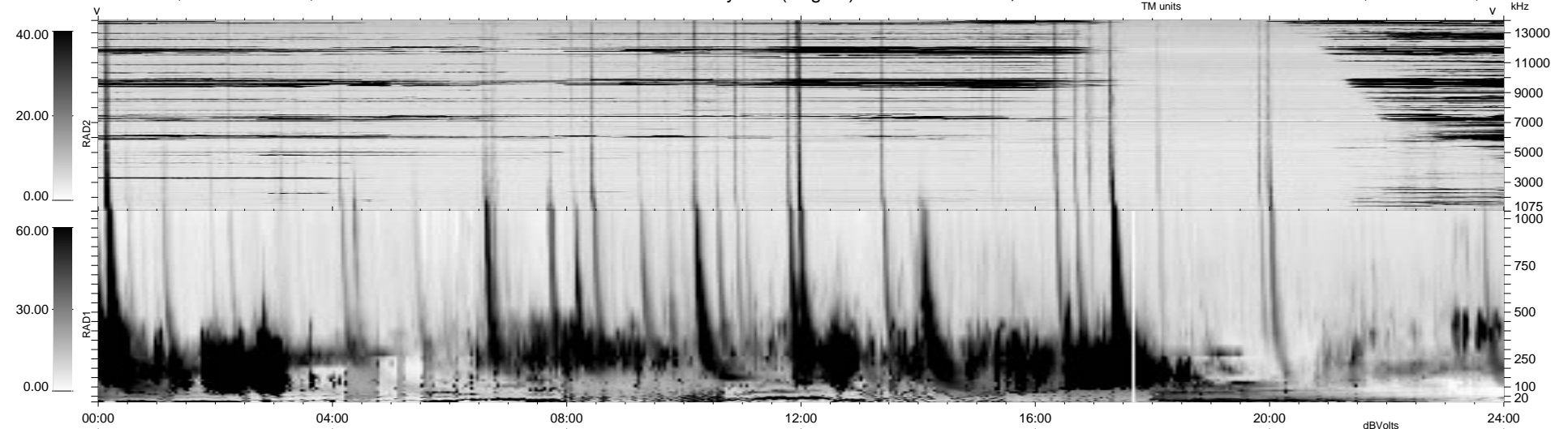


6 bad + 931 good MF/939MF projected (99%) - 2 missing MFs  
 Avg interval = 180 secs  
 Re = 25.63 (2.24, -18.88, -17.19 GSE)

1.7d VMS-SunOS LZ version = v01

### WIND/WAVES Summary Plot (Page 1) for 11-MAR-1999, DOY = 70

DAILY Mon Sep 15, 2008  
 Re = 8.32 (1.20, 6.66, 4.85 GSE)



RAD2  
 Antenna Ey .....  
 Mode LIN(1) .....  
 SUM/SEP SEP .....  
 Toggle OFF .....  
 RAD1  
 Antenna Ex .....  
 Mode LIS(2,3) .....  
 SUM/SEP SUM .....  
 Toggle OFF .....  
 TNR  
 Antenna ExEy .....  
 Mode A-32 .....  
 Sweep ABCDE .....