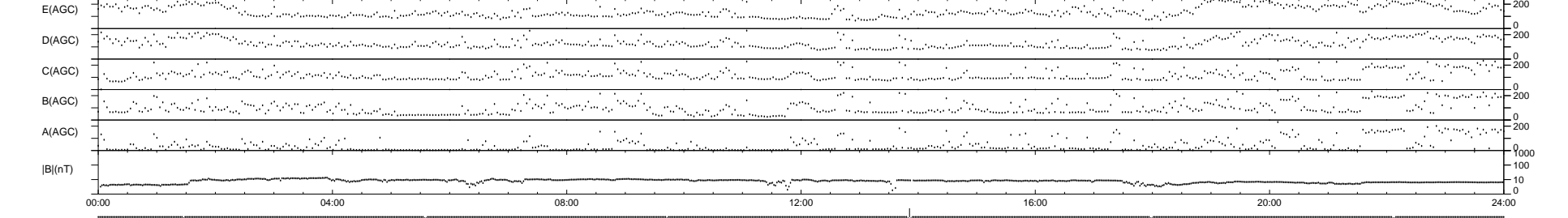
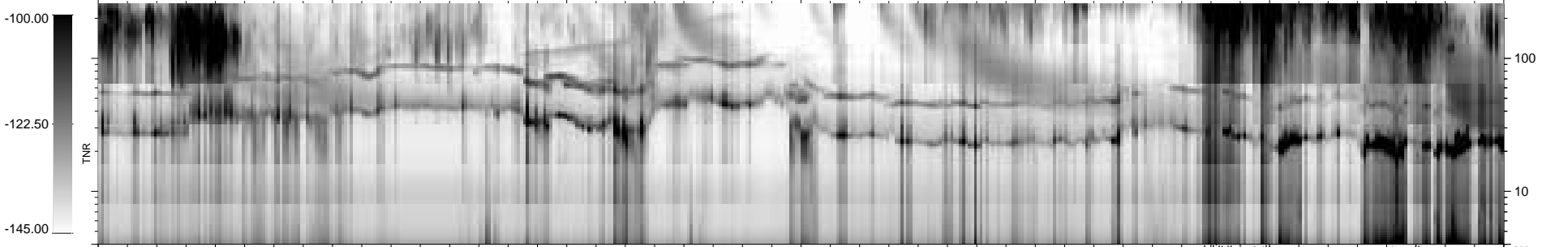
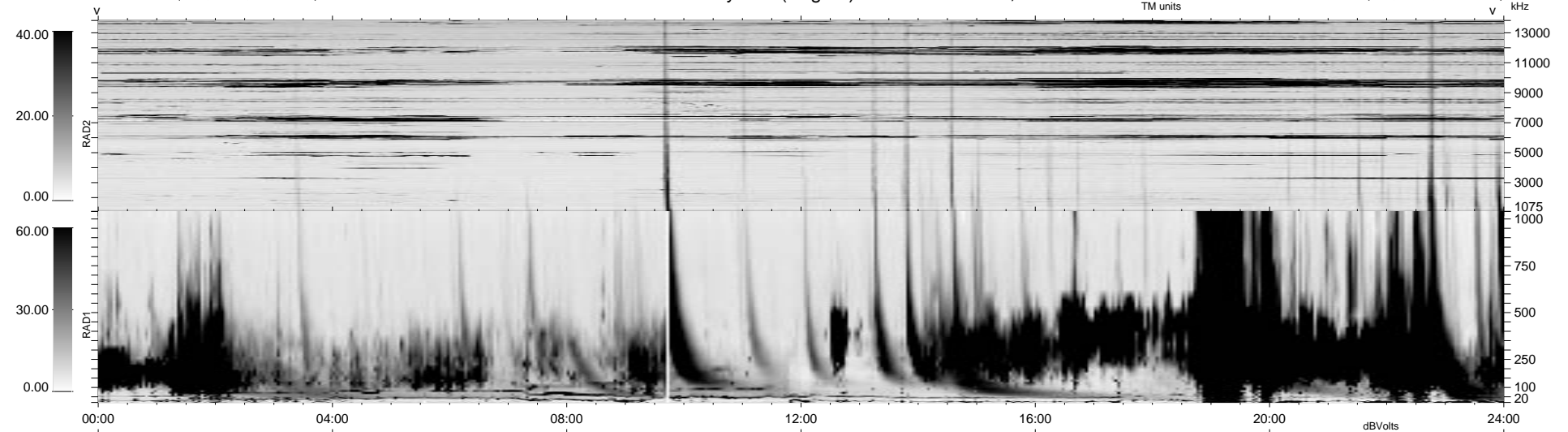


10 bad + 929 good MF/940MF projected (98%) - 1 missing MF  
 Avg interval = 180 secs  
 Re = - 42.36 (-8.92, -34.73, -22.55 GSE)

1.7d VMS-SunOS LZ version = v01

WIND/WAVES Summary Plot (Page 1) for 10-MAR-1999, DOY = 69

DAILY Mon Sep 15, 2008  
 Re = 25.77 (2.16, -19.02, -17.25 GSE)



RAD2  
 Antenna Ey .....  
 Mode LIN(1) .....  
 SUM/SEP SEP .....  
 Toggle OFF .....  
 RAD1  
 Antenna Ex .....  
 Mode LIS(2,3) .....  
 SUM/SEP SUM .....  
 Toggle OFF .....  
 TNR  
 Antenna ExEy .....  
 Mode A-32 .....  
 Sweep ABCDE .....