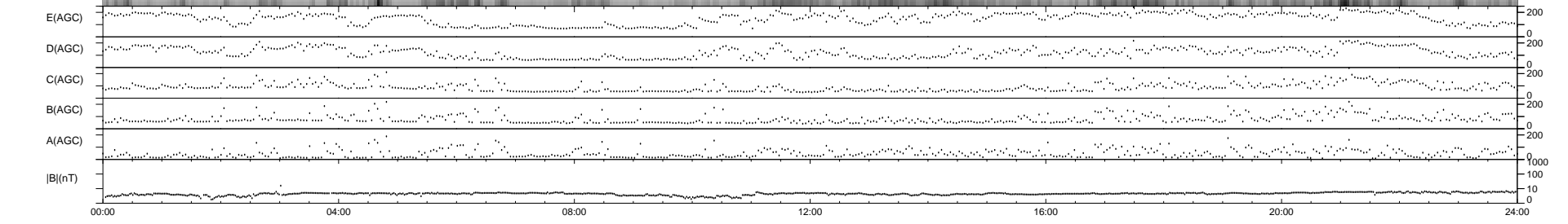
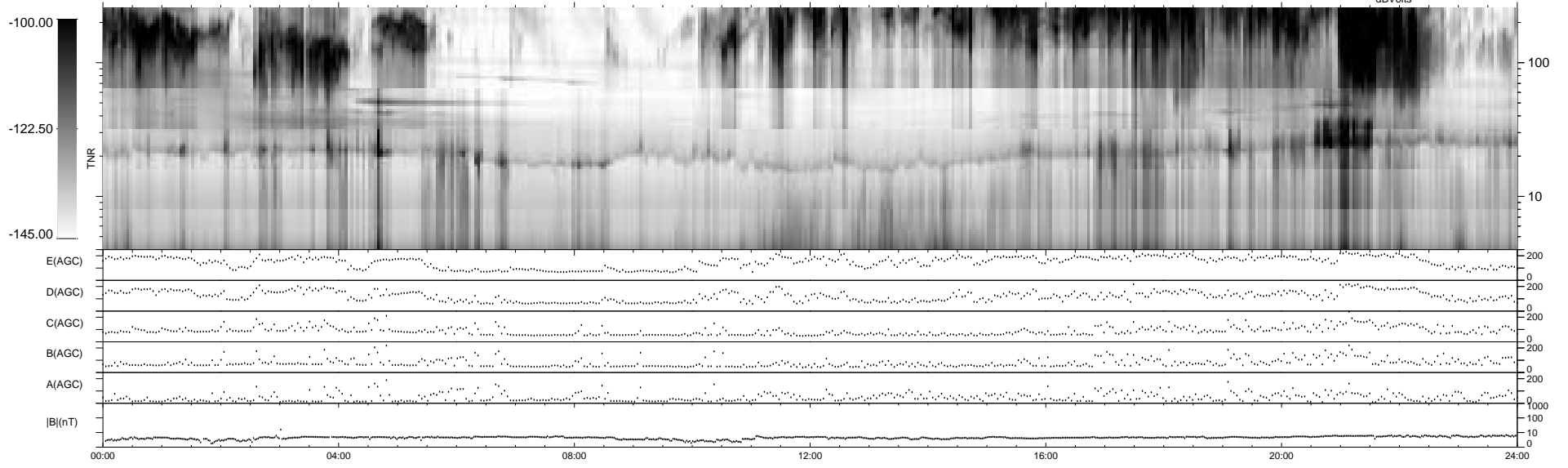
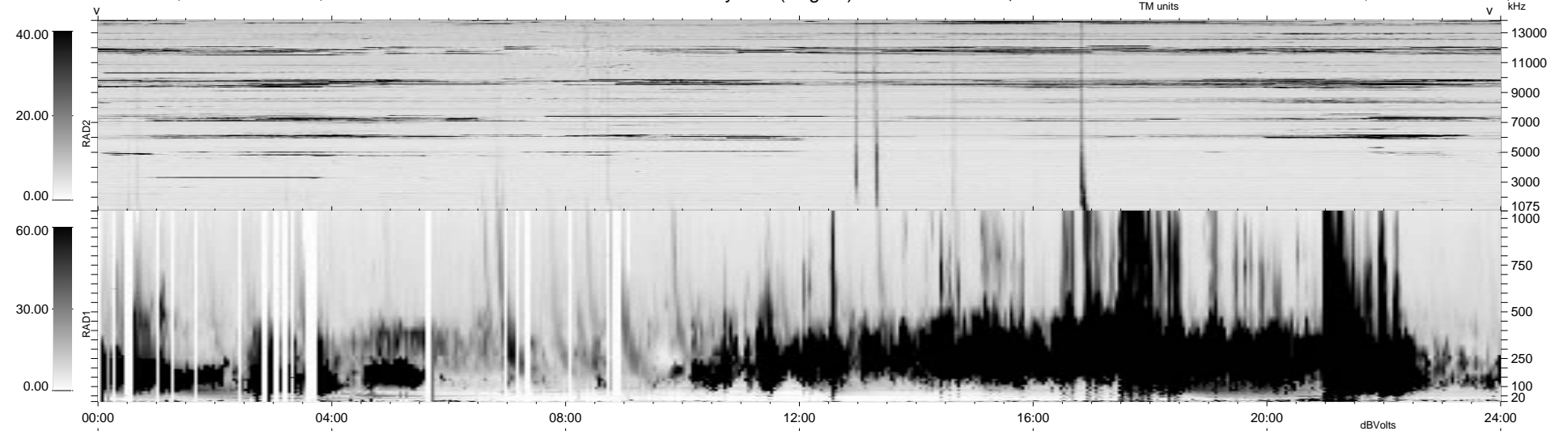


179 bad + 760 good MF/939MF projected (80%) - 0 missing MFs
 Avg interval = 180 secs
 Re = 63.72 (-26.32, -53.00, -23.62 GSE)

1.7d VMS-SunOS LZ version = v01
 DAILY Mon Sep 15, 2008
 Re = 54.61 (-18.49, -45.42, -24.04 GSE)

WIND/WAVES Summary Plot (Page 1) for 08-MAR-1999, DOY = 67



RAD2
 Antenna Ey
 Mode LIN(1)
 SUM/SEP SEP
 Toggle OFF
 RAD1
 Antenna
 Mode
 SUM/SEP
 Toggle
 TNR
 Antenna ExEy
 Mode A-32
 Sweep ABCDE