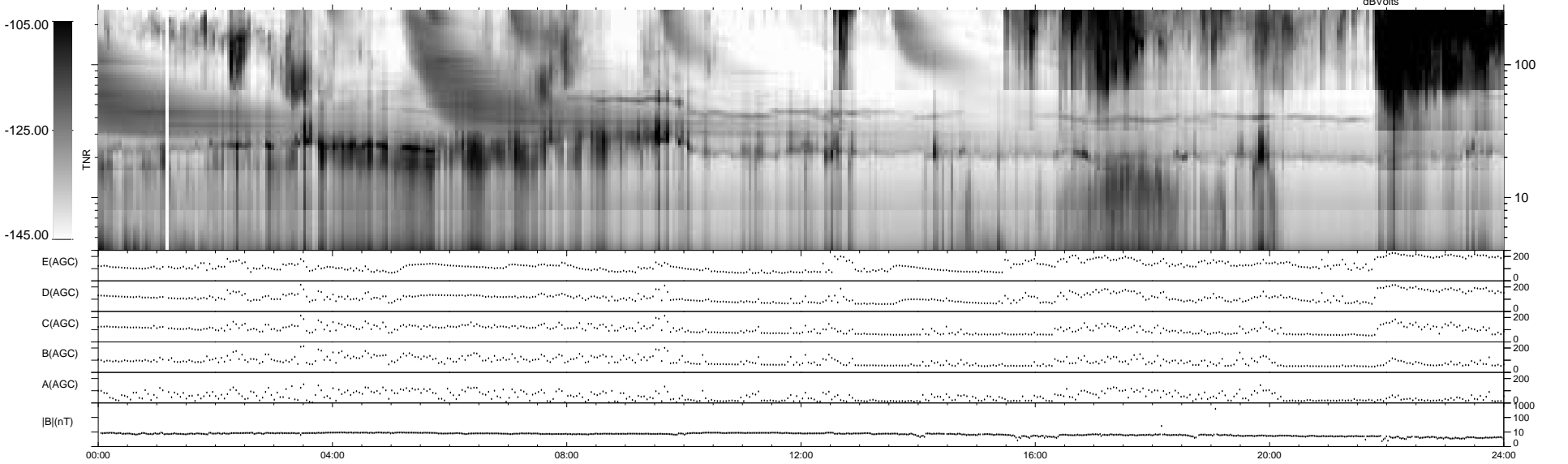
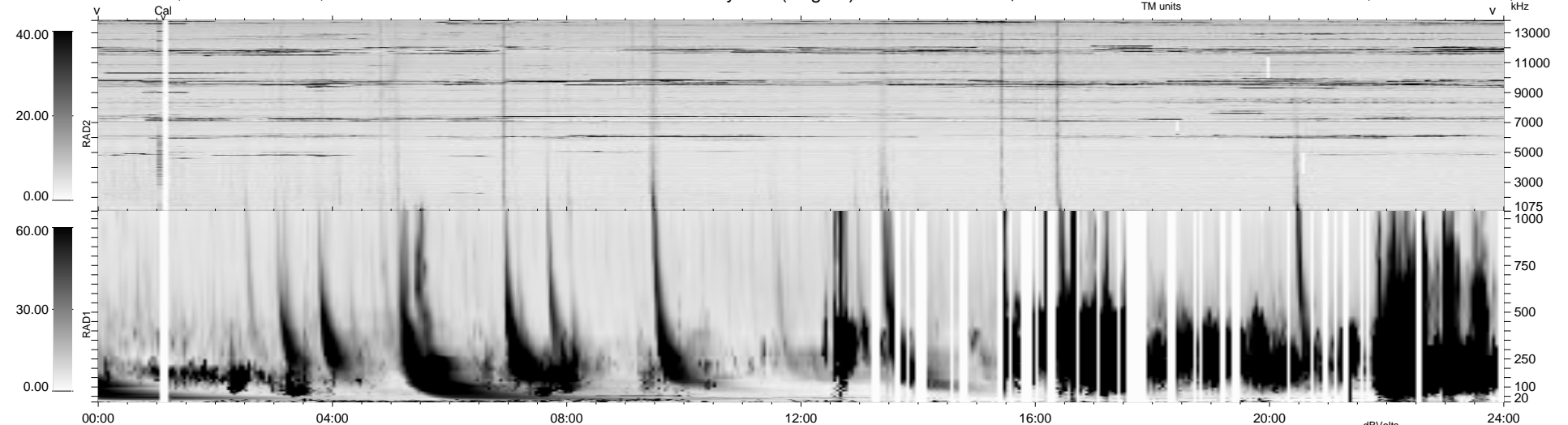


359 bad + 590 good MF/939MF projected (61%) - 0 missing MFs
 Avg interval = 180 secs
 Re = 70.60 (-32.83, -58.51, -21.98 GSE)

1.7d VMS-SunOS LZ version = v01
 DAILY Mon Sep 15, 2008
 Re = 63.78 (-26.37, -53.05, -23.62 GSE)

WIND/WAVES Summary Plot (Page 1) for 07-MAR-1999, DOY = 66



RAD2
 Antenna Ey
 Mode LIN(1)
 SUM/SEP SEP
 Toggle OFF
 RAD1
 Antenna Ex
 Mode LIS(2,3)
 SUM/SEP SUM
 Toggle OFF
 TNR
 Antenna ExEy
 Mode A-32
 Sweep ABCDE