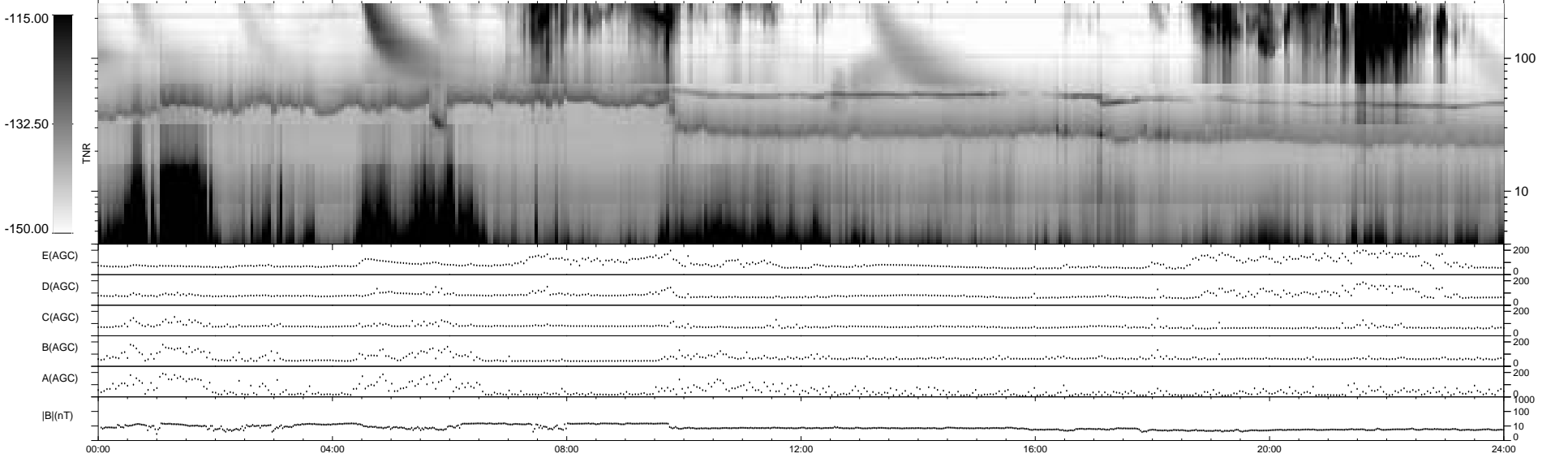
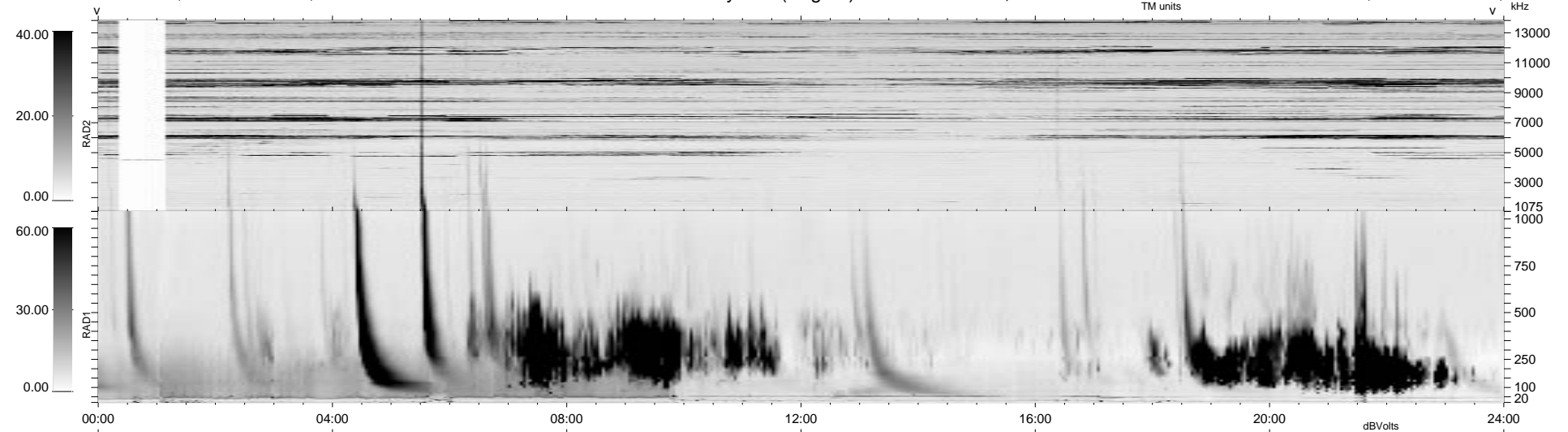


6 bad + 933 good MF/939MF projected (99%) - 0 missing MFs  
 Avg interval = 180 secs  
 Re = -66.09 (-46.27, -46.56, 7.71 GSE)

1.7d VMS-SunOS LZ version = v01

### WIND/WAVES Summary Plot (Page 1) for 27-FEB-1999, DOY = 58

DAILY Mon Sep 15, 2008  
 Re = 72.12 (-48.41, -53.33, 3.65 GSE)



```

RAD2
Antenna Ey .....
Mode LIN(1) FIX(69) LIN(1) .....
SUM/SEP SEP .....
Toggle OFF .....

RAD1
Antenna Ex .....
Mode LIS(2,3) .....
SUM/SEP SUM .....
Toggle OFF .....

TNR
Antenna ExEy .....
Mode A-32 .....
Sweep ABCDE .....
  
```